

## Old Ford Road, E3

£473 Per week

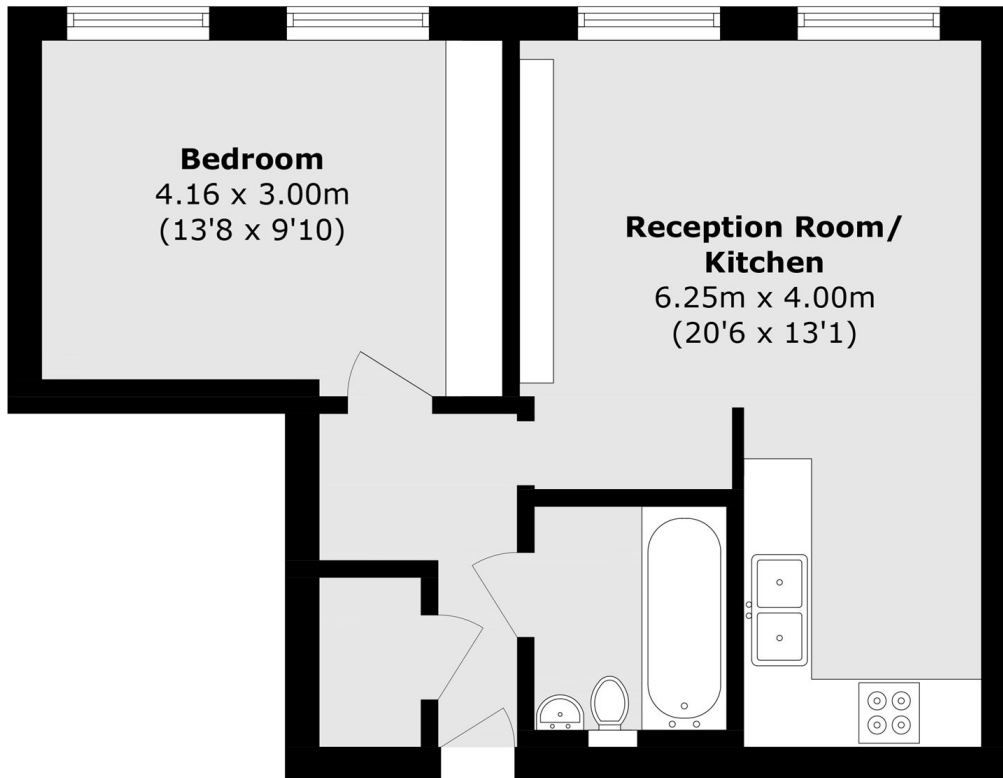
A stunning one double bedroom converted warehouse apartment in the Connaught Works. This property first floor apartment has exposed brickwork throughout, open plan living space with high ceilings which comes furnished.

Amazing location close to Victoria Park, Hertford Union Canal, Victoria Park Village and Roman Road for all local shops, bars and restaurants.

### Features

- One Double Bedroom
- Open Plan
- Warehouse Conversion
- Wood Floors
- High Ceilings
- Opposite Victoria Park

Old Ford Road,  
London, E3



Total area (approx.): 43.9 sq. m (472.5 sq. ft)