

Lankaster Gardens, N2

£1,950 Per calendar month

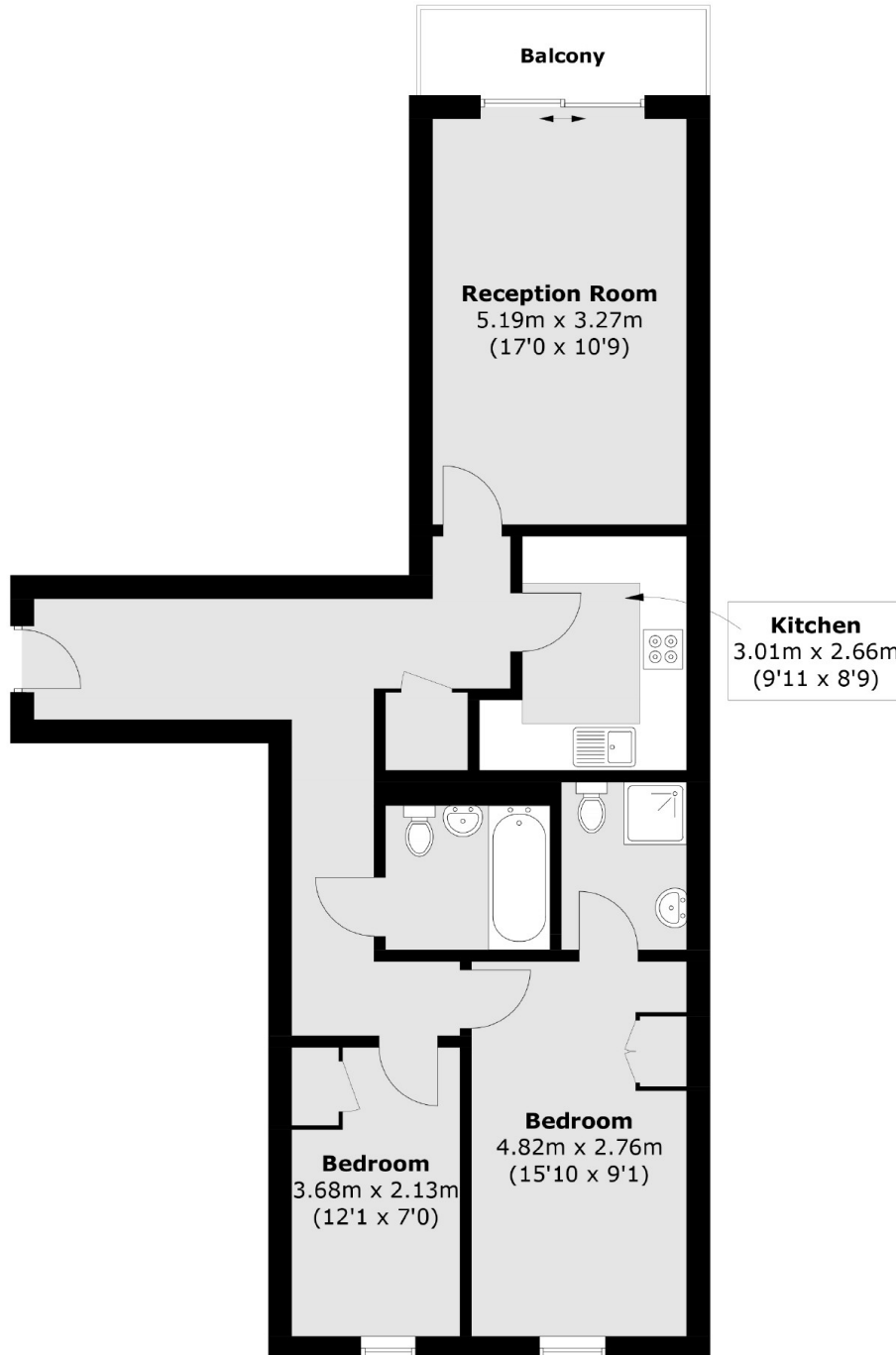
This first floor two double bedroom property set within this modern development in East Finchley. The property offers a bright open plan living room, two double bedrooms, two bathrooms, off street parking and communal gardens.

Witcomb Lodge is a private gated development with communal gardens. Located directly near Finchley Lido Leisure Centre, Cinema and Hollywood Bowl.

Features

- Two Double Bedrooms
- Secure development
- Modern Development
- Separate Plan Kitchen
- Two Bathrooms
- First Floor
- Off Street Underground Parking
- Communal Garden
- East Finchley

Lankaster Gardens, London, N2



Total area (approx.): 73.3 sq. m (789.0 sq. ft)
Balcony area: 4.0 sq. m (43.0 sq. ft)