



PERFECT PILLARS  
Supporting You



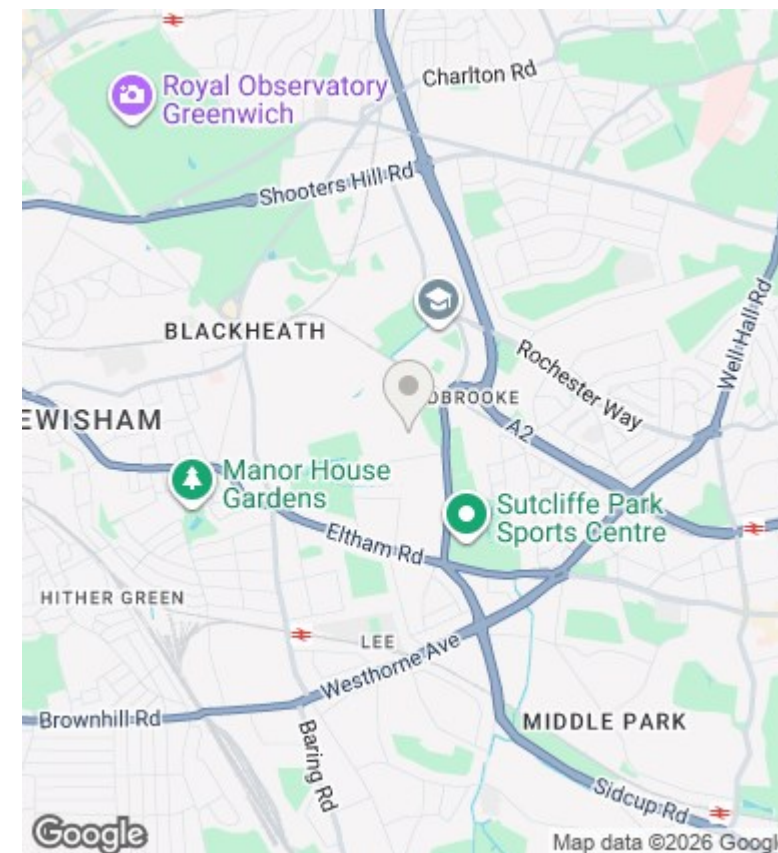
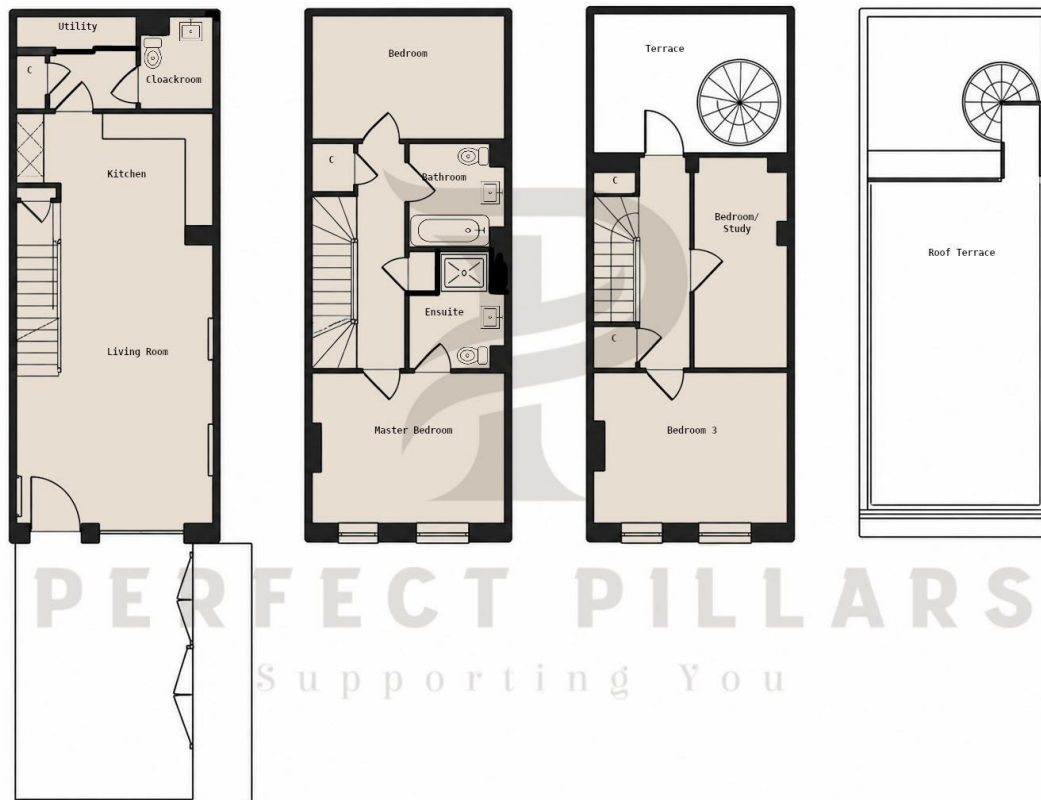
## 12 Baldwin Lane, London, SE3 9AY

Asking price £925,000

- Four-bedroom freehold townhouse in Kidbrooke Village
- Two bathrooms plus ground floor cloakroom/WC
- Private terrace and generous roof terrace
- Close to Kidbrooke Station, Pegler Square, Cator Park, Sutcliffe Park, Blackheath and Greenwich
- Arranged across multiple floors
- Principal bedroom with en suite shower room
- Private driveway parking
- Bright open-plan living/dining room with modern kitchen
- Fourth bedroom suitable as study/home office
- EPC rating B

400 Thames Valley Park Drive, Reading, Berkshire, RG6 1PT  
01183 048821

info@perfectpillars.co.uk  
<https://www.perfectpillars.co.uk/>



## Directions

## Viewings

Viewings by arrangement only. Call 01183 048821 to make an appointment.

## Council Tax Band

F

## EPC Rating:

B

Energy Efficiency Rating		Current	Potential
<i>Very energy efficient - lower running costs</i>			
(92 plus) <b>A</b>			<b>96</b>
(81-91) <b>B</b>		<b>88</b>	
(69-80) <b>C</b>			
(55-68) <b>D</b>			
(39-54) <b>E</b>			
(21-38) <b>F</b>			
(1-20) <b>G</b>			
<i>Not energy efficient - higher running costs</i>			
<b>England &amp; Wales</b>		EU Directive 2002/91/EC	