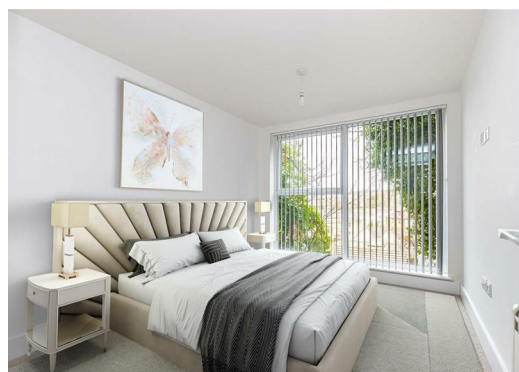




STRATTON OAK ESTATES

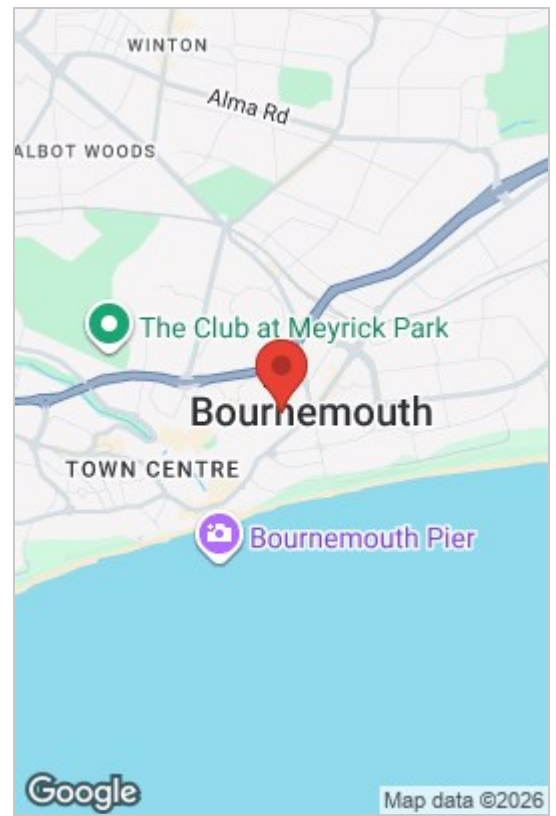


 1  1  1  C

2 Wootton Mount, Bournemouth, BH1 1AY

£1,100

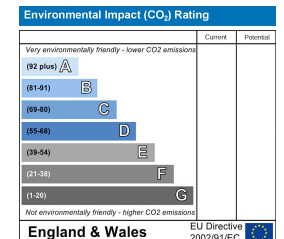
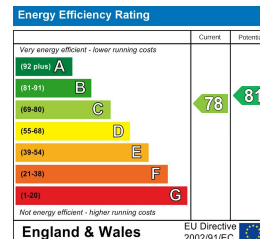
GREEN PARK GARDENS EXETER PARK ROAD, DORSET, BOURNEMOUTH, BH2 5BD
INFO@STRATTONOAKESTATES.COM | T. 01202 237580 | WWW.STRATTONOAKESTATES.COM



- Modern apartment in the heart of Bournemouth, just a short walk from the town centre and beaches.
- Bright open-plan living space with floor-to-ceiling sliding doors.
- Stylish fitted kitchen with integrated appliances including slimline dishwasher.
- Contemporary bathroom with shower over bath and heated towel rail.
- Positioned on the second floor with both lift and stair access.
- Good sized private balcony.
- Generous double bedroom with fitted wardrobes.
- Allocated parking space with permit included.



This IMMACULATELY PRESENTED apartment is ideally located in the centre of Bournemouth and offers a bright OPEN-PLAN LIVING AREA with a stylish kitchen, integrated appliances and a lounge with sliding doors opening onto a private balcony.



Whilst these details are thought to be correct, their accuracy cannot be guaranteed and do not form part of any contract. It should be noted that we have not tested any fixtures, fittings, equipment, apparatus or services, therefore we cannot verify that they are in working order or fit for purpose. Solicitors should be used to confirm that any moveable items described within these details are in fact part of the sale agreement. While we try to ensure measurements are correct they are not guaranteed and purchasers are advised to take their own measurements before ordering any fixtures or fittings.