



BAGSHAW BUILDING, E14

£1,100,000

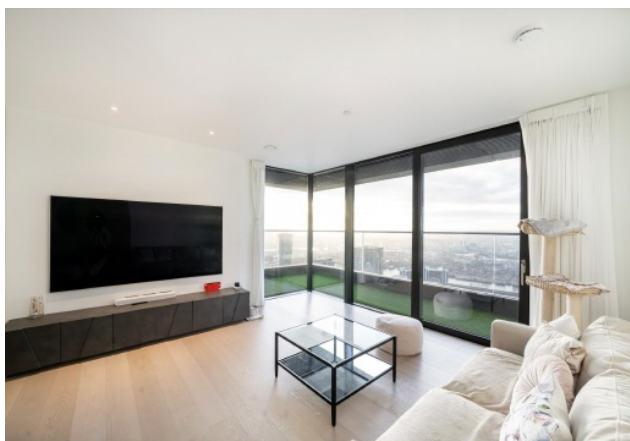
Spacious two-bedroom flat in the iconic Wardian, E14, featuring open-plan living, high-quality finishes, luxury resident amenities, and stunning views across Canary Wharf and the river from a private south-facing balcony.

- Two Bedrooms
- 24 Hour Concierge
- Gym
- Lease Length 990 Years
- Ground Rent £750
- Service Charge £9,839

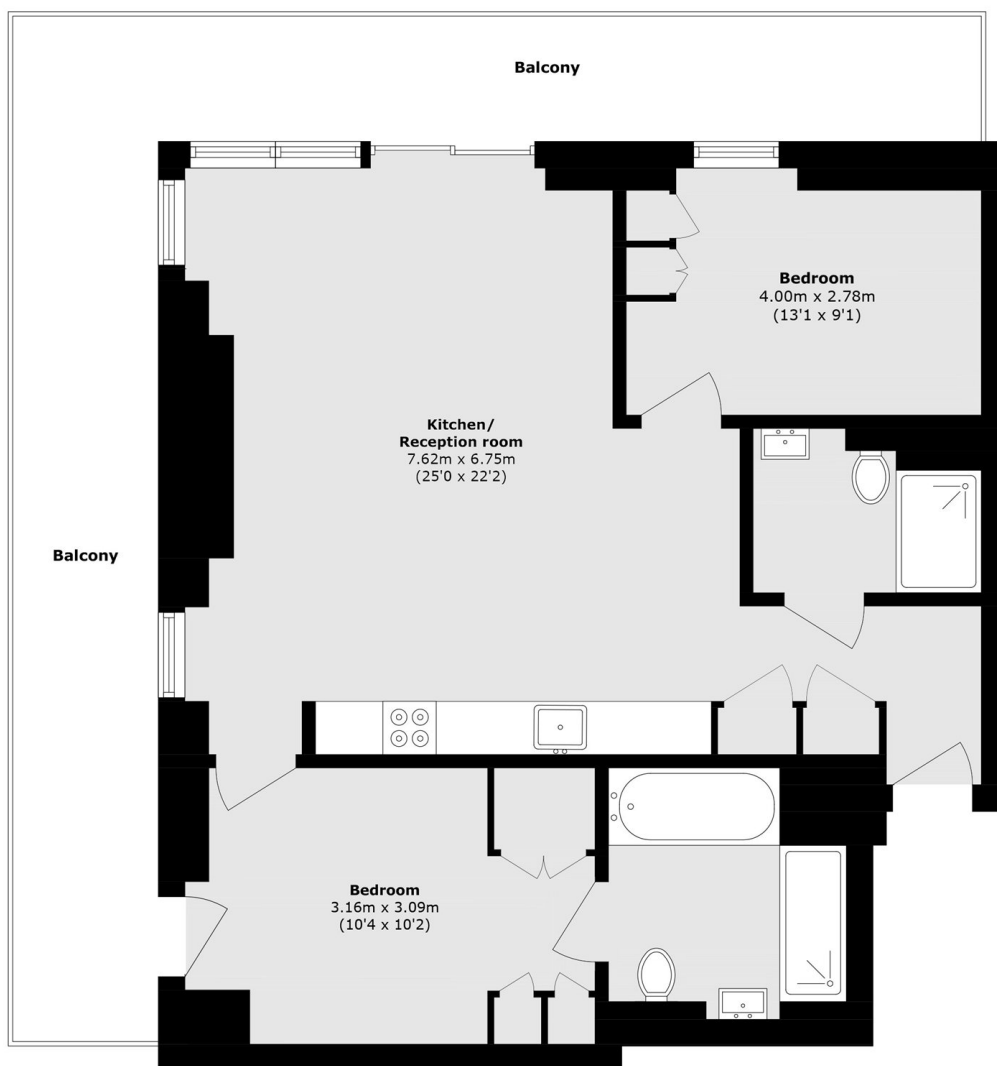


ABOUT THE HOME

Excellent transport links with Canary Wharf Underground (Jubilee line), DLR, and Elizabeth line all within walking distance. Quick connections to the City, West End, Heathrow, and major business districts.







Total area (approx.): 83.3 sq. m (896.6 sq. ft)
Balcony area (approx.): 31.9 sq. m (343.3 sq. ft)

LiFE RESIDENTIAL

36 Millharbour, London, E14

9JS

Sales: 020 3668 1033

Lettings: 020 3668 1030

Energy Rating: . We aim to make our particulars both accurate and reliable. However they are not guaranteed; nor do they form part of an offer or contract. If you require clarification on any points then please contact us, especially if you're traveling some distance to view. Please note that appliances and heating systems have not been tested and therefore no warranties can be given as to their good working order.