

Cricklewood Broadway, NW2

£692 Per week

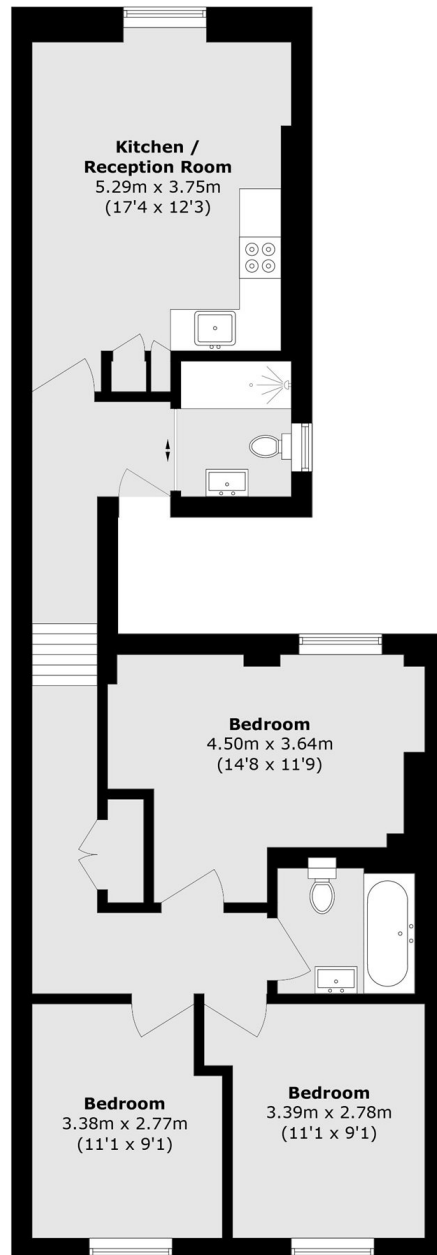
This newly refurbished three bedroom two bathroom first floor apartment is well situated with easy access to West Hampstead and Kilburn. The property has a spacious open plan living area with a modern integrated kitchen, wood flooring in parts and bright and spacious throughout.

Cricklewood Broadway is conveniently situated with many local amenities, shops and restaurants on the high street. There are multiple bus routes leading into Central London and Kilburn station, Brondesbury overground and Cricklewood Thameslink are also nearby.

Features

- Three Bedroom
- Two Bathrooms
- Open Plan
- Integrated Kitchen
- Newly Refurbished
- Ideally Situated

Cricklewood Broadway, London, NW2



Total area (approx.): 75.6 sq. m (813.8 sq. ft)