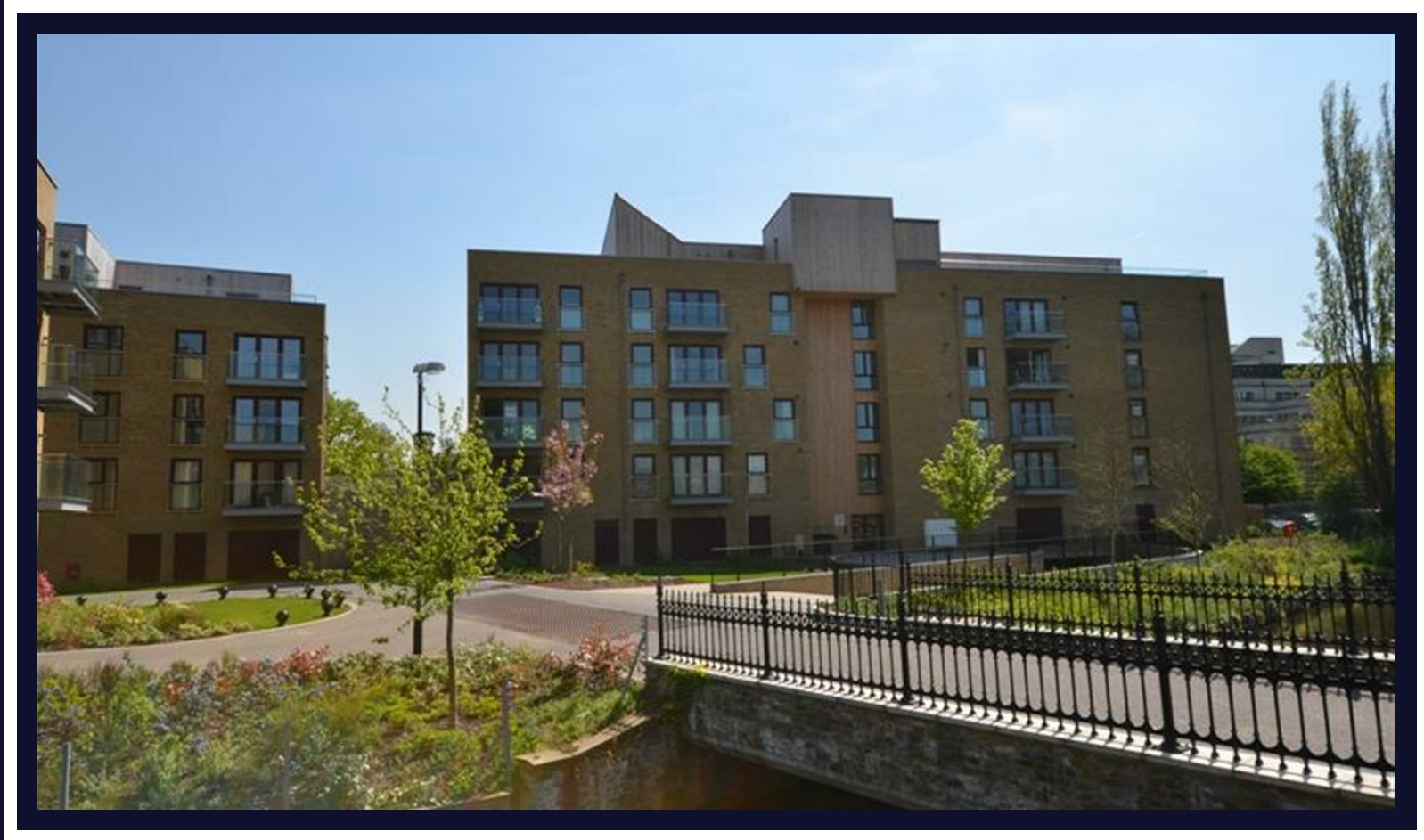


Kings Mill Way

Uxbridge • Middlesex • UB9 4BT

PCM: £1,850 PCM



coopers
est 1986



A truly stunning two bedroom, two bathroom executive apartment in the Kings Island development within walking distance of Uxbridge Town Centre, Uxbridge Business Park and close to the A40/M40/M25.

This superb and luxury apartment offers spacious living for the professional and comprises of two double bedrooms with views over the Grand Union Canal, spacious lounge leading to balcony, modern fitted kitchen with appliances, bathroom, ensuite to master bedroom.

Benefits; Double glazing, gas central heating, concierge and allocated parking. Furnished.

Furnished

Allocated Parking

Walking Distance to Uxbridge High Street

Local amenities

Two double bedrooms

Stunning views

Close to Brunel University

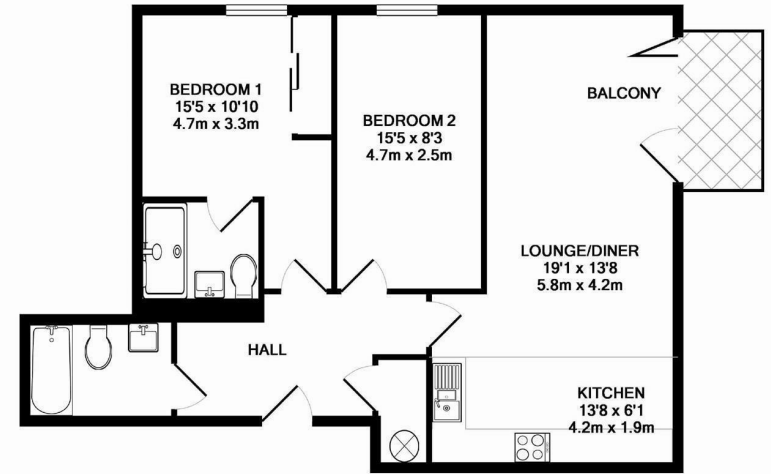
Close to ACS

Close to M40

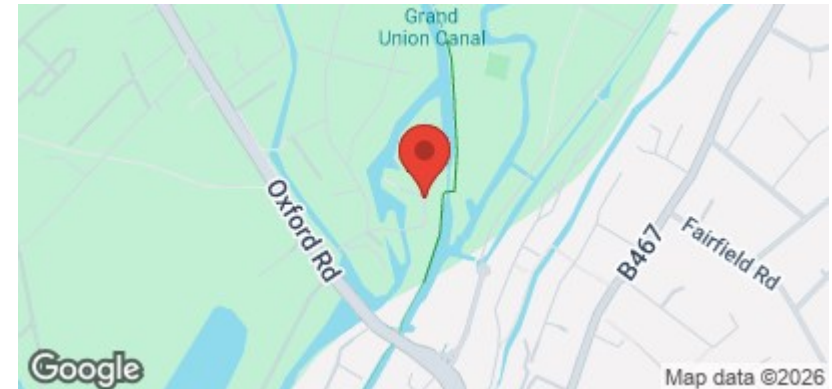
Council Tax Band C

Available Date

27th May 2026



TOTAL APPROX. FLOOR AREA 742 SQ.FT. (68.9 SQ.M.)
 Whilst every attempt has been made to ensure the accuracy of the floor plan contained here, measurements of doors, windows, rooms and any other items are approximate and no responsibility is taken for any error, omission, or mis-statement. This plan is for illustrative purposes only and should be used as such by any prospective purchaser. The services, systems and appliances shown have not been tested and no guarantee as to their operability or efficiency can be given
 Made with Metropix ©2014



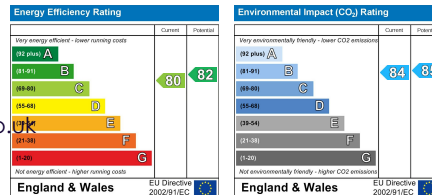
coopers
est 1986

01895 230 103

**109 Hillingdon Hill, Hillingdon Village,
Middlesex, UB10 0JQ**

propertymanagement@coopersresidential.co.uk

CoopersResidential.co.uk



Important Notice: These particulars, whilst believed to be accurate are set out as a general outline only for guidance and do not constitute any part of an offer or contract. Intending purchasers should not rely on them as statements or representation of fact, but must satisfy themselves by inspection or otherwise has the authority to make or give any representation or warranty in respect of the property.