



Hardy Road, SW19
£1,075,000

Dexters



Hardy Road, SW19

A three double bedroom Victorian house, extended to the rear and loft. The house is flooded with light, and is located in the renowned 'Battles' roads, with a landscaped west facing garden.

The ground floor has a large through reception room, complete with a period fireplace, shutters, bespoke, hand built alcove units and engineered wood flooring. The kitchen is open plan, with a breakfast/ dining room and bifolding doors to the exceptional, landscaped west facing garden.

The first floor has been arranged with two double bedrooms and a family bathroom. The loft has been cleverly extended, including a glass balustrade heading up the stairs to give maximum light. In the principle bedroom you'll find three large Velux windows, shutters and a luxury ensuite shower room, with eaves storage.

The house is presented with exceptional taste, artwork, furniture and a perfect example of how these houses can be lived in and enjoyed to the full.

Hardy Road is a quiet, tree lined, no through road in the sought after Battles' area within Wimbledon. Near the northern line, superb schools, a selection of shops, and a vibrant choice of bars and restaurants.

Features

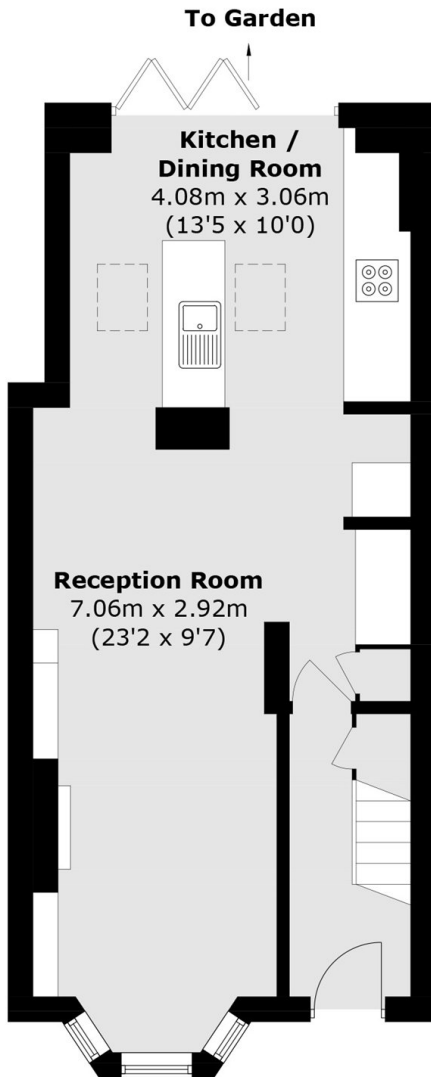
- Three Double Bedrooms
- Two Bathrooms
- West Facing Garden
- Victorian Terraced House
- Landscaped Garden
- Fully Refurbished



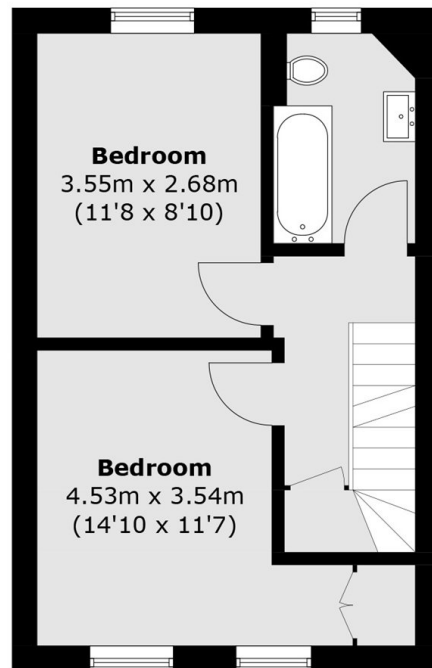




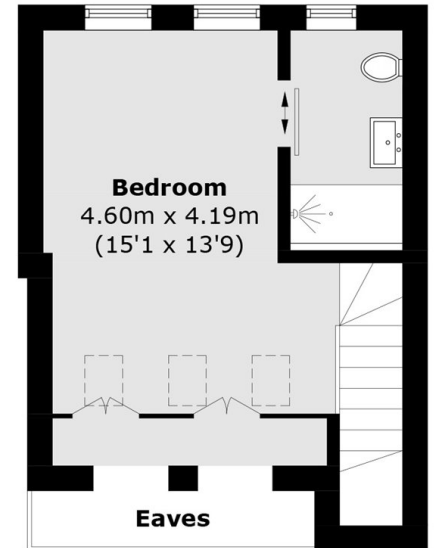
Hardy Road, London, SW19



Ground Floor



First Floor



Second Floor

Total area (approx.): 103.0 sq. m (1,108.7 sq. ft)
(Excluding Eaves)