



River Park Tower, London, SW8

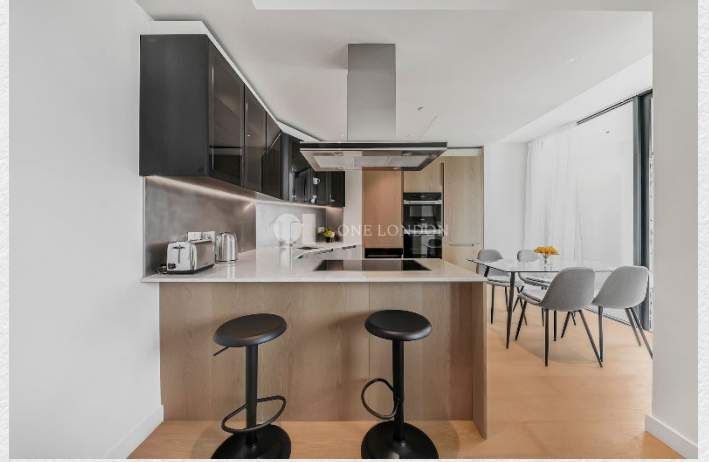
£5,850 pcm

- 2 bedrooms
- 2 bathrooms
- Premium Resident Facilities
- Gym and Studios
- Sky and Business Lounges
- Private cinema and games room
- 24-hour concierge
- Furnished
- 957 sq ft

Discover a masterpiece of contemporary design in this light-filled sanctuary. Every inch of this spacious apartment has been meticulously crafted to maximize space, featuring floor-to-ceiling windows that bathe the refined interiors in natural light. With high-specification kitchens and bathrooms, your home becomes a sophisticated retreat from the city's pace.

Life here extends far beyond your front door. Find inspiration in our extensive amenity spaces, including a state-of-the-art gym, business lounge, and a stunning Sky Lounge and roof terrace. Entertainment is effortless with dedicated multimedia rooms for cinema, karaoke, and games.

Our 24-hour concierge provides an unparalleled lifestyle experience, from travel arrangements to event planning. Ideally located moments from the River Thames, Nine Elms, and Vauxhall hubs, the city is at your fingertips via the Underground or the nearby Thames Clipper.





ONE LONDON

PROPERTY

Riverpark Tower, Nine Elms, London, SW8

SIZE

960 sq ft

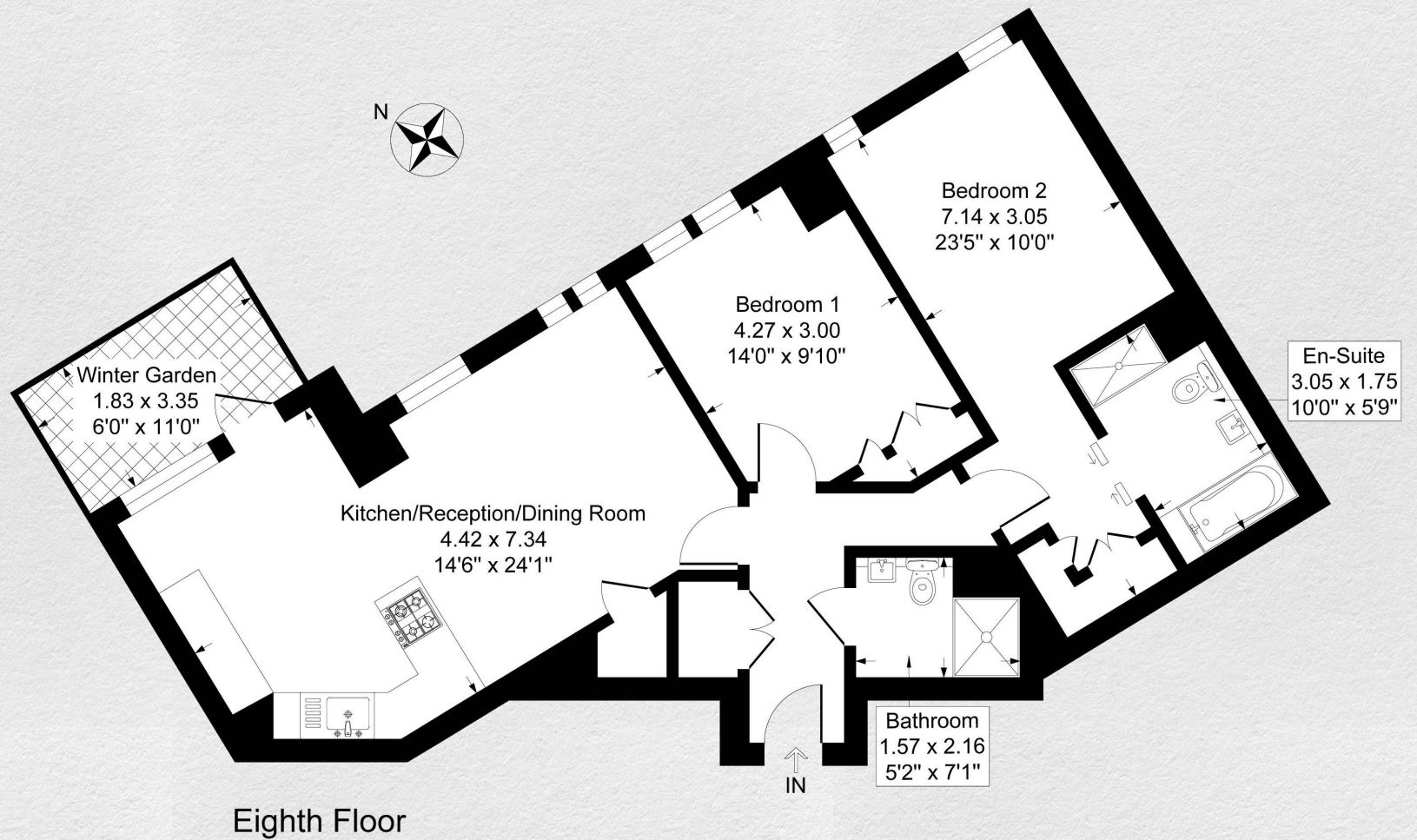
Two bedroom / Two bathroom

CONTACT

0207 856 0396

info@one-london.uk

www.one-london.uk



*** For illustration purposes only. Could not be to scale.
One-London aims to ensure accuracy but is not liable
for any discrepancies.*

RP908