



Mover Lea House Newton Road, North Petherton TA6 6NA



A well presented, spacious 4 bed roomed detached house with 4 reception rooms, enclosed landscaped garden to rear with Summer House, garage, private gated driveway with ample parking situated in this popular location close to local amenities and within easy access to junction 24 of the M5.





Features

- Entrance Hall
- Living Room with multi-fuel fire and French doors to courtyard garden
- Dining Room
- Fitted Kitchen with Velux windows and door to front
- Utility Room
- Snug with French doors to garden
- Reception Room with door to garden
- Cloakroom
- Master Bedroom with fitted wardrobes
- 3 further Bedrooms, Bedroom 2 with fitted wardrobe
- Family Bathroom with separate shower
- Enclosed landscaped garden to rear with Summer House and useful Shed
- Garage and private gated driveway with ample parking
- Gas central heating
- Double glazing
- Council tax band D
- What3words:
///putty.guard.busy







Mover Lea House is situated in this popular village location close to local amenities.

Taunton, the County Town of Somerset, 7.9 miles away is a bustling, forward-looking town with excellent amenities, a good selection of independent and high street shops, distinctive restaurants, cafés, a wealth of history and sporting facilities including the County Cricket Ground.

Taunton benefits from a main line railway station linking to London Paddington in less than 2 hours and excellent communications for the M5 motorway at Junction 24.

For rural pursuits, the Quantock and Brendon Hills plus further west Exmoor National Park all provide excellent walking, cycling and riding. Bridgwater and Taunton canal is also nearby providing walks along the towpath.



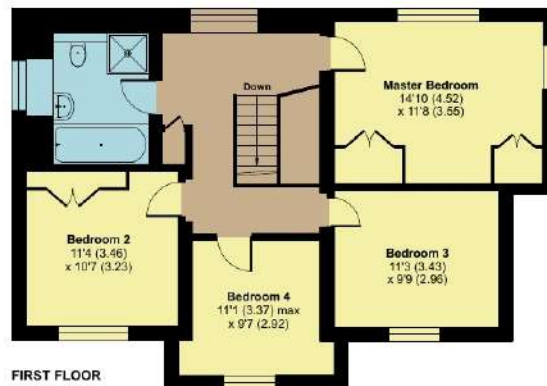
Mover Lea House, Newton Road, North Petherton, Bridgwater, TA6 6NA

Approximate Area = 2007 sq ft / 186.4 sq m

Garage = 170 sq ft / 15.7 sq m

Total = 2177 sq ft / 202.1 sq m

For identification only - Not to scale



FIRST FLOOR



GROUND FLOOR



Viewing strictly through the selling agents:

Robert Cooney

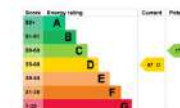
Corporation Street, Taunton,
Somerset TA1 4AW

Telephone 01823 230 230

E-mail taunton@robertcooney.co.uk

Website robertcooney.co.uk

Floor plan produced in accordance with RICS Property Measurement 2nd Edition, incorporating International Property Measurement Standards (IPMS2 Residential). © nchecom 2026. Produced for Robert Cooney. REF: 1470244



**robert
cooney**

For clarification, we wish to inform prospective purchasers that: these particulars are set out as a general outline only for the guidance of intended purchasers, and do not constitute, nor constitute part of, an offer or contract; all descriptions, dimensions, references to condition and necessary permission for use and occupation, and other details, are given without responsibility and any intending purchasers should not rely on them as statements or representation of fact, but must satisfy themselves by inspection or otherwise as to the correctness of each of them; no person in the employment of Robert Cooney has any authority to make or give any representation or warranty whatever in relation to this property; we have not carried out a detailed survey nor tested the services, appliances and specific fittings.

