



COUNTRY
HOLMES

Leicester Drive, Glossop

£299,500

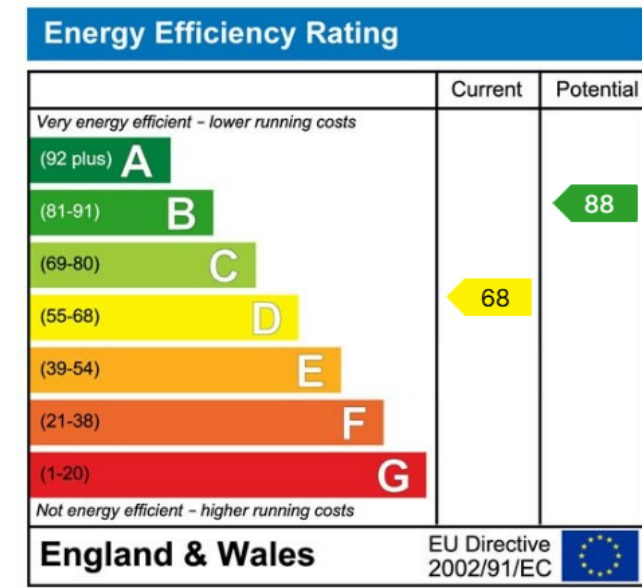
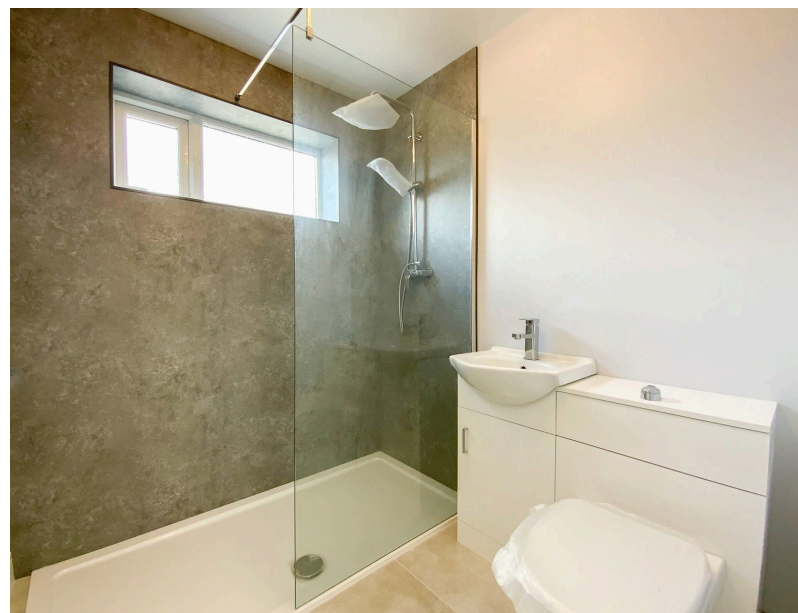
 2  1  1



- Two Bed Bungalow
- Ample Parking
- Totally Refurbished
- New Bathroom
- Council Tax Band C
- Large Plot
- Detached Garage
- New kitchen
- New Flooring Throughout
- Leasehold 958 Yrs



Country Holmes offers this recently modernised bungalow for sale with NO ONWARD CHAIN. Sitting on an ample-sized plot, this property has been completely refurbished with a new kitchen, bathroom and has been modernised throughout. Decorated to a high standard, this property also has new flooring throughout. In brief the property comprises; lounge diner, kitchen, two double bedrooms and a bathroom. Gardens to the front and rear with a driveway for several cars and a detached garage. To the rear is a flagged patio area and a good-sized lawn.



01457 761310 | glossop@countryholmes.co.uk | www.countryholmes.co.uk
 18 High Street West, Glossop, Derbyshire, SK13 8BH