



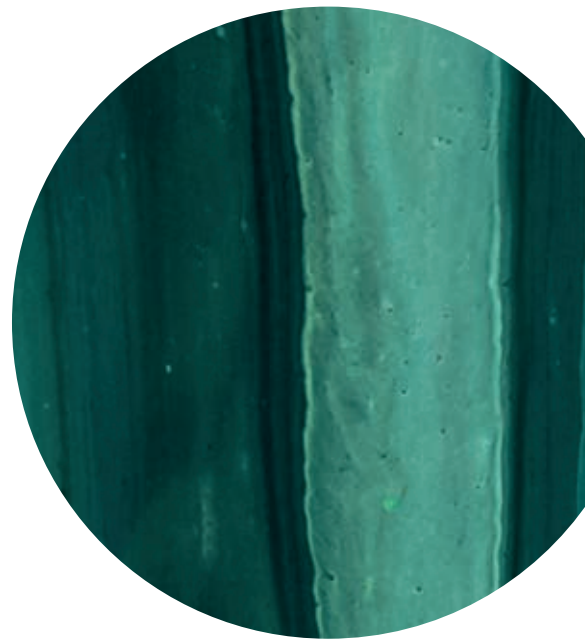
dylon
riverside

Sydenham | SE26



Weston
Homes

Discover **DYLON RIVERSIDE**
a new destination development
in **SYDENHAM**, *South-East*
London that's built on a
RICH *and* **VIBRANT**
heritage.



Live **LIFE in**
full **COLOUR**

Dylon Riverside is a new development of one, two & three bedroom apartments in Sydenham overlooking green open space and the Pool River. Located in a prime position beside Lower Sydenham station for easy transport connections in and out of London, and a short walk from Sydenham high street and Beckenham with its bustling cafés, restaurants and bars.

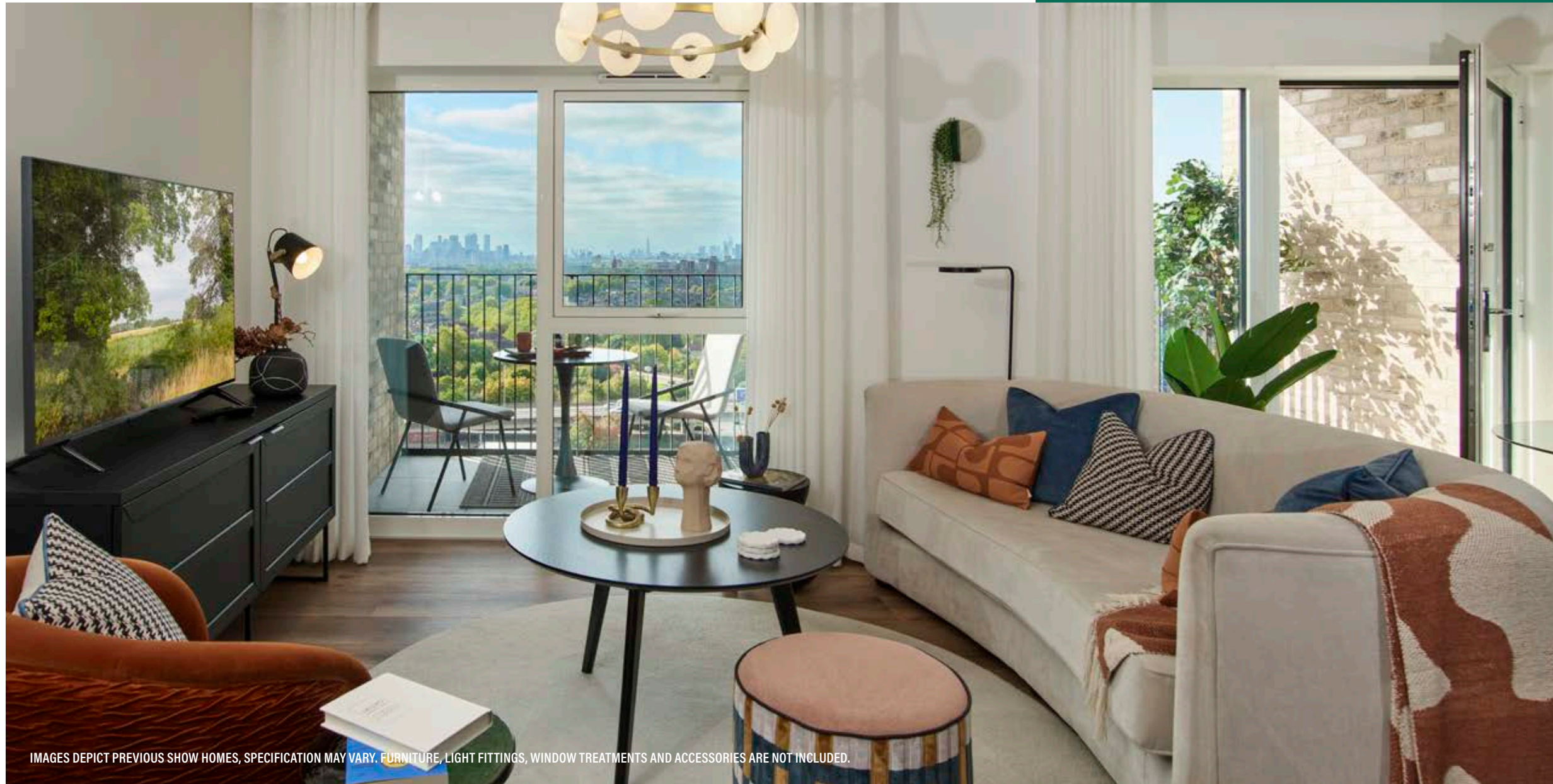
This new community is built on the grounds of the old Dylon factory, where colour was encouraged and vibrancy was essential. Dylon Riverside will mirror this energy, providing the premium quality that Weston Homes is known for and bring new life into the neighbourhood.

Setting the **TONE** for South LONDON

With inspiring architecture and green open space, Dylon Riverside by award-winning developer Weston Homes offers the very best in modern living. Designed to the highest standard with a luxurious fully inclusive specification, there is no better place to call home.



COMPUTER GENERATED IMAGE IS FOR INDICATIVE PURPOSES ONLY.



IMAGES DEPICT PREVIOUS SHOW HOMES, SPECIFICATION MAY VARY. FURNITURE, LIGHT FITTINGS, WINDOW TREATMENTS AND ACCESSORIES ARE NOT INCLUDED.

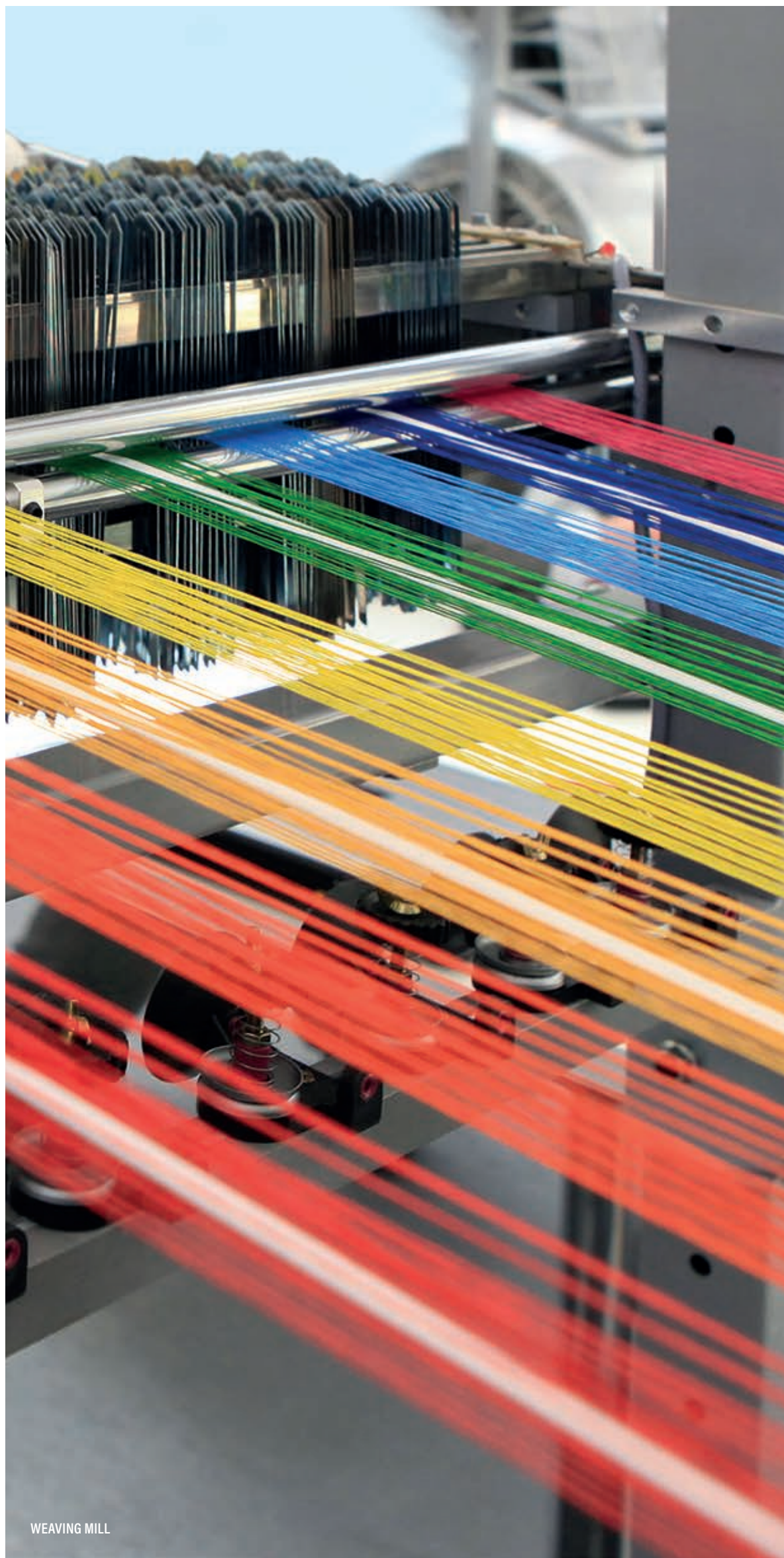
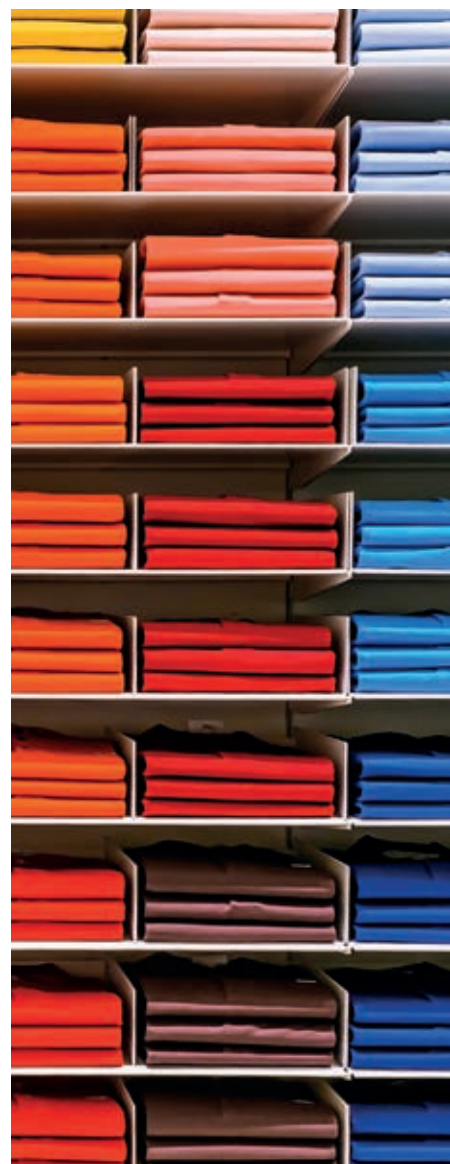
*Nothing beats a
FRESH coat of paint*

Buying a new home can be a daunting process. At Weston Homes, we will guide you through every step of the way.

So why buy new?

- Weston Homes' fully inclusive specification with everything you'd expect and a lot more you wouldn't, means you can move in and start enjoying your new lifestyle from the moment you unlock the door.
- You'll be the very first homeowner and won't inherit any DIY disasters from a previous occupier.
- Our homes are sustainable and built with the environment in mind, saving energy, water and your pocket.
- Carefully considered flexible living spaces, with full height windows and light-filled rooms are perfect for modern day living.
- Have peace of mind with a 10-year NHBC warranty, including a two-year warranty from Weston Homes.
- We create new communities; places to make a genuine difference to the lives of our customers.
- There are no forward chains which takes away the uncertainty when buying an older home.





Built on a **RICH** history

Short for 'Dyes of London', Dylan's factory on this site was established in 1946 by Luca Purbeck and Peter Samuel, based on an ambitious vision to bring new light and life to post-war Britain.

Adding colour to clothes, curtains and a host of other fabrics and textiles, the factory brought joy into people's lives for over half a century. By 2008, it had been surpassed by other facilities around the world and was eventually acquired by Weston Homes as part of a second great vision for the area. One that keeps colour front and centre - but this time as a place to call home.



OLD DYLAN FACTORY DOOR HANDLES



WEAVING MILL

A new PALETTE for LONDON living

The area boasts the very best in dining, shopping and cultural delights. Sydenham is packed full of independent gems which makes for a diverse and joyful neighbourhood.

The active and creative community in Sydenham take huge pride in maintaining the heritage of the area whilst encouraging a positive evolution. Join the Ensemble 26 group of writers, artists and musicians to celebrate and develop your skills in the performing arts, or take up a pitch at the Grow Mayow Community Garden and get back to nature.

Immerse yourself in all this friendly neighbourhood has to offer. Visit Dragonfly Yoga Studio which offers classes for all abilities and when you are done, pop into Good Food for freshly baked pastries.



LOCAL COMMUNITY GARDEN



SUGAHILL CAFE



BLOSSOM & THREADS



GOOD FOOD



COMMUNITY GROUPS



DRAGONFLY YOGA STUDIO



BLACKBIRD BAKERY & CAFE



LOCAL ARTWORK



SYLVAN POST



COBB'S CORNER CAFE

COLOURING *outside the* LINES



LOCAL MURAL



SYDENHAM HILL



KIRKDALE BOOKSHOP



MAX MADE ME



Embrace all *things* ARTISTIC

The area around Dylan Riverside is well-known for its artistic community. Sydenham Arts is the hub of this activity, with a full schedule of events running throughout the year that range from classic film screenings and live music, to interactive craft activities.

The Anna Lovely Gallery is operated by artists, for artists. It's a great place to spot up-and-coming talent, find a special piece for your new home, or take a class yourself.

Sydenham is a neighbourhood with a personality and feel entirely of its own.

Dylan Riverside is a 15-minute walk from Sydenham high street, where you'll find hidden gems and authentic local shops tucked around every corner. From green grocers to book shops, this eclectic village has it all. And of course, it wouldn't be a London neighbourhood without a great mixture of friendly pubs, chic bars and a diverse mix of restaurants drawing influence from around the world. Head to The Greyhound to sample the very best fine wines and craft beers or stroll over to Trattoria Raffaele for the most authentic Italian cuisine. No matter what you are in the mood for, Sydenham has it all.

Local life around SYDENHAM

Growth is part of the **FABRIC** of SYDENHAM

Over the last few years, a new generation of businesses have set up shop in South London. From independent restaurants, boutique retailers and artisan bakeries to vintage shops and pop-up markets.

As well as arriving in Sydenham, many of these new amenities sit in the surrounding areas. Forest Hill and Crystal Palace boast great shopping and restaurant scenes, with Beckenham and East Dulwich also packed full of places to explore.

Open spaces and pretty views sit at the heart of Dylon Riverside. Famed for its leafy streets, Sydenham is an incredibly green area, with plenty of trees and public parks near the development. The fabulous Crystal Palace Park, has everything from a maze and skatepark to a museum and the parks famous dinosaur sculptures.

FOOD & DRINK

- 1 Sugahill Café
- 2 Cobb's Corner Café
- 3 Forest Café & Bistro
- 4 The Teapot Forest Hill
- 5 Brown & Green Café
- 6 Heart of Penge Café
- 7 Trattoria Raffaele
- 8 Hibagon Sushi & Grill

WELLBEING

- 9 Sydenham Wells Park
- 10 Mayow Park
- 11 Riverpool Walkway Open Space
- 12 Alexandra Sports Ground
- 13 Sydenham Hill Wood
- 14 Crystal Palace Park
- 15 Forest Hill Pools
- 16 Beckenham Place Park

RETAIL

- 17 Bunka Store
- 18 Alexandra Nurseries
- 19 Kirkdale Bookshop
- 20 Mabel's Five & Dime
- 21 Max Made Me Do It
- 22 Vardo
- 23 Bell Green Retail Park

SUPERMARKETS

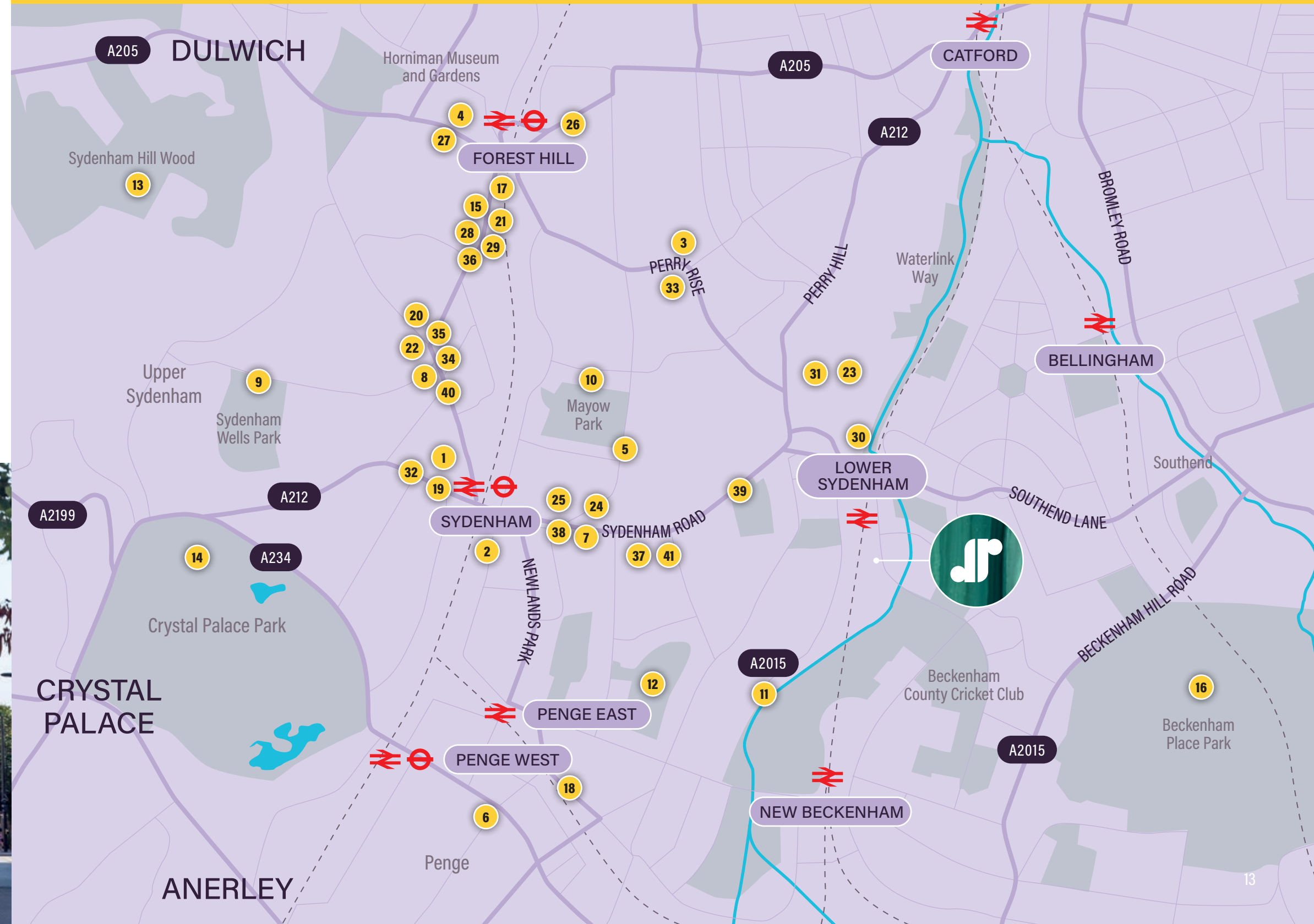
- 24 Haji & Sons
- 25 Billings
- 26 Olives and more London
- 27 The Butchery Ltd SE23
- 28 Aga's Little Deli
- 29 Beetroot and Beans
- 30 Sainsbury's
- 31 Aldi

BEAUTY

- 32 Teddy's Beauty & Aesthetics
- 33 Hectik Hair
- 34 George's Barber Shop
- 35 JH Skincare Clinic
- 36 WUMU Aesthetics & Makeup

ARTS & CULTURE

- 37 The Poodle Club
- 38 Sydenham Arts
- 39 Sydenham Library
- 40 Artisan Village
- 41 Anna Lovely Gallery



SYDENHAM HIGH STREET

For the mind, body & SOUL



It's easy to **STAY ACTIVE**
and healthy at
DYLON RIVERSIDE.
Whether it's a simple
walk in one of the
nearby parks or an
hour of **HIGH-INTENSITY**
cardio at one of
Sydenham's gyms.

For swimmers, Forest Hill Pools is 1.7 miles away. Their 25-metre pool suits both fitness and recreational needs. For something a little different, visit the Dragonfly Yoga Studio and Cannon Golf indoor simulator on the high street - to help you get moving in whatever way feels right.

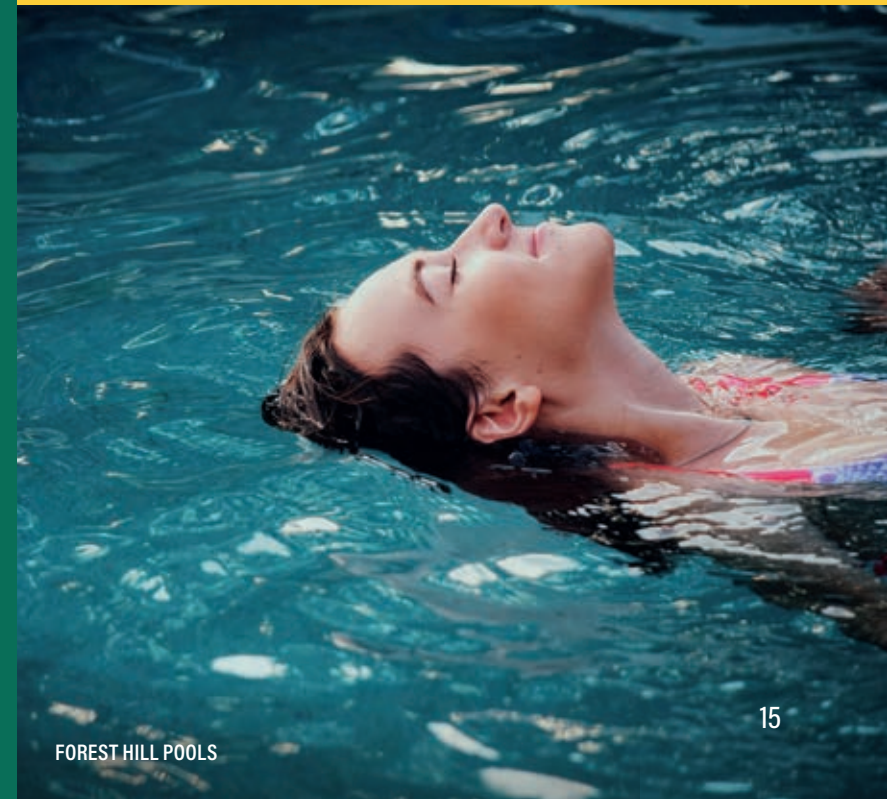
Closer to home, the 4.6 acre development includes expansive parkland for both residents and the local community to enjoy. With its own children's play area, calisthenic gym, winding walking trails, and meticulous tree planting to enhance the area's biodiversity, the garden reaches towards the Pool River and provides the perfect space for family get-togethers, quiet walks, or getting back in touch with nature.



CRYSTAL PALACE PARK



CALISTHENIC GYM AREA



FOREST HILL POOLS



BECKENHAM PLACE STUDIOS

BECKENHAM *has colour and vibrancy in its* DNA

Just a short 10-minute drive away from Dylon Riverside, Beckenham high street boasts a wonderful collection of restaurants, bars and cafés. Head to El Molino for Spanish tapas or spend an afternoon at Papilio for British and international style dishes.

Wander down to the Br3wery for locally brewed craft beers. Their terrace is the perfect place to relax with friends, or try The Chancery, a traditional gastro pub offering guests Sunday roasts. Beckenham has an active entertainment and leisure scene, Beckenham Place Mansion is home to artists studios and craft fairs, as well as wellbeing classes including yoga, pilates and other activities. Or if chilling is more your vibe, head to the ODEON to watch the latest releases in the renowned Art Deco styled cinema.



BECKENHAM HIGH STREET



GREENWICH PARK



THE O2



South LONDON'S *hidden* PALETTE

Everyone experiences London differently, and the city's true colours come to life south of the River Thames. There's always something new to discover, a market to explore, or a museum to while away the afternoon.




- | | |
|------------------------|----------------------------|
| 1 Brixton Windmill | 13 Old Royal Naval College |
| 2 POP Brixton | 14 Dulwich Picture Gallery |
| 3 Brixton Market | 15 Brockley Market |
| 4 Venn Street Market | 16 House of Dreams Museum |
| 5 Brockwell Park | 17 O2 Academy Brixton |
| 6 Peckham Levels | 18 Electric Brixton |
| 7 Dulwich Park | 19 Dulwich Woods |
| 8 Herne Hill Market | 20 Southbank Centre |
| 9 Horniman Museum | 21 Nunhead Cemetery |
| 10 Crystal Palace Park | 22 Battersea Power Station |
| 11 Greenwich Park | 23 Borough Market |
| 12 The O2 | 24 Beckenham Place Mansion |





A **KALEIDOSCOPE** of educational opportunities

Sydenham is a fantastic place to grow up, with a strong sense of belonging and plenty of top schools within a three-mile radius. All of the schools below received an 'Outstanding' or 'Good' rating from Ofsted.

 SCHOOLS	 BY FOOT	 BY CAR
WATERGATE SCHOOL	13 MINS	03 MINS
HARRIS GIRLS ACADEMY	18 MINS	05 MINS
KILMORIE PRIMARY SCHOOL	26 MINS	06 MINS
RATHFERN PRIMARY SCHOOL	27 MINS	06 MINS
HARRIS PRIMARY ACADEMY	36 MINS	09 MINS
ELIOT BANK PRIMARY SCHOOL	44 MINS	10 MINS
HARRIS CITY ACADEMY	58 MINS	13 MINS

* Travel times taken from Google Maps



DISCOVER *all* of London's **HUES**

Dylon Riverside is a two-minute walk away from Lower Sydenham Station.

Train journeys to London Bridge or Cannon Street take just 14 or 25 minutes respectively, with the Northern, Circle, and District lines providing easy connections across the capital.



BY BIKE FROM
DYLON RIVERSIDE

CRYSTAL PALACE
26 MINUTES

PECKHAM
29 MINUTES

BRIXTON
33 MINUTES

CROYDON
36 MINUTES



BY RAIL FROM
LOWER SYDENHAM STATION

LONDON BRIDGE
14 MINUTES

CHARING CROSS
24 MINUTES

CANNON STREET
25 MINUTES

CLAPHAM JUNCTION
43 MINUTES



BY OVERGROUND FROM
SYDENHAM STATION

CANADA WATER
16 MINUTES

SHOREDITCH HIGH STREET
16 MINUTES

LONDON LIVERPOOL STREET
43 MINUTES

VICTORIA
48 MINUTES





IMAGE DEPICTS SHOW HOME AT DYLON RIVERSIDE. FURNITURE, LIGHT FITTINGS, WINDOW TREATMENTS AND ACCESSORIES ARE NOT INCLUDED.

A new **SHADE** of excellence

The homes at Dylon Riverside come complete with Weston Homes' unique, fully inclusive specification as standard, meaning you can start enjoying your new home from the moment you move in.

DESIGNER KITCHENS

- Wide choice of designer units by Oakwood Kitchens*
- Choice of quartz stone worktops and splashback*
- Full range of integrated appliances:
 - Stainless steel electric fan oven
 - Black glass electric hob
 - Fridge/freezer
 - Washer/dryer
 - Dishwasher
 - Microwave
- Electrolux stainless steel chimney extractor
- Fascino instant boiling and cold filtered water tap
- Integrated stainless steel soap dispenser
- LED lighting under kitchen wall units

CONNECTIVITY

- Hyperoptic Superfast Broadband enabled - subject to contract

BATHROOMS & EN SUITE

- Fascino lever digitally controlled Smart tap
- Smart mirror with LED lighting, shaver socket, digital clock and de-mist pad
- Vanity units with integrated storage space in a choice of three finishes*
- Luxurious black porcelain worktop with mounted RAK ceramics basin
- Arctic white shower trays and baths in matt finish with stainless steel waste cover
- RAK Ceramics Hygiene+ WC with RAKRimless™ pan and soft-close ergonomic design seat
- Fascino Smart shower with digital control to shower rooms, and / or Fascino Smart bath with digital control
- Chrome heated towel rails
- Choice of RAK Ceramics porcelain wall and floor tile colours with polished finishes*
- Low level LED strip lighting

*Choices from Weston Homes' range are subject to the stage of construction and may vary from the images shown. †Please speak to our Sales Consultants for plot specific details. Specification may vary. Furniture, light fittings, window treatments and accessories are not included. Everything else is part of our premium, fully inclusive specification as standard.

A COLOURFUL specification



IMAGE DEPICTS PREVIOUS SHOW HOMES, SPECIFICATION MAY VARY. FURNITURE, LIGHT FITTINGS, WINDOW TREATMENTS AND ACCESSORIES ARE NOT INCLUDED.

GENERAL FINISHES

- Alpine finish doors with polished chrome ironmongery, matching door-linings, architraves and skirtings
- Choice of flooring to entrance hall, living area, dining area, kitchen and cloakrooms/cupboards*
- Choice of carpets with underlay to bedrooms*
- Fitted mirrored wardrobes to principal bedroom only
- Television and telephone points to living area and principal bedroom
- White power sockets fitted in all rooms
- Smoke alarm
- Sprinkler system
- Aluminium double-glazed windows and external doors
- Audio/visual entry system to apartments accessed via communal entrance doors
- Communal air source heat pump via radiators
- Energy saving light bulbs fitted throughout
- Parking available with 7.2kW electric car dcharger point on selected plots

CONSTRUCTION METHOD

- External walls – reinforced concrete frame with curtain walling or UNipanel inner leaf and brickwork outer leaf
- Ground and Upper Floors – 300-250mm thick reinforced concrete
- Roof – reinforced concrete to falls with inverted roof system

LOCAL AUTHORITY

- Bromley Borough Council

TENURE

- The homes at Dylon Riverside are of leasehold tenure with a 999-year lease term that commenced on 1st January 2023

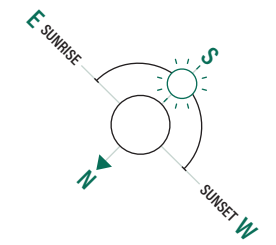
*Choices from Weston Homes' range are subject to the stage of construction and may vary from the images shown.

†Please speak to our Sales Consultants for plot specific details. Specification may vary. Furniture, light fittings, window treatments and accessories are not included. Everything else is part of our premium, fully inclusive specification as standard.

Development PLAN

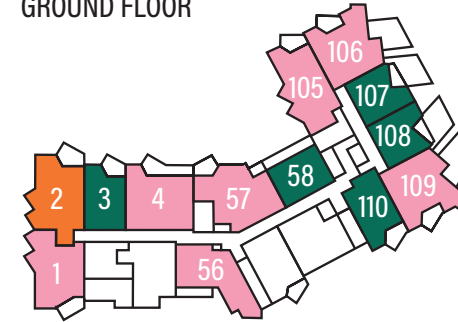


Plot LOCATOR

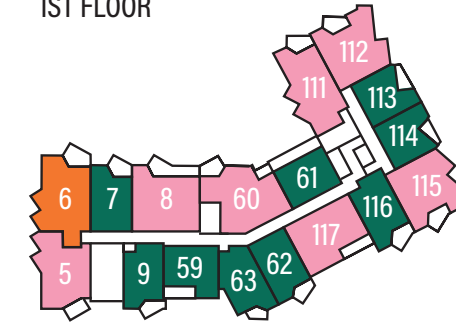


PURBECK APARTMENTS

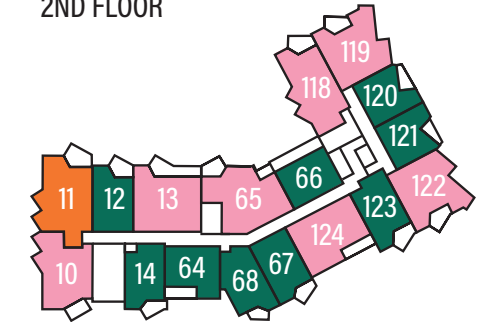
GROUND FLOOR



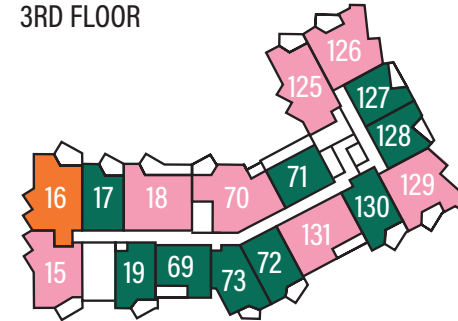
1ST FLOOR



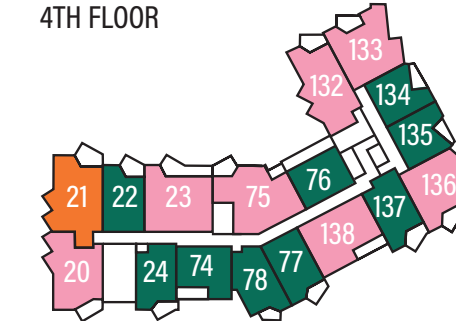
2ND FLOOR



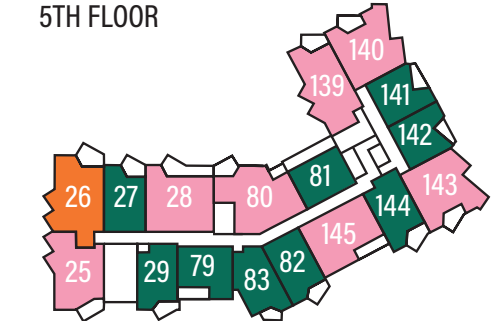
3RD FLOOR



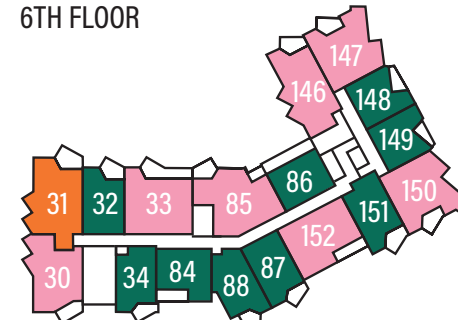
4TH FLOOR



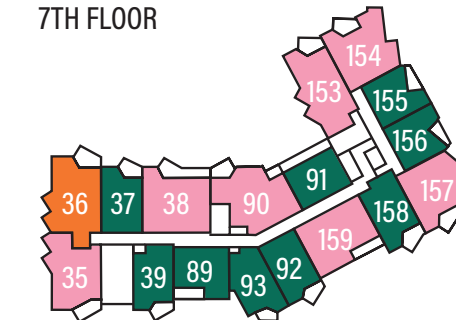
5TH FLOOR



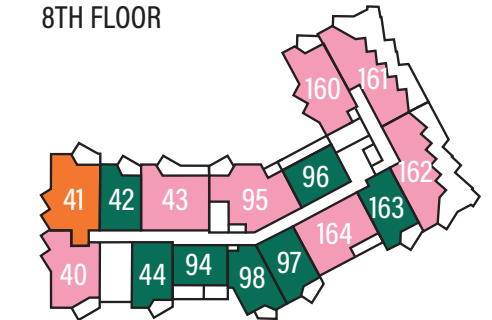
6TH FLOOR



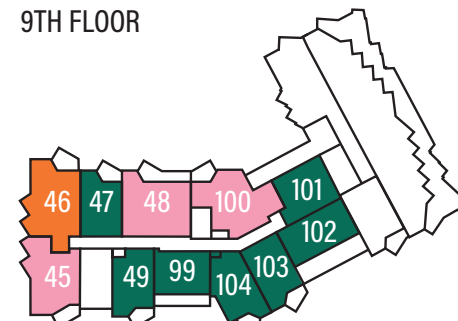
7TH FLOOR



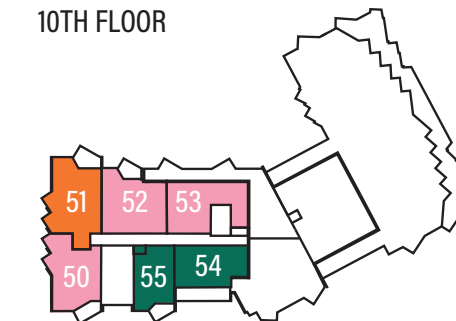
8TH FLOOR



9TH FLOOR



10TH FLOOR



KEY

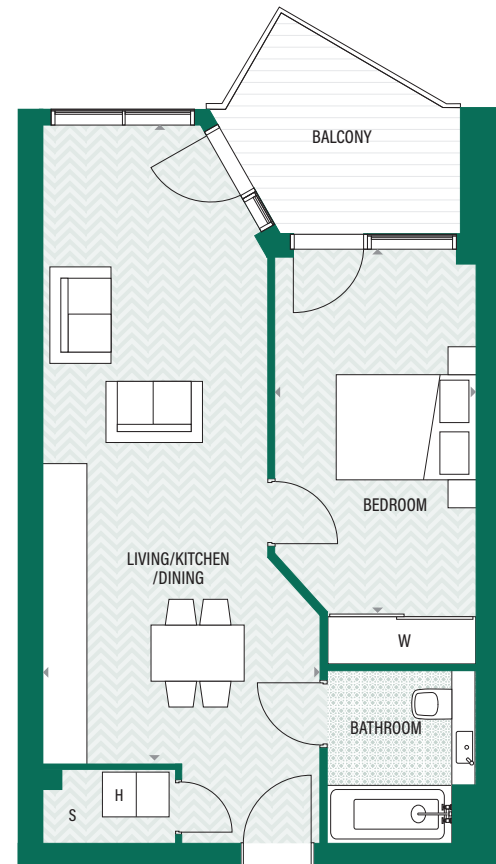
■ 1 BEDROOM APARTMENT ■ 2 BEDROOM APARTMENT ■ 3 BEDROOM APARTMENT



The apartments
FLOOR PLANS

Plots 3*, 7, 12, 17, 22, 27, 32, 37, 42, 47

1 BEDROOM | TYPE 1B.1



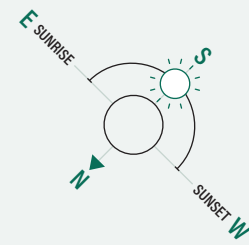
Measurements

Living / Kitchen / Dining	8.7 m x 3 m	28'5" x 10"
Bedroom 1	4.9 m x 2.7 m	16'2" x 9"
Total Internal Area	51.6 sq m	555 sq ft

Balcony size varies from plot to plot. *Apartment 3 has a Terrace.

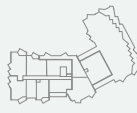
◀ ▶ Measurement Points S Storage W Fitted Wardrobe H Heating

All areas and dimensions have been taken from architect plans prior to construction, therefore whilst the information is believed to be correct its accuracy cannot be guaranteed and does not form part of any contract. They are not intended to be used for carpet sizes or items of furniture. Purchasers must therefore rely on their own inspection to verify any information provided. All dimensions are within + or - 50mm.

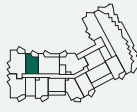


PLOT LOCATORS

PURBECK APARTMENTS



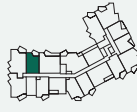
10TH FLOOR



9TH FLOOR



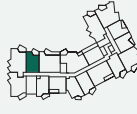
8TH FLOOR



7TH FLOOR



6TH FLOOR



5TH FLOOR



4TH FLOOR



3RD FLOOR



2ND FLOOR



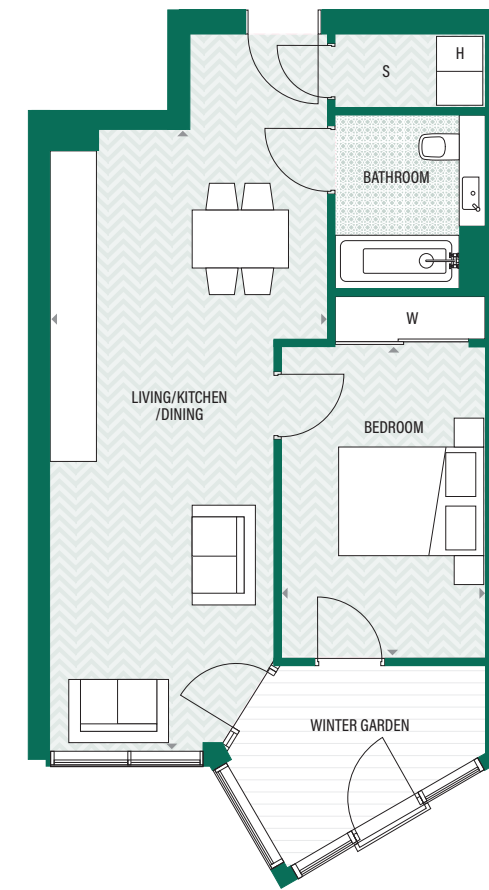
1ST FLOOR



GROUND FLOOR

Plots 9, 14, 19, 24, 29, 34, 39, 44, 49, 55

1 BEDROOM | TYPE 1B.9

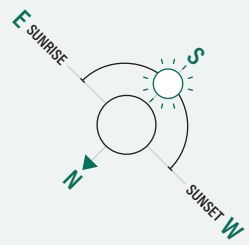


Measurements

Living / Kitchen / Dining	8.3 m x 3.7 m	27'5" x 12'4"
Bedroom 1	4.2 m x 2.7 m	13'9" x 9"
Winter Garden	6.4 sq m	65.6 sq ft
Total Internal Area	56.6 sq m	555 sq ft

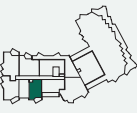
◀ ▶ Measurement Points S Storage W Fitted Wardrobe H Heating

All areas and dimensions have been taken from architect plans prior to construction, therefore whilst the information is believed to be correct its accuracy cannot be guaranteed and does not form part of any contract. They are not intended to be used for carpet sizes or items of furniture. Purchasers must therefore rely on their own inspection to verify any information provided. All dimensions are within + or - 50mm.

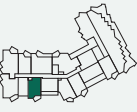


PLOT LOCATORS

PURBECK APARTMENTS



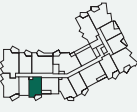
10TH FLOOR



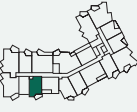
9TH FLOOR



8TH FLOOR



7TH FLOOR



6TH FLOOR



5TH FLOOR



4TH FLOOR



3RD FLOOR



2ND FLOOR



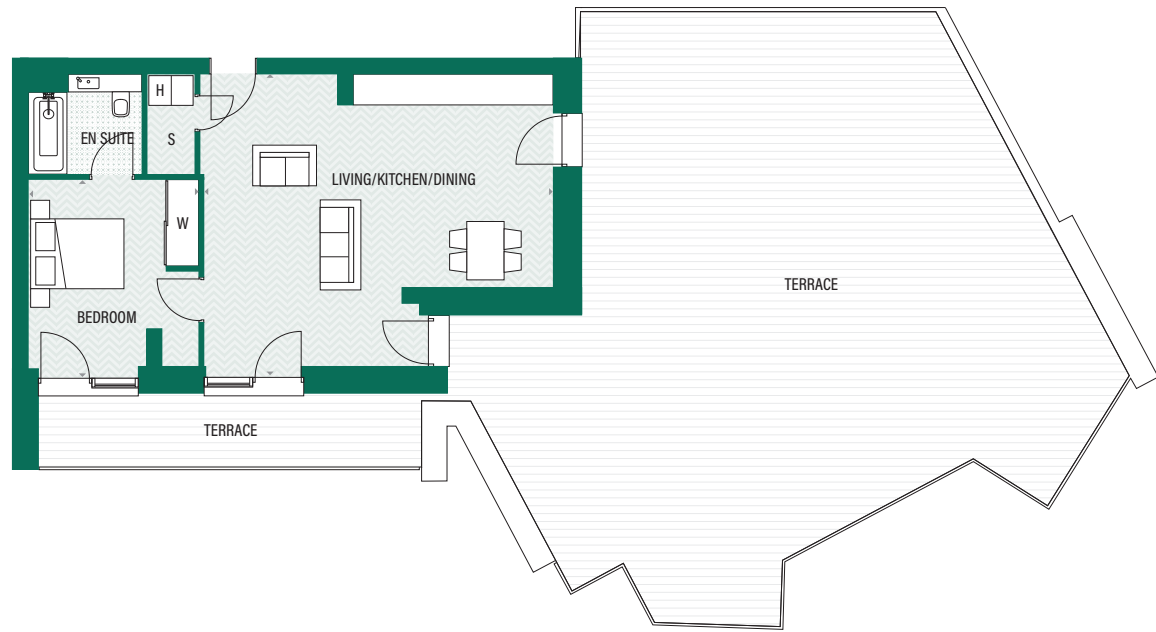
1ST FLOOR



GROUND FLOOR

Plot 54

1 BEDROOM | TYPE 1B.12



Measurements

Living / Kitchen / Dining	7.1 m x 5.9 m	23'5" x 19'7"
Bedroom 1	3.8 m x 3.5 m	12'7" x 11'6"
Totals	60.5 sq m	651 sq ft

Balcony size varies from plot to plot.

◀ ▶ Measurement Points S Storage W Fitted Wardrobe H Heating

All areas and dimensions have been taken from architect plans prior to construction, therefore whilst the information is believed to be correct its accuracy cannot be guaranteed and does not form part of any contract. They are not intended to be used for carpet sizes or items of furniture. Purchasers must therefore rely on their own inspection to verify any information provided. All dimensions are within + or - 50mm.

Plots 58*, 61, 66, 71, 76, 81, 86, 91, 96

1 BEDROOM | TYPE 1B.2

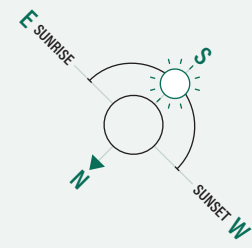


Measurements

Living / Kitchen / Dining	6.1 m x 4.2 m	20'2" x 13'11"
Bedroom 1	3.8 m x 3.7 m	12'6" x 12'3"
Total Internal Area	51.3 sq m	552 sq ft

◀ ▶ Measurement Points S Storage W Fitted Wardrobe H Heating

All areas and dimensions have been taken from architect plans prior to construction, therefore whilst the information is believed to be correct its accuracy cannot be guaranteed and does not form part of any contract. They are not intended to be used for carpet sizes or items of furniture. Purchasers must therefore rely on their own inspection to verify any information provided. All dimensions are within + or - 50mm.

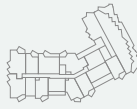


PLOT LOCATORS

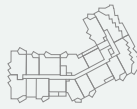
PURBECK APARTMENTS



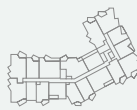
10TH FLOOR



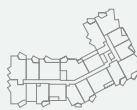
9TH FLOOR



8TH FLOOR



7TH FLOOR



6TH FLOOR



5TH FLOOR



4TH FLOOR



3RD FLOOR



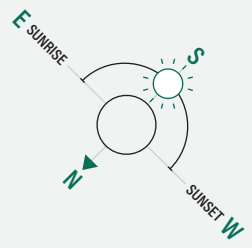
2ND FLOOR



1ST FLOOR



GROUND FLOOR

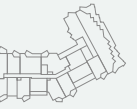


PLOT LOCATORS

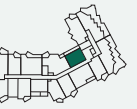
PURBECK APARTMENTS



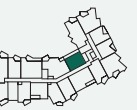
10TH FLOOR



9TH FLOOR



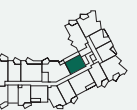
8TH FLOOR



7TH FLOOR



6TH FLOOR



5TH FLOOR



4TH FLOOR



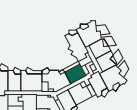
3RD FLOOR



2ND FLOOR



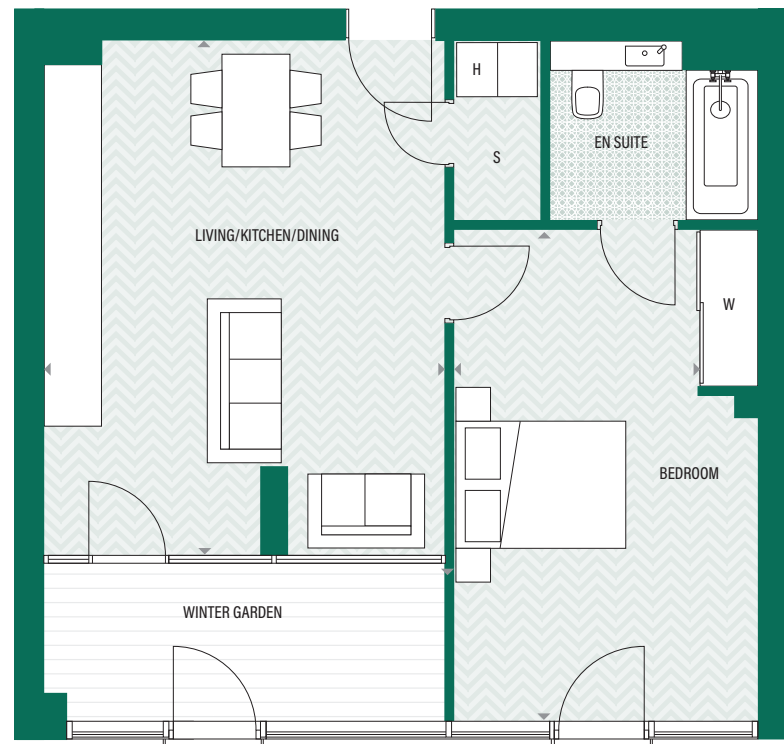
1ST FLOOR



GROUND FLOOR

Plots 59, 64, 69, 74, 79, 84, 89, 94, 99

1 BEDROOM | TYPE 1B.8



Measurements

Living / Kitchen / Dining	5.7 m x 4.5 m	19" x 14'9"
Bedroom 1	5.4 m x 3.4 m	18" x 11'3"
Total Internal Area	53.6 sq m	577 sq ft

Balcony size varies from plot to plot.

◀ ▶ Measurement Points S Storage W Fitted Wardrobe H Heating

All areas and dimensions have been taken from architect plans prior to construction, therefore whilst the information is believed to be correct its accuracy cannot be guaranteed and does not form part of any contract. They are not intended to be used for carpet sizes or items of furniture. Purchasers must therefore rely on their own inspection to verify any information provided. All dimensions are within + or - 50mm.

Plots 62, 67, 72, 77, 82, 87, 92, 97, 103

1 BEDROOM | TYPE 1B.6



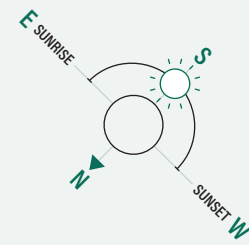
Measurements

Living / Kitchen / Dining	9.6 m x 3.7 m	31'7" x 12'4"
Bedroom 1	4.3 m x 2.7 m	14'2" x 8'4"
Winter Garden	6.1 sq m	65.6 sq ft
Total Internal Area	54.1 sq m	582 sq ft

Winter Garden size varies from plot to plot.

◀ ▶ Measurement Points S Storage W Fitted Wardrobe H Heating

All areas and dimensions have been taken from architect plans prior to construction, therefore whilst the information is believed to be correct its accuracy cannot be guaranteed and does not form part of any contract. They are not intended to be used for carpet sizes or items of furniture. Purchasers must therefore rely on their own inspection to verify any information provided. All dimensions are within + or - 50mm.

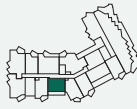


PLOT LOCATORS

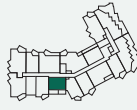
PURBECK APARTMENTS



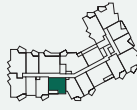
10TH FLOOR



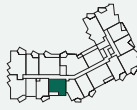
9TH FLOOR



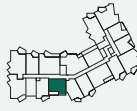
8TH FLOOR



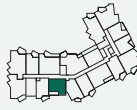
7TH FLOOR



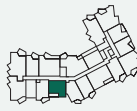
6TH FLOOR



5TH FLOOR



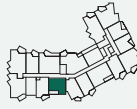
4TH FLOOR



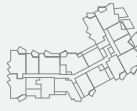
3RD FLOOR



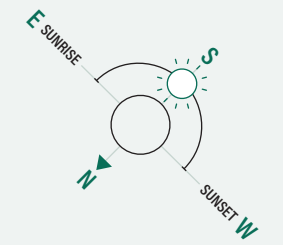
2ND FLOOR



1ST FLOOR



GROUND FLOOR



PLOT LOCATORS

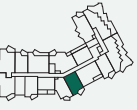
PURBECK APARTMENTS



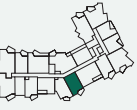
10TH FLOOR



9TH FLOOR



8TH FLOOR



7TH FLOOR



6TH FLOOR



5TH FLOOR



4TH FLOOR



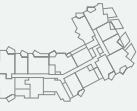
3RD FLOOR



2ND FLOOR



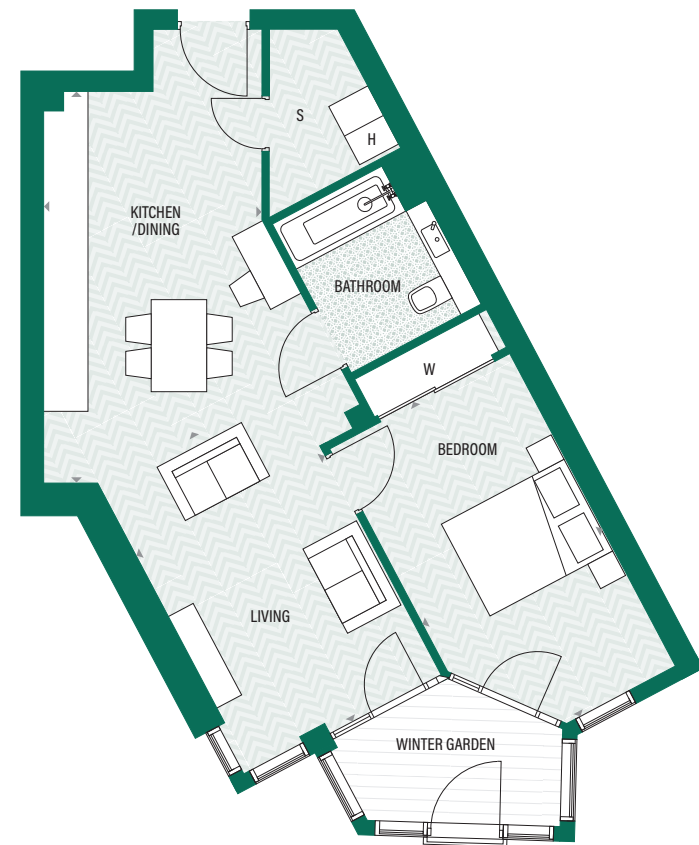
1ST FLOOR



GROUND FLOOR

Plots 63, 68, 73, 78, 83, 88, 93, 98, 104

1 BEDROOM | TYPE 1B.7



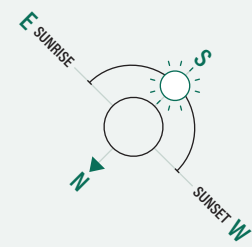
Measurements

Living	4.4 m x 2.9 m	14'8" x 9'6"
Kitchen/Dining	5.3 m x 3.0 m	17'7" x 9'10"
Bedroom 1	4.8 m x 2.7 m	15'11" x 9'2"
Winter Garden	4.7 sq m	50.6 sq ft
Total Internal Area	55.7 sq m	600 sq ft

Winter Garden size varies from plot to plot.

◀ ▶ Measurement Points S Storage W Fitted Wardrobe H Heating

All areas and dimensions have been taken from architect plans prior to construction, therefore whilst the information is believed to be correct its accuracy cannot be guaranteed and does not form part of any contract. They are not intended to be used for carpet sizes or items of furniture. Purchasers must therefore rely on their own inspection to verify any information provided. All dimensions are within + or - 50mm.

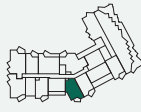


PLOT LOCATORS

PURBECK APARTMENTS



10TH FLOOR



9TH FLOOR



8TH FLOOR



7TH FLOOR



6TH FLOOR



5TH FLOOR



4TH FLOOR



3RD FLOOR



2ND FLOOR



1ST FLOOR



GROUND FLOOR

Plot 101

1 BEDROOM | TYPE 1B.10



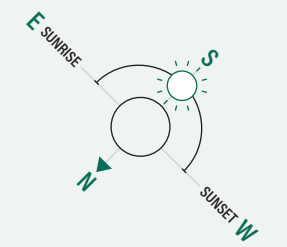
Measurements

Living / Kitchen / Dining	7.7 m x 4.3 m	25'4" x 14'1"
Bedroom 1	3.7 m x 3.2 m	12'1" x 10'6"
Totals	54.1 sq m	582 sq ft

Balcony size varies from plot to plot.

◀ ▶ Measurement Points S Storage W Fitted Wardrobe H Heating

All areas and dimensions have been taken from architect plans prior to construction, therefore whilst the information is believed to be correct its accuracy cannot be guaranteed and does not form part of any contract. They are not intended to be used for carpet sizes or items of furniture. Purchasers must therefore rely on their own inspection to verify any information provided. All dimensions are within + or - 50mm.

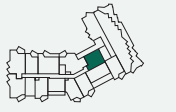


PLOT LOCATORS

PURBECK APARTMENTS



10TH FLOOR



9TH FLOOR



8TH FLOOR



7TH FLOOR



6TH FLOOR



5TH FLOOR



4TH FLOOR



3RD FLOOR



2ND FLOOR



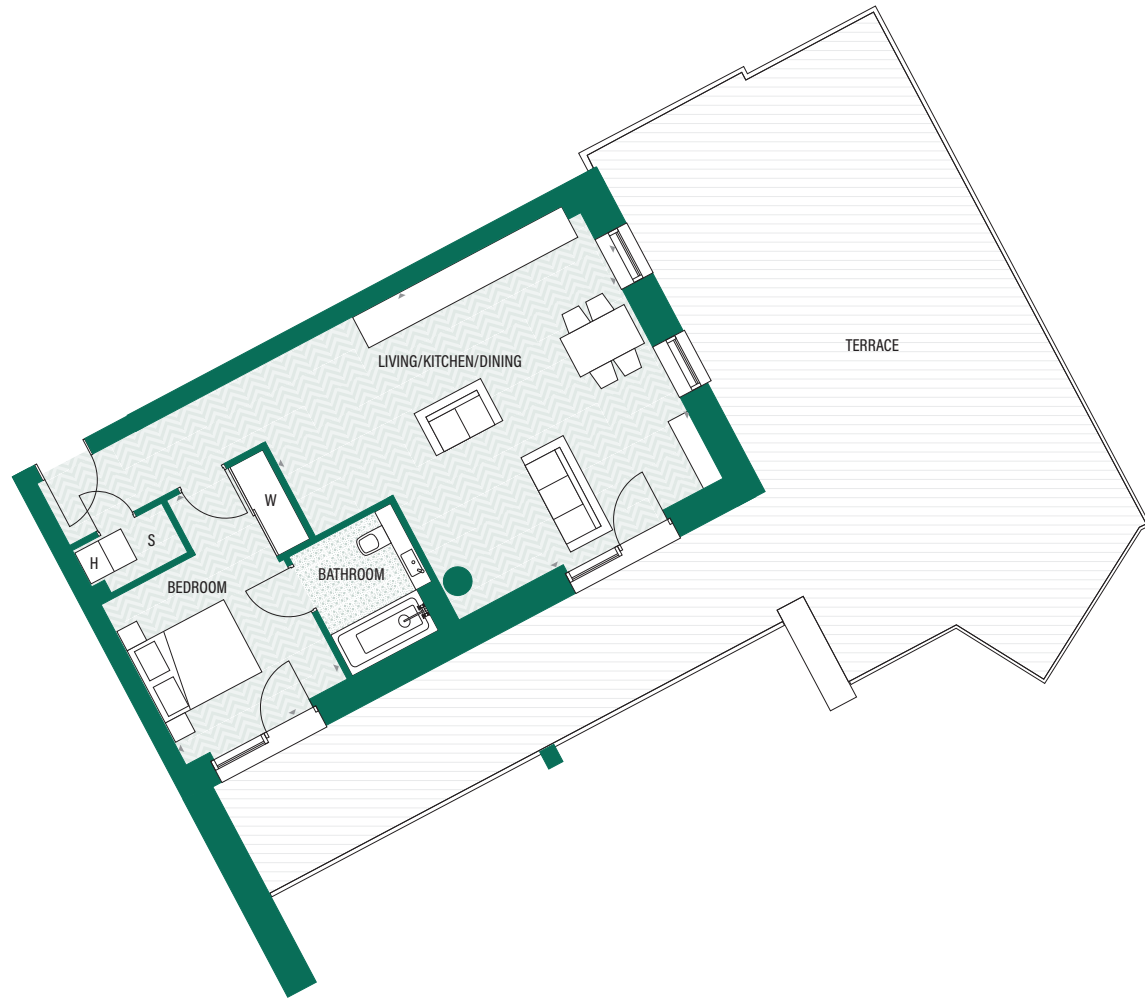
1ST FLOOR



GROUND FLOOR

Plot 102

1 BEDROOM | TYPE 1B.11



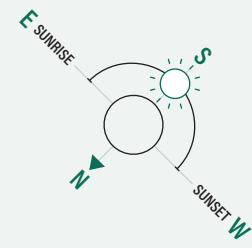
Measurements

Living / Dining / Kitchen	6.7 m x 5.5 m	22'2" x 18'1"
Bedroom 1	4.2 m x 3.2 m	13'11" x 10'6"
Totals	59.6 sq m	642 sq ft

Balcony size varies from plot to plot.

◀ ▶ Measurement Points S Storage W Fitted Wardrobe H Heating

All areas and dimensions have been taken from architect plans prior to construction, therefore whilst the information is believed to be correct its accuracy cannot be guaranteed and does not form part of any contract. They are not intended to be used for carpet sizes or items of furniture. Purchasers must therefore rely on their own inspection to verify any information provided. All dimensions are within + or - 50mm.

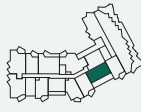


PLOT LOCATORS

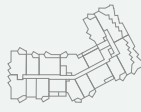
PURBECK APARTMENTS



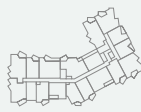
10TH FLOOR



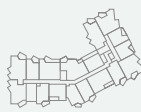
9TH FLOOR



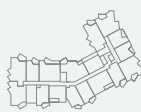
8TH FLOOR



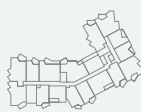
7TH FLOOR



6TH FLOOR



5TH FLOOR



4TH FLOOR



3RD FLOOR



2ND FLOOR



1ST FLOOR



GROUND FLOOR

Plots 107*, 113, 120, 127, 134, 141, 148, 155

1 BEDROOM | TYPE 1B.3



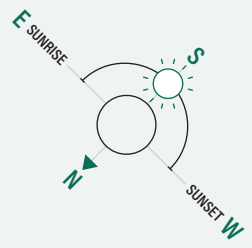
Measurements

Living / Kitchen / Dining	8.0 m x 4.4 m	26'4" x 14'6"
Bedroom 1	4.3 m x 3.7 m	14'2" x 12'1"
Total Internal Area	50.0 sq m	538 sq ft

Balcony size varies from plot to plot. *Apartment 107 has a Terrace.

◀ ▶ Measurement Points S Storage W Fitted Wardrobe H Heating

All areas and dimensions have been taken from architect plans prior to construction, therefore whilst the information is believed to be correct its accuracy cannot be guaranteed and does not form part of any contract. They are not intended to be used for carpet sizes or items of furniture. Purchasers must therefore rely on their own inspection to verify any information provided. All dimensions are within + or - 50mm.



PLOT LOCATORS

PURBECK APARTMENTS



10TH FLOOR



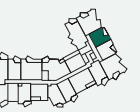
9TH FLOOR



8TH FLOOR



7TH FLOOR



6TH FLOOR



5TH FLOOR



4TH FLOOR



3RD FLOOR



2ND FLOOR



1ST FLOOR



GROUND FLOOR

Plots 108*, 114, 121, 128, 135, 142, 149, 156

1 BEDROOM | TYPE 1B.3(H)



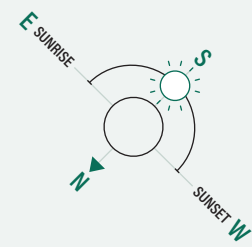
Measurements

Living/Kitchen/Dining	8.0 m x 4.4 m	26'4" x 14'6"
Bedroom 1	4.3 m x 3.7 m	14'2" x 12'1"
Total Internal Area	50.0 sq m	538 sq ft

Balcony size varies from plot to plot. *Apartment 108 has a Terrace.

◀ ▶ Measurement Points S Storage W Fitted Wardrobe H Heating

All areas and dimensions have been taken from architect plans prior to construction, therefore whilst the information is believed to be correct its accuracy cannot be guaranteed and does not form part of any contract. They are not intended to be used for carpet sizes or items of furniture. Purchasers must therefore rely on their own inspection to verify any information provided. All dimensions are within + or - 50mm.

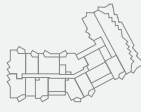


PLOT LOCATORS

PURBECK APARTMENTS



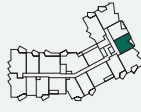
10TH FLOOR



9TH FLOOR



8TH FLOOR



7TH FLOOR



6TH FLOOR



5TH FLOOR



4TH FLOOR



3RD FLOOR



2ND FLOOR



1ST FLOOR



GROUND FLOOR

Plot 110

1 BEDROOM | TYPE 1B.4



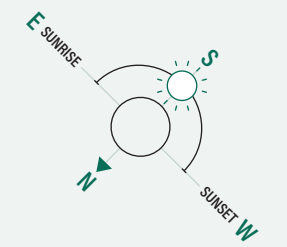
Measurements

Living/Kitchen/Dining	9.4 m x 3.4 m	30'11" x 11'3"
Bedroom 1	3.8 m x 2.7 m	12'9" x 9'
Winter Garden	8.1 sq m	87.1 sq ft
Total Internal Area	56.0 sq m	603 sq ft

Winter Garden size varies from plot to plot.

◀ ▶ Measurement Points S Storage W Fitted Wardrobe H Heating

All areas and dimensions have been taken from architect plans prior to construction, therefore whilst the information is believed to be correct its accuracy cannot be guaranteed and does not form part of any contract. They are not intended to be used for carpet sizes or items of furniture. Purchasers must therefore rely on their own inspection to verify any information provided. All dimensions are within + or - 50mm.

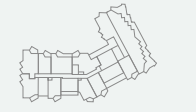


PLOT LOCATORS

PURBECK APARTMENTS



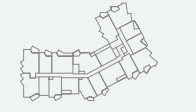
10TH FLOOR



9TH FLOOR



8TH FLOOR



7TH FLOOR



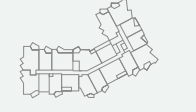
6TH FLOOR



5TH FLOOR



4TH FLOOR



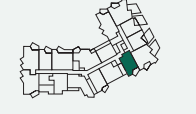
3RD FLOOR



2ND FLOOR



1ST FLOOR



GROUND FLOOR

Plots 116, 123, 130, 137, 144, 151, 158, 163

1 BEDROOM | TYPE 1B.5



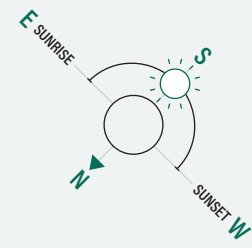
Measurements

Living / Kitchen / Dining	9.7 m x 3.4 m	31'10" x 11'3"
Bedroom 1	3.8 m x 2.7 m	12'9" x 9"
Winter Garden	8.1 sq m	87.1 sq ft
Total Internal Area	56.0 sq m	603 sq ft

Winter Garden size varies from plot to plot.

◀ ▶ Measurement Points S Storage W Fitted Wardrobe H Heating

All areas and dimensions have been taken from architect plans prior to construction, therefore whilst the information is believed to be correct its accuracy cannot be guaranteed and does not form part of any contract. They are not intended to be used for carpet sizes or items of furniture. Purchasers must therefore rely on their own inspection to verify any information provided. All dimensions are within + or - 50mm.



PLOT LOCATORS

PURBECK APARTMENTS

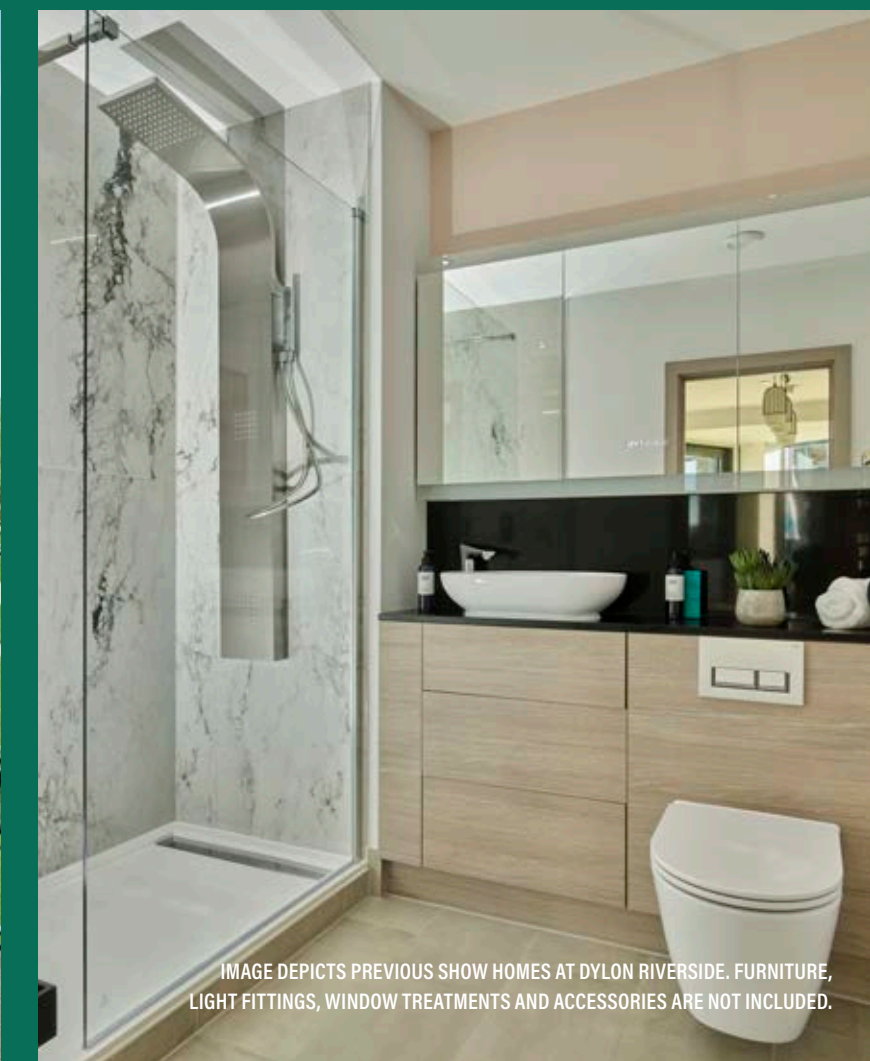
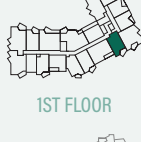
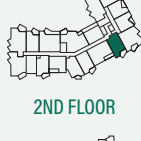
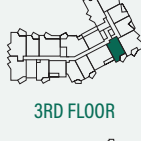
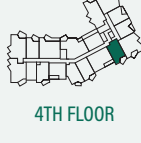
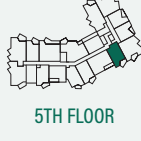
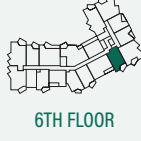


IMAGE DEPICTS PREVIOUS SHOW HOMES AT DYLON RIVERSIDE. FURNITURE, LIGHT FITTINGS, WINDOW TREATMENTS AND ACCESSORIES ARE NOT INCLUDED.

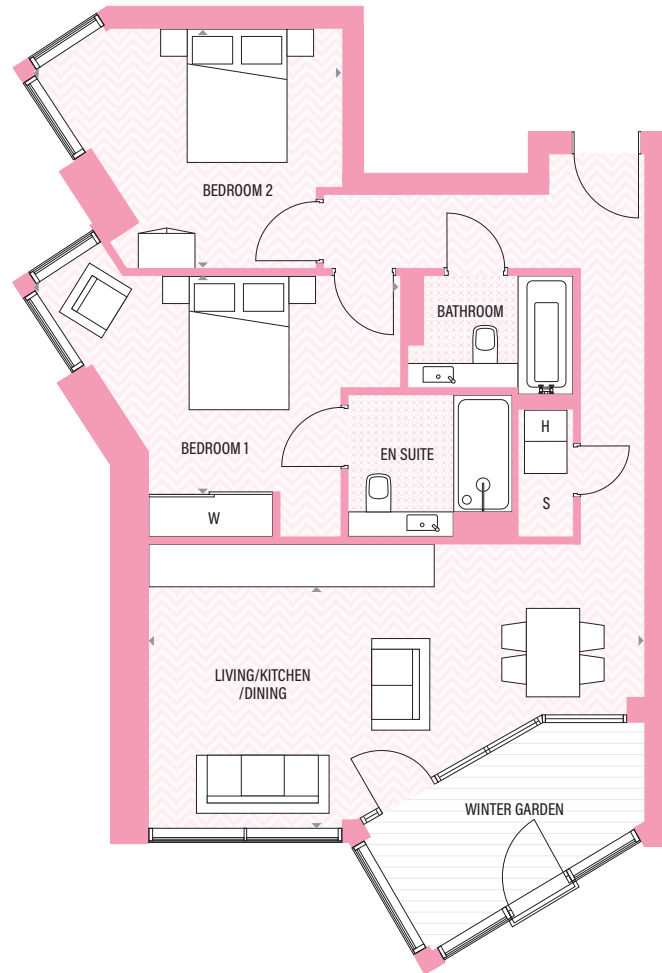
LIFE'S better in
COLOUR and this is
where you'll **FIND** it



COMPUTER GENERATED IMAGE IS FOR INDICATIVE PURPOSES ONLY.

Plots 1, 5, 10, 15, 20, 25, 30, 35

2 BEDROOM | TYPE 2B.1



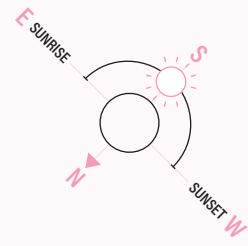
Measurements

Living / Kitchen / Dining	7.1 m x 4.1 m	23'3" x 13'5"
Bedroom 1	3.7 m x 3.9 m	12'5" x 13"
Bedroom 2	3.4 m x 3.2 m	11'3" x 10'9"
Winter Garden	7.9 sq m	85.0 sq ft
Total Internal Area	72.9 sq m	785 sq ft

Winter Garden size varies from plot to plot.

◀ ▶ Measurement Points S Storage W Fitted Wardrobe H Heating

All areas and dimensions have been taken from architect plans prior to construction, therefore whilst the information is believed to be correct its accuracy cannot be guaranteed and does not form part of any contract. They are not intended to be used for carpet sizes or items of furniture. Purchasers must therefore rely on their own inspection to verify any information provided. All dimensions are within + or - 50mm.



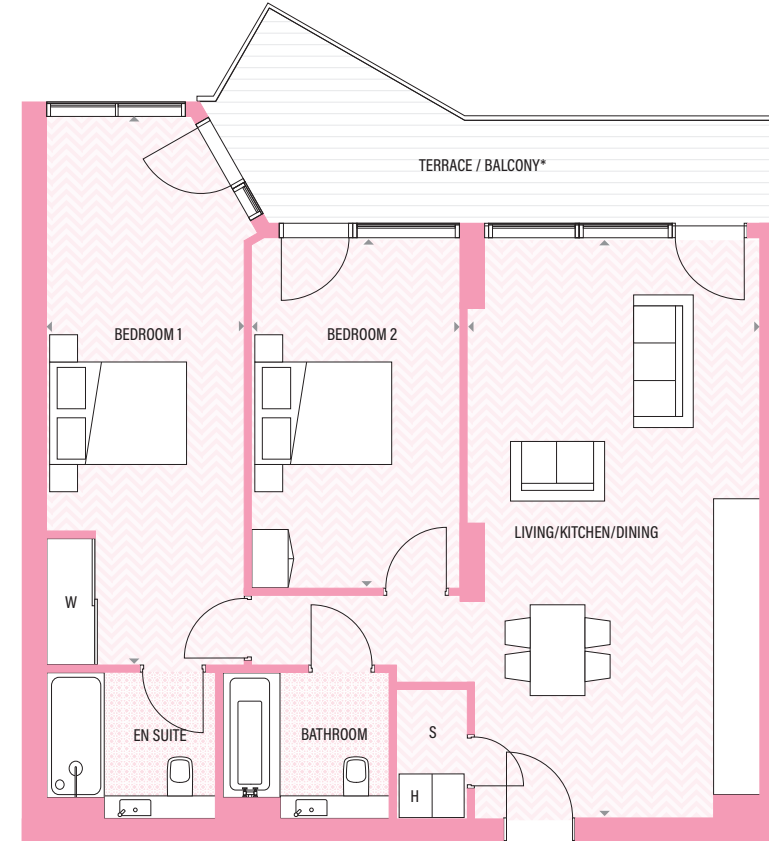
PLOT LOCATORS

PURBECK APARTMENTS



Plots 4, 8, 13, 18, 23, 28, 33, 38, 43, 48

2 BEDROOM | TYPE 2B.2



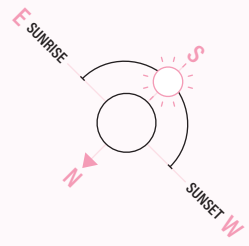
Measurements

Living / Kitchen / Dining	8.0 m x 4.1 m	26'6" x 13'5"
Bedroom 1	7.6 m x 2.7 m	25" x 9"
Bedroom 2	4.8 m x 2.9 m	16" x 9'7"
Total Internal Area	85.9 sq m	925 sq ft

*Terrace to plot 4 and balcony to plots 8, 13, 18, 23, 28, 33, 38, 43, 48.

◀ ▶ Measurement Points S Storage W Fitted Wardrobe H Heating

All areas and dimensions have been taken from architect plans prior to construction, therefore whilst the information is believed to be correct its accuracy cannot be guaranteed and does not form part of any contract. They are not intended to be used for carpet sizes or items of furniture. Purchasers must therefore rely on their own inspection to verify any information provided. All dimensions are within + or - 50mm.



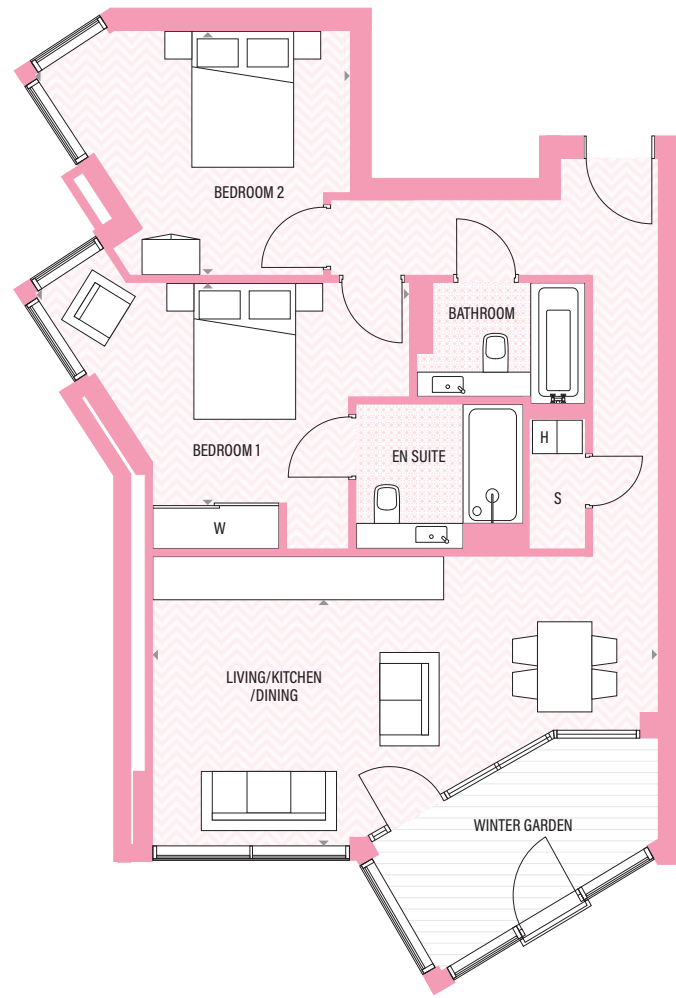
PLOT LOCATORS

PURBECK APARTMENTS



Plots 40, 45, 50

2 BEDROOM | TYPE 2B.1A



Measurements

Living / Kitchen / Dining	7.1 m x 4.1 m	23'3" x 13'5"
Bedroom 1	3.7 m x 3.9 m	12'5" x 13'
Bedroom 2	3.4 m x 3.2 m	11'3" x 10'9"
Winter Garden	9.2 sq m	99.0 sq ft
Total Internal Area	72.9 sq m	785 sq ft

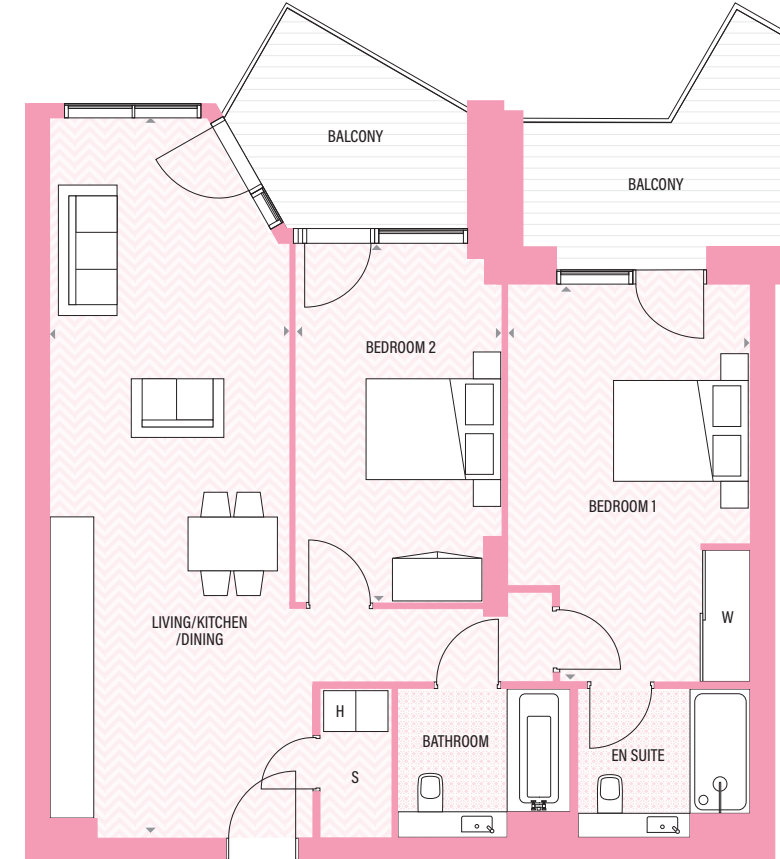
Winter Garden size varies from plot to plot.

◀ ▶ Measurement Points S Storage W Fitted Wardrobe H Heating

All areas and dimensions have been taken from architect plans prior to construction, therefore whilst the information is believed to be correct its accuracy cannot be guaranteed and does not form part of any contract. They are not intended to be used for carpet sizes or items of furniture. Purchasers must therefore rely on their own inspection to verify any information provided. All dimensions are within + or - 50mm.

Plot 52

2 BEDROOM | TYPE 2B.10



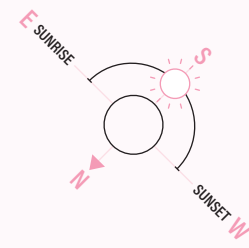
Measurements

Living / Kitchen / Dining	3.6 m x 6.6 m	11'8" x 21'9"
Bedroom 1	3.3 m x 5.4 m	10'10" x 17'7"
Bedroom 2	2.5 m x 4.9 m	8'4" x 16'
Total Internal Area	53.8 sq m	558 sq ft

Balcony size varies from plot to plot. *Apartment 2 has a Terrace.

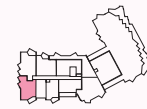
◀ ▶ Measurement Points S Storage W Fitted Wardrobe H Heating

All areas and dimensions have been taken from architect plans prior to construction, therefore whilst the information is believed to be correct its accuracy cannot be guaranteed and does not form part of any contract. They are not intended to be used for carpet sizes or items of furniture. Purchasers must therefore rely on their own inspection to verify any information provided. All dimensions are within + or - 50mm.

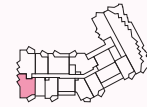


PLOT LOCATORS

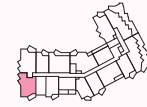
PURBECK APARTMENTS



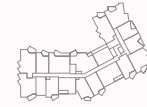
10TH FLOOR



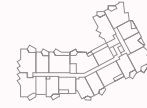
9TH FLOOR



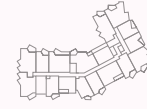
8TH FLOOR



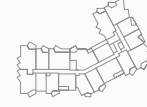
7TH FLOOR



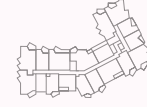
6TH FLOOR



5TH FLOOR



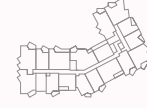
4TH FLOOR



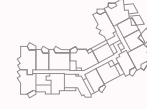
3RD FLOOR



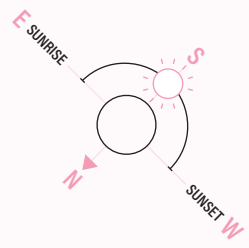
2ND FLOOR



1ST FLOOR

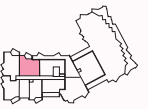


GROUND FLOOR

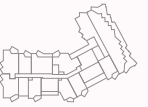


PLOT LOCATORS

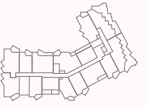
PURBECK APARTMENTS



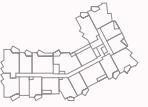
10TH FLOOR



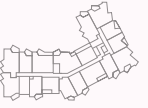
9TH FLOOR



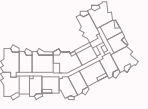
8TH FLOOR



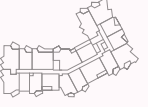
7TH FLOOR



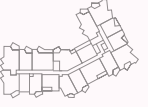
6TH FLOOR



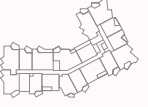
5TH FLOOR



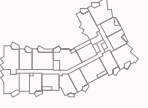
4TH FLOOR



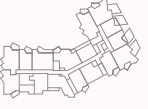
3RD FLOOR



2ND FLOOR



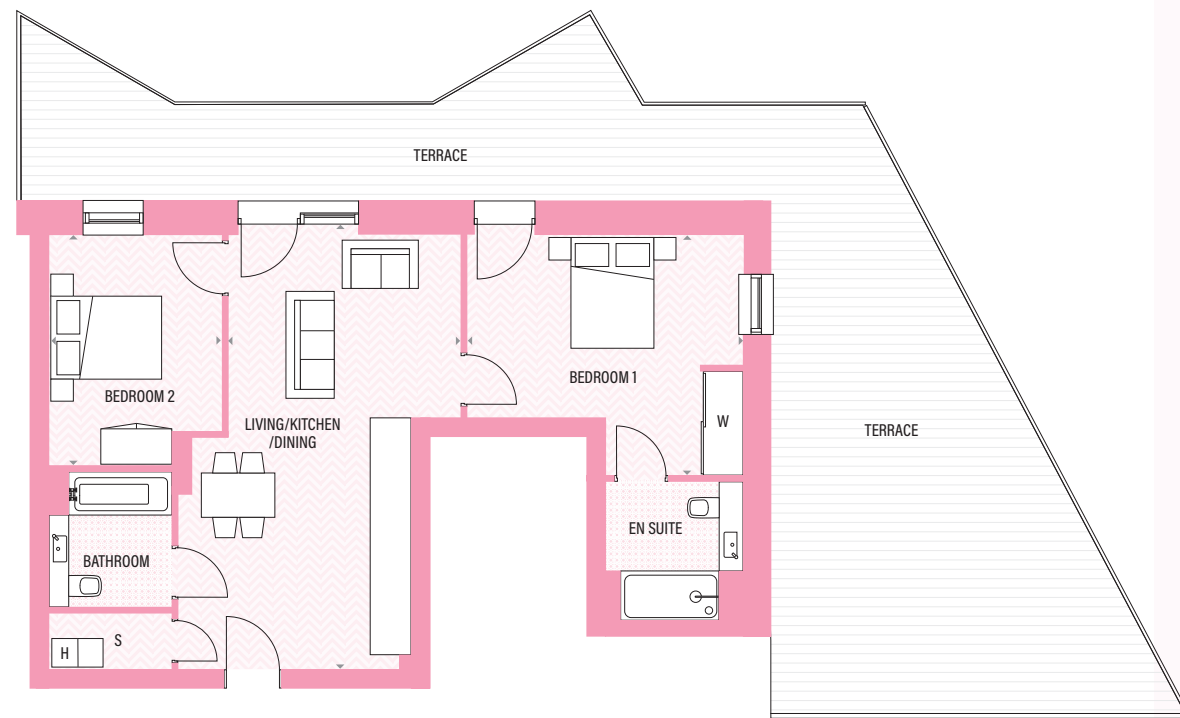
1ST FLOOR



GROUND FLOOR

Plot 53

2 BEDROOM | TYPE 2B.11



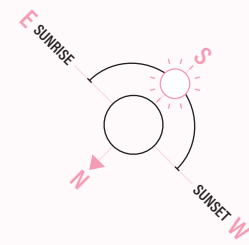
Measurements

Living / Kitchen / Dining	4.0 m x 7.4 m	13" x 24'3"
Bedroom 1	4.7 m x 4.1 m	15'4" x 13'7"
Bedroom 2	4.0 m x 3.0 m	13" x 9'10"
Total Internal Area	74.0 sq m	797 sq ft

Balcony size varies from plot to plot. *Apartment 2 has a Terrace.

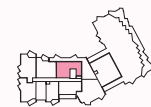
◀ ▶ Measurement Points S Storage W Fitted Wardrobe H Heating

All areas and dimensions have been taken from architect plans prior to construction, therefore whilst the information is believed to be correct its accuracy cannot be guaranteed and does not form part of any contract. They are not intended to be used for carpet sizes or items of furniture. Purchasers must therefore rely on their own inspection to verify any information provided. All dimensions are within + or - 50mm.

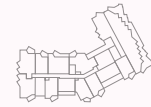


PLOT LOCATORS

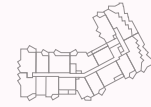
PURBECK APARTMENTS



10TH FLOOR



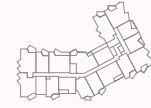
9TH FLOOR



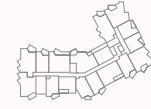
8TH FLOOR



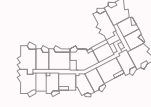
7TH FLOOR



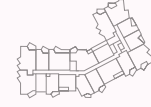
6TH FLOOR



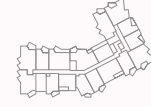
5TH FLOOR



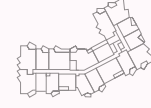
4TH FLOOR



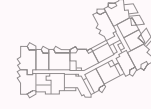
3RD FLOOR



2ND FLOOR



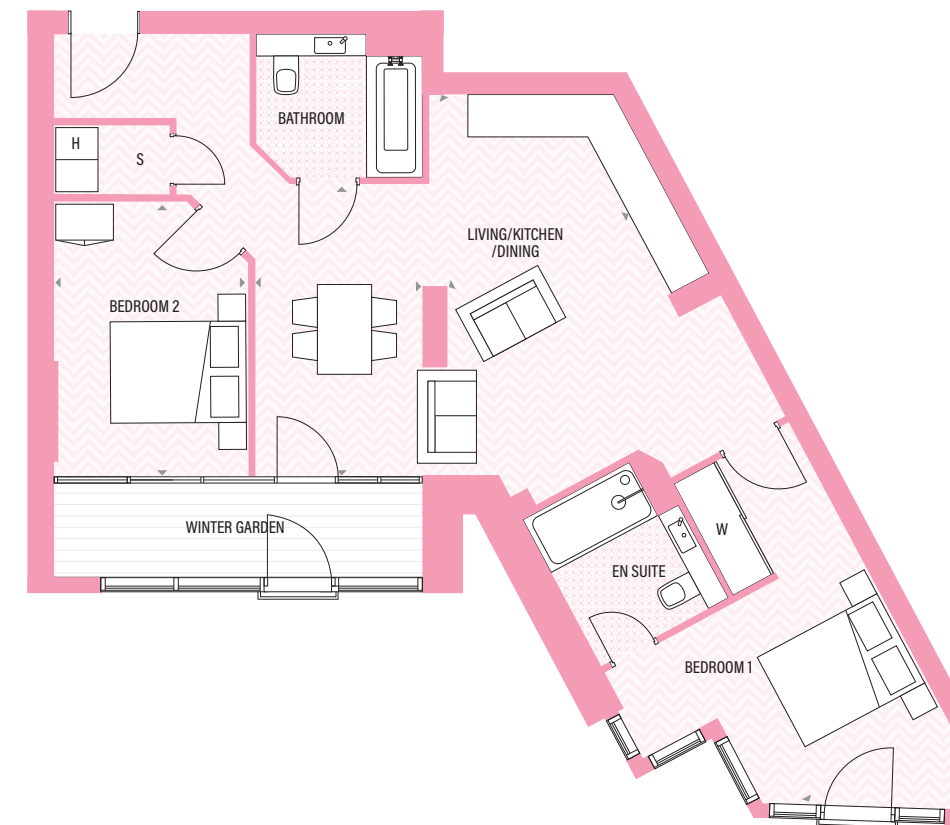
1ST FLOOR



GROUND FLOOR

Plot 56

2 BEDROOM | TYPE 2B.6

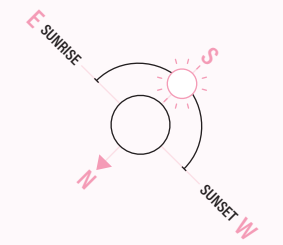


Measurements

Living / Kitchen / Dining	7.5 m x 4.8 m	24'6" x 15'7"
Bedroom 1	5.9 m x 3.9 m	19'4" x 12'11"
Bedroom 2	3.9 m x 2.8 m	12'11" x 9'
Total Internal Area	76.6 sq m	825 sq ft

◀ ▶ Measurement Points S Storage W Fitted Wardrobe H Heating

All areas and dimensions have been taken from architect plans prior to construction, therefore whilst the information is believed to be correct its accuracy cannot be guaranteed and does not form part of any contract. They are not intended to be used for carpet sizes or items of furniture. Purchasers must therefore rely on their own inspection to verify any information provided. All dimensions are within + or - 50mm.

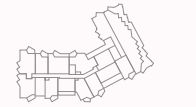


PLOT LOCATORS

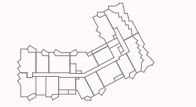
PURBECK APARTMENTS



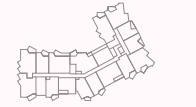
10TH FLOOR



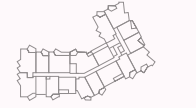
9TH FLOOR



8TH FLOOR



7TH FLOOR



6TH FLOOR



5TH FLOOR



4TH FLOOR



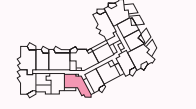
3RD FLOOR



2ND FLOOR



1ST FLOOR



GROUND FLOOR

Plots 57*, 60, 65, 70, 75, 80, 85, 90, 95

2 BEDROOM | TYPE 2B.3



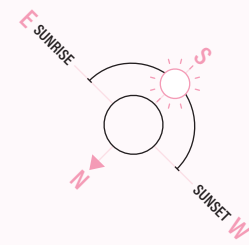
Measurements

Living / Kitchen / Dining	8.0 m x 4.9 m	26'4" x 16'1"
Bedroom 1	5.5 m x 3.1 m	18'2" x 10'3"
Bedroom 2	3.9 m x 3.7 m	12'11" x 12'3"
Total Internal Area	87.3 sq m	940 sq ft

Balcony size varies from plot to plot.

◀ ▶ Measurement Points S Storage W Fitted Wardrobe H Heating

All areas and dimensions have been taken from architect plans prior to construction, therefore whilst the information is believed to be correct its accuracy cannot be guaranteed and does not form part of any contract. They are not intended to be used for carpet sizes or items of furniture. Purchasers must therefore rely on their own inspection to verify any information provided. All dimensions are within + or - 50mm.

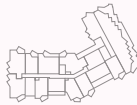


PLOT LOCATORS

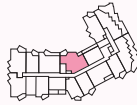
PURBECK APARTMENTS



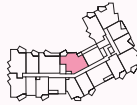
10TH FLOOR



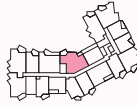
9TH FLOOR



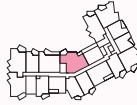
8TH FLOOR



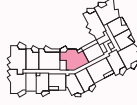
7TH FLOOR



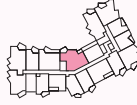
6TH FLOOR



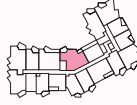
5TH FLOOR



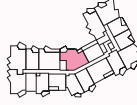
4TH FLOOR



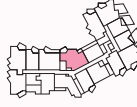
3RD FLOOR



2ND FLOOR



1ST FLOOR



GROUND FLOOR

Plot 100

2 BEDROOM | TYPE 2B.9



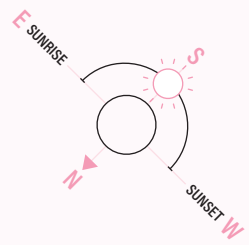
Measurements

Living/Kitchen/Dining	8.0 m x 4.9 m	26'4" x 16'1"
Bedroom 1	3.9 m x 3.7 m	12'11" x 12'3"
Bedroom 2	4.1 m x 3.5 m	13'7" x 11'6"
Total Internal Area	85.9 sq m	925 sq ft

Balcony size varies from plot to plot. *Apartment 57 has a Terrace.

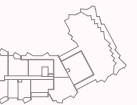
◀ ▶ Measurement Points S Storage W Fitted Wardrobe H Heating

All areas and dimensions have been taken from architect plans prior to construction, therefore whilst the information is believed to be correct its accuracy cannot be guaranteed and does not form part of any contract. They are not intended to be used for carpet sizes or items of furniture. Purchasers must therefore rely on their own inspection to verify any information provided. All dimensions are within + or - 50mm.

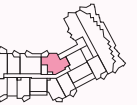


PLOT LOCATORS

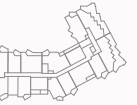
PURBECK APARTMENTS



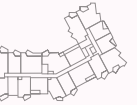
10TH FLOOR



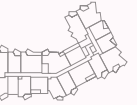
9TH FLOOR



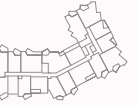
8TH FLOOR



7TH FLOOR



6TH FLOOR



5TH FLOOR



4TH FLOOR



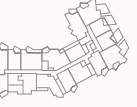
3RD FLOOR



2ND FLOOR



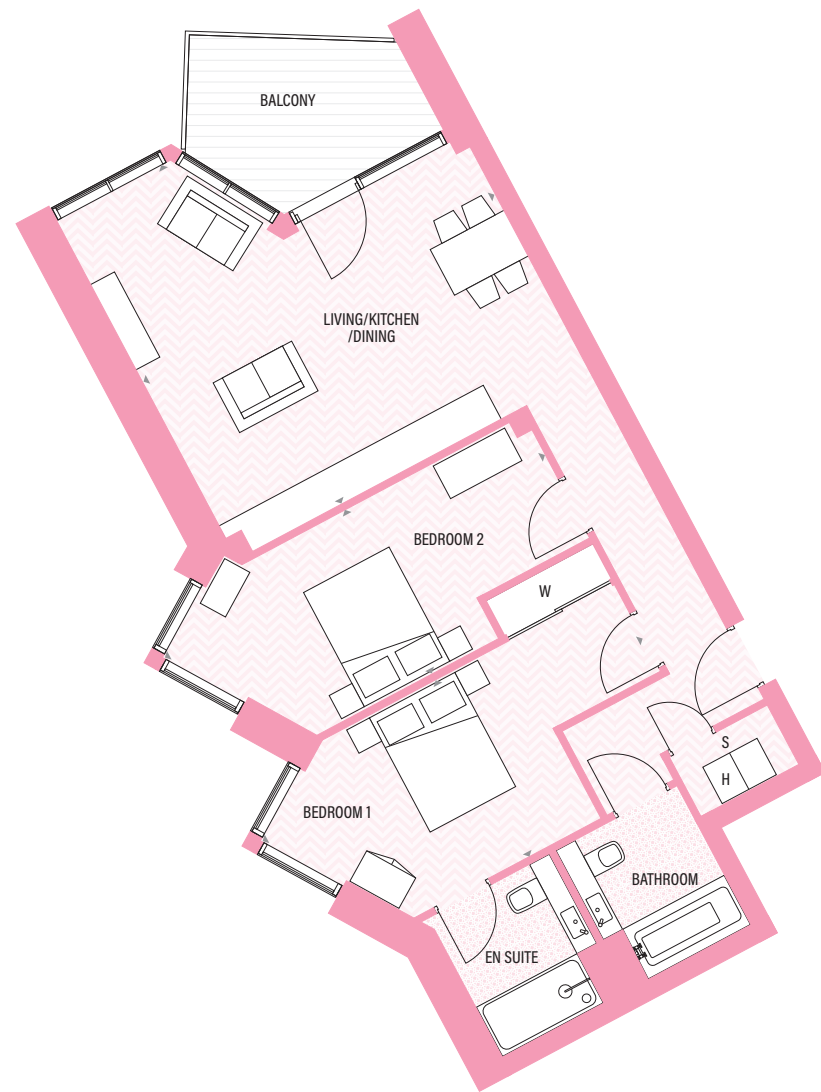
1ST FLOOR



GROUND FLOOR

Plots 105, 111, 118, 125, 132, 139, 146, 153, 160

2 BEDROOM | TYPE 2B.4



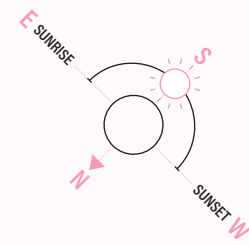
Measurements

Living / Kitchen / Dining	5.8 m x 5.6 m	19'3" x 18'6"
Bedroom 1	4.8 m x 2.9 m	16' x 9'9"
Bedroom 2	4.8 m x 2.7 m	16' x 9'
Total Internal Area	79.1 sq m	851 sq ft

Balcony size varies from plot to plot.

◀ ▶ Measurement Points S Storage W Fitted Wardrobe H Heating

All areas and dimensions have been taken from architect plans prior to construction, therefore whilst the information is believed to be correct its accuracy cannot be guaranteed and does not form part of any contract. They are not intended to be used for carpet sizes or items of furniture. Purchasers must therefore rely on their own inspection to verify any information provided. All dimensions are within + or - 50mm.

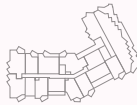


PLOT LOCATORS

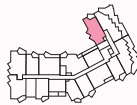
PURBECK APARTMENTS



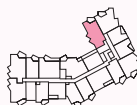
10TH FLOOR



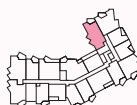
9TH FLOOR



8TH FLOOR



7TH FLOOR



6TH FLOOR



5TH FLOOR



4TH FLOOR



3RD FLOOR



2ND FLOOR



1ST FLOOR



GROUND FLOOR

Plots 106*, 112, 119, 126, 133, 140, 147, 154

2 BEDROOM | TYPE 2B.12



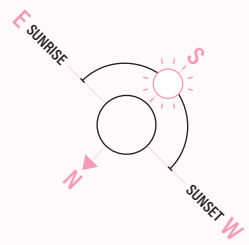
Measurements

Living	4.4 m x 3.7 m	14'8" x 12'1"
Kitchen / Dining	5.4 m x 3.2 m	17'7" x 10'7"
Bedroom 1	5.1 m x 2.8 m	16'11" x 9'3"
Bedroom 2	3.8 m x 3.3 m	12'6" x 10'9"
Total Internal Area	78.4 sq m	844 sq ft

Balcony size varies from plot to plot. *Door to apartment 106 and additional ground floor terrace. Speak to a Sales Consultant for details.

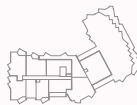
◀ ▶ Measurement Points S Storage W Fitted Wardrobe H Heating

All areas and dimensions have been taken from architect plans prior to construction, therefore whilst the information is believed to be correct its accuracy cannot be guaranteed and does not form part of any contract. They are not intended to be used for carpet sizes or items of furniture. Purchasers must therefore rely on their own inspection to verify any information provided. All dimensions are within + or - 50mm.

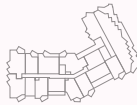


PLOT LOCATORS

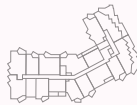
PURBECK APARTMENTS



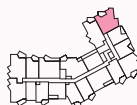
10TH FLOOR



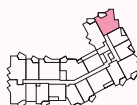
9TH FLOOR



8TH FLOOR



7TH FLOOR



6TH FLOOR



5TH FLOOR



4TH FLOOR



3RD FLOOR



2ND FLOOR



1ST FLOOR



GROUND FLOOR

Plots 109*, 115, 122, 129, 136, 143, 150, 157

2 BEDROOM | TYPE 2B.5



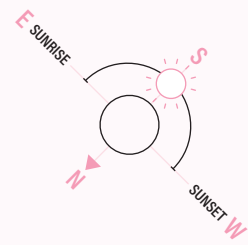
Measurements

Living	4.4 m x 3.5 m	14'8" x 11'7"
Kitchen / Dining	5.4 m x 3.2 m	17'11" x 10'7"
Bedroom 1	4.9 m x 2.8 m	16'1" x 9'5"
Bedroom 2	3.8 m x 3.2 m	12'6" x 10'9"
Winter Garden	7.9 sq m	85.0 sq ft
Total Internal Area	81.3 sq m	875 sq ft

Winter Garden size varies from plot to plot. *Door to apartment 109 and additional ground floor terrace. Speak to a Sales Consultant for details.

◀ ▶ Measurement Points S Storage W Fitted Wardrobe H Heating

All areas and dimensions have been taken from architect plans prior to construction, therefore whilst the information is believed to be correct its accuracy cannot be guaranteed and does not form part of any contract. They are not intended to be used for carpet sizes or items of furniture. Purchasers must therefore rely on their own inspection to verify any information provided. All dimensions are within + or - 50mm.

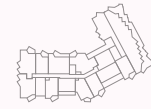


PLOT LOCATORS

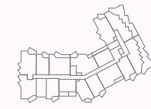
PURBECK APARTMENTS



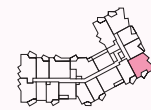
10TH FLOOR



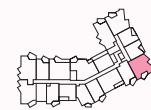
9TH FLOOR



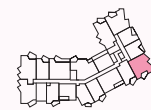
8TH FLOOR



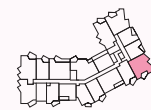
7TH FLOOR



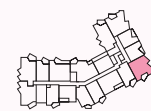
6TH FLOOR



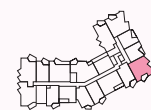
5TH FLOOR



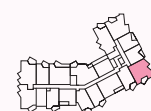
4TH FLOOR



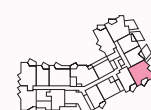
3RD FLOOR



2ND FLOOR



1ST FLOOR



GROUND FLOOR

Plots 117, 124, 131, 138, 145, 152, 159, 164

2 BEDROOM | TYPE 2B.7



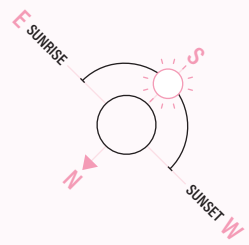
Measurements

Living / Kitchen / Dining	6.7 m x 5.1 m	21'11" x 16'10"
Bedroom 1	5.8 m x 2.7 m	19'1" x 9'
Bedroom 2	4.6 m x 2.9 m	15'3" x 9'8"
Winter Garden	7.0 sq m	75.3 sq ft
Total Internal Area	80.8 sq m	870 sq ft

Balcony and Winter Garden sizes vary from plot to plot.

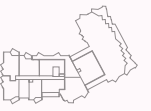
◀ ▶ Measurement Points S Storage W Fitted Wardrobe H Heating

All areas and dimensions have been taken from architect plans prior to construction, therefore whilst the information is believed to be correct its accuracy cannot be guaranteed and does not form part of any contract. They are not intended to be used for carpet sizes or items of furniture. Purchasers must therefore rely on their own inspection to verify any information provided. All dimensions are within + or - 50mm.

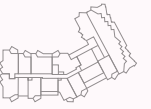


PLOT LOCATORS

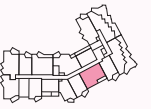
PURBECK APARTMENTS



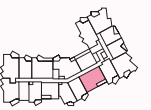
10TH FLOOR



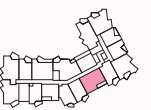
9TH FLOOR



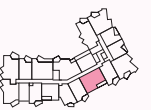
8TH FLOOR



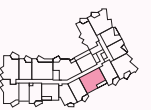
7TH FLOOR



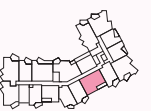
6TH FLOOR



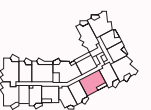
5TH FLOOR



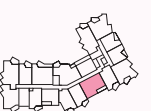
4TH FLOOR



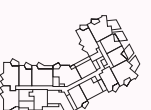
3RD FLOOR



2ND FLOOR



1ST FLOOR



GROUND FLOOR

Plot 161

2 BEDROOM | TYPE 2B.13

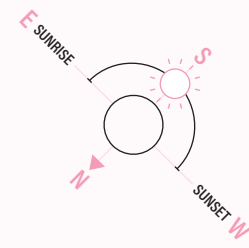


Measurements

Living / Kitchen / Dining	9.0 m x 5.2 m	29'7" x 17'4"
Bedroom 1	4.5 m x 4.1 m	14'10" x 13'8"
Bedroom 2	3.8 m x 3.6 m	12'8" x 12'1"
Total Internal Area	83.5 sq m	899 sq ft

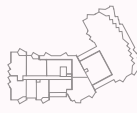
◀ ▶ Measurement Points S Storage W Fitted Wardrobe H Heating

All areas and dimensions have been taken from architect plans prior to construction, therefore whilst the information is believed to be correct its accuracy cannot be guaranteed and does not form part of any contract. They are not intended to be used for carpet sizes or items of furniture. Purchasers must therefore rely on their own inspection to verify any information provided. All dimensions are within + or - 50mm.

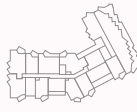


PLOT LOCATORS

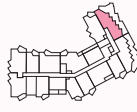
PURBECK APARTMENTS



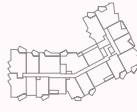
10TH FLOOR



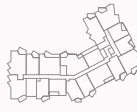
9TH FLOOR



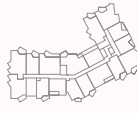
8TH FLOOR



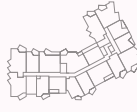
7TH FLOOR



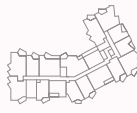
6TH FLOOR



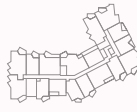
5TH FLOOR



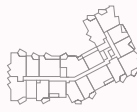
4TH FLOOR



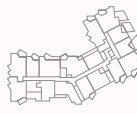
3RD FLOOR



2ND FLOOR



1ST FLOOR



GROUND FLOOR

Plot 162

2 BEDROOM | TYPE 2B.8

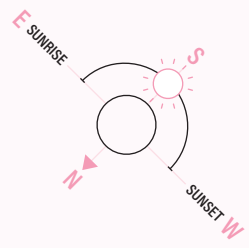


Measurements

Living / Kitchen / Dining	7.4 m x 5.9 m	24'6" x 19'6"
Bedroom 1	4.5 m x 4.1 m	14'10" x 13'8"
Bedroom 2	3.8 m x 3.6 m	12'8" x 12'1"
Total Internal Area	83.5 sq m	899 sq ft

◀ ▶ Measurement Points S Storage W Fitted Wardrobe H Heating

All areas and dimensions have been taken from architect plans prior to construction, therefore whilst the information is believed to be correct its accuracy cannot be guaranteed and does not form part of any contract. They are not intended to be used for carpet sizes or items of furniture. Purchasers must therefore rely on their own inspection to verify any information provided. All dimensions are within + or - 50mm.

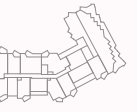


PLOT LOCATORS

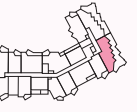
PURBECK APARTMENTS



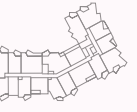
10TH FLOOR



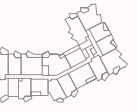
9TH FLOOR



8TH FLOOR



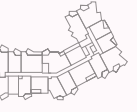
7TH FLOOR



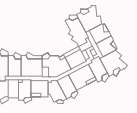
6TH FLOOR



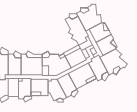
5TH FLOOR



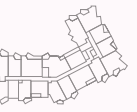
4TH FLOOR



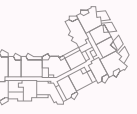
3RD FLOOR



2ND FLOOR



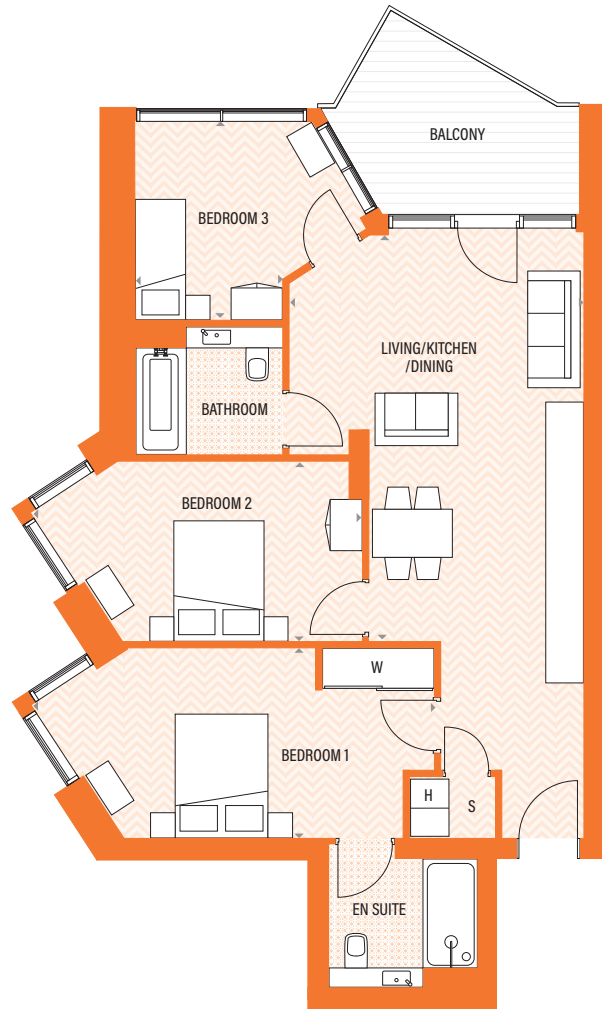
1ST FLOOR



GROUND FLOOR

Plots 2*, 6, 11, 16, 21, 26, 31, 36, 41, 46, 51

3 BEDROOM | TYPE 3B.1



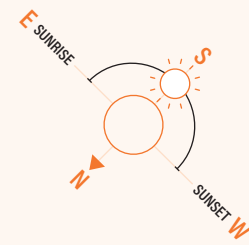
Measurements

Living / Kitchen / Dining	6.8 m x 4.6 m	22'3" x 15'
Bedroom 1	6.4 m x 3.0 m	20'9" x 9'8"
Bedroom 2	5.3 m x 2.9 m	17'4" x 9'5"
Bedroom 3	3.6 m x 3.1 m	11'8" x 10'1"
Total Internal Area	87.2 sq m	939 sq ft

Balcony and Winter Garden sizes vary from plot to plot.

◀ ▶ Measurement Points S Storage W Fitted Wardrobe H Heating

All areas and dimensions have been taken from architect plans prior to construction, therefore whilst the information is believed to be correct its accuracy cannot be guaranteed and does not form part of any contract. They are not intended to be used for carpet sizes or items of furniture. Purchasers must therefore rely on their own inspection to verify any information provided. All dimensions are within + or - 50mm.

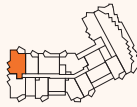


PLOT LOCATORS

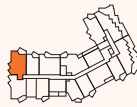
PURBECK APARTMENTS



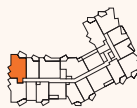
10TH FLOOR



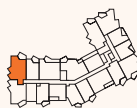
9TH FLOOR



8TH FLOOR



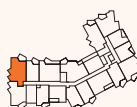
7TH FLOOR



6TH FLOOR



5TH FLOOR



4TH FLOOR



3RD FLOOR



2ND FLOOR



1ST FLOOR



GROUND FLOOR

Our COMMITMENT to our CUSTOMERS

The entire Weston Homes team is committed to providing you, our customers, with quality homes.

We are working to achieve one common goal: to ensure that you are satisfied and happy with your new home, from the moment that you make your reservation, to the day you move in and beyond. No matter who you are dealing with, or what queries, questions, or complaints you may have, you can be confident that our people and procedures will adhere to the terms of our customer charter and the 'New Homes Quality Code'.

Copies of the 'New Homes Quality Code' are available from our Marketing Suites and via our website; a copy (also identifying where further guidance can be found) will always be provided to you upon reservation. Our customer care begins at the outset, with our trained Sales Consultants who offer guidance on the legal process involved in buying a home and help with arranging mortgage finance through independent mortgage brokers.



Your home will come with a 10-YEAR NHBC BUILDMARK policy which includes:



Deposit protection from exchange of contracts.



A two-year builder warranty from legal completion directly with Weston Homes, backed by NHBC's resolution service.



Eight years of structural defects insurance cover.

For more details, please visit www.NHBC.co.uk/homeowners. Each property is quality checked and commissioned by our dedicated Customer Service team before handover to its new owner.



Voted **BRITAIN'S BEST HOUSEBUILDER** Defining Excellence in Homebuilding

At Weston Homes, we build with passion and deliver with pride. A privately owned family company, we live by a vision to create and construct homes and communities for tomorrow. That dedication was recognised in 2025 with an incredible haul of industry awards, cementing our reputation as one of the UK's leading developers.

We were thrilled to be named **Housebuilder of the Year** at the prestigious **2025 WhatHouse? Awards**. Often called the 'Oscars' of the industry, this top honour is a testament to our commitment to quality, innovation and our customers.

Because we design with you in mind, we are especially proud to have been voted **Private Developer of the Year** at the **First Time Buyer Readers' Awards 2025** for the fourth consecutive year, celebrating our mission to make the dream of homeownership a reality for everyone.

When you choose Weston Homes, you aren't just buying a home; you're investing in an award-winning housebuilder backed by a team dedicated to excellence.



Best Medium Housebuilder



Best Starter Home Scheme
Abbey Quay, Barking



Best Energy Efficient Home
Thornwood Park, Epping



Best Sustainable Development
Thornwood Park, Epping

About **US**

Weston Homes was formed in 1987 by Bob Weston, establishing what has now become one of the major property developers in the South East of England.

Weston Homes has established a reputation for high quality design and build standards, delivered with a passionate desire to make a genuine difference to the lives of our customers and to leave a legacy of which we are justly proud. Continually re-assessing the marketplace, Weston Homes has combined the traditional skills of housebuilding with the ever-expanding opportunities created by new technology.

The company has taken a revolutionary approach to property development - many of our properties' components are now pre-manufactured and tested in our own carefully controlled Weston Group factory, rather than on site. This enables the efficient fitting at a late stage of construction for fixtures such as kitchen worktops, wardrobes and bathroom vanity units which incorporate bespoke basins, storage cabinets and associated plumbing. This minimises wasted materials whilst maximising the quality of your brand-new home.

Built with **PASSION,** delivered with **PRIDE**

Weston Homes provides properties to exceed the expectations of purchasers both in terms of quality and value for money. Projects are hugely varied, ranging from select housing developments to large-scale city apartment complexes with many hundreds of homes. As well as new build, the company has extensive experience of refurbishment and restoration work, breathing new life into historic and Listed buildings to give new purpose to Britain's architectural heritage.



ABBEY QUAY, BARKING



GUN HILL PARK, ALDERSHOT



Please Note:

- (i) The particulars are set out as a general outline only for the guidance of intending purchasers or lessees and do not constitute, nor constitute part of, an offer or contract.
- (ii) All descriptions, dimensions, references to condition and necessary permissions for use and occupation, and other details are given without responsibilities and any intending purchasers or tenants should not rely on them as statements or representations of fact but must satisfy themselves by inspection or otherwise as to the correctness of each of them. The information contained in this brochure is for guidance only. Weston Homes Plc operates a policy of continuous product development and features may therefore vary from time to time. Floor plans and dimensions can only be given as a guide and are indicative of the type only. The computer generated images, floor plans, configuration and layouts are included for guidance only, please refer to drawings in sales suite. It should be noted that the representations of Dylon Riverside may not necessarily be accurate in every respect.

These particulars should not be relied on as accurately describing any of the specific matters described by any order under the Consumer Protection from Unfair Trading Regulations (2008). This information does not constitute a contract of warranty. All details correct at time of going to print. Dylon Riverside is the marketing name for use until a permanent postal address has been issued.

Sources for travel times: Google Maps and Transport for London

[WESTON-HOMES.COM](https://www.weston-homes.com)

SALES AND MARKETING SUITE

Dylon Riverside
Purbeck Gardens
London
SE26 5FH





dylon
riverside

Sydenham | SE26