



## CATHEDRAL MANSIONS, SW1V

£415 per week

A fantastically light and airy studio apartment set on the fourth floor (with a lift) of this lovely red brick mansion building moments from Victoria Station. The apartment is well presented comprising a well-proportioned

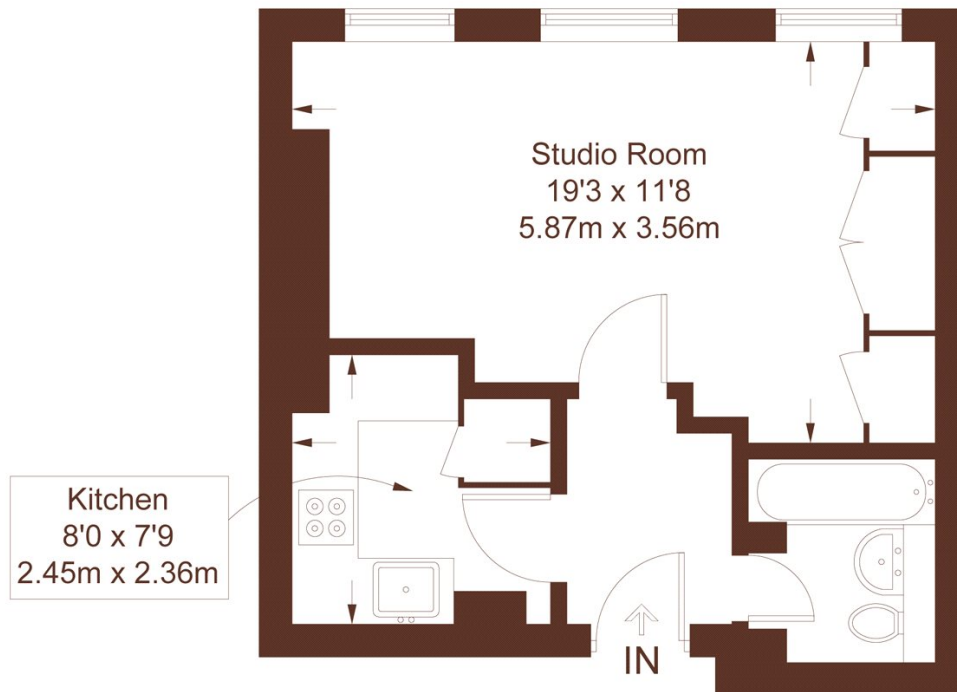
Natural light  
Red brick mansion  
Lift

Furnished  
Spacious  
Energy rating: d

# STEP INSIDE CATHEDRAL MANSIONS

## Cathedral Mansions

Approximate Gross Internal Area = 341 sq ft / 31.7 sq m



## Fourth Floor

Not to scale, for guidance only and must not be relied upon as a statement of fact.  
All measurements and areas are approximate only and have been prepared in accordance with the current edition of the RICS Code of Measuring Practice.

Pimlico & Westminster  
020 7828 8100

Energy Rating: D We aim to make our particulars both accurate and reliable. However, they are not guaranteed; nor do they form part of an offer or contract. If you require clarification on any points then please contact us, especially if you're traveling some distance to view. Please note that appliances and heating systems have not been tested and therefore no warranties can be given as to their good working order.

MARSH &  
PARSONS