



Jeffreys Road, SW4

£490,000

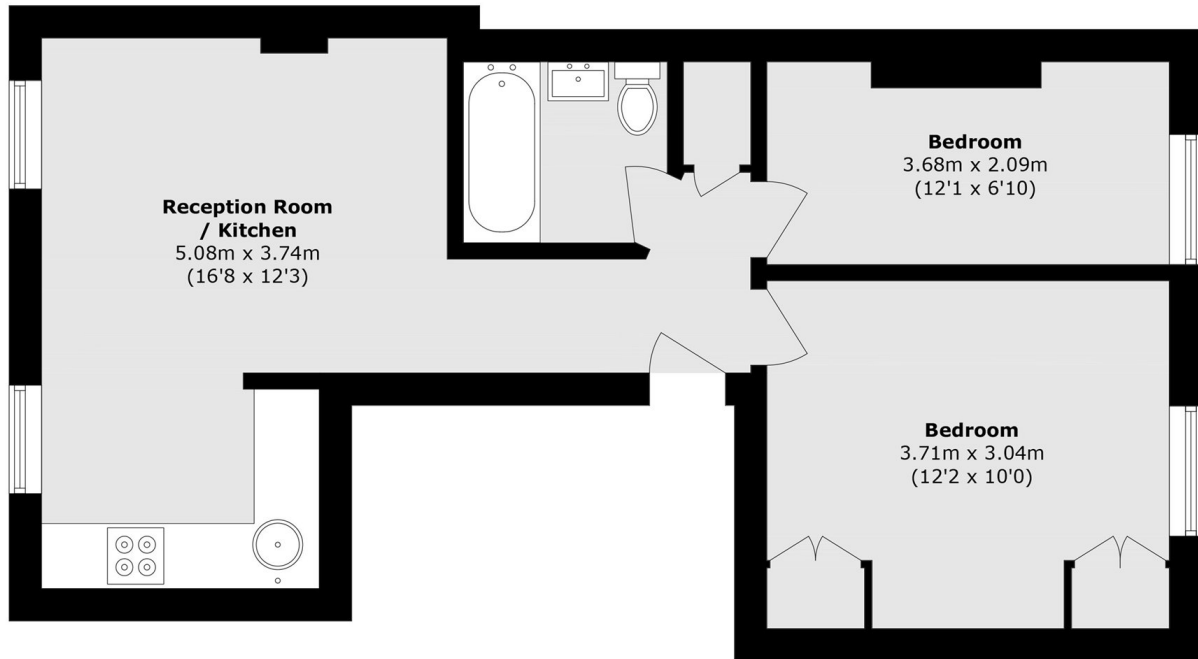
A superb two bedroom apartment set on the first floor of an attractive period building on the sought after Jeffrey's Road. Beautifully presented throughout, the property comprises a bright and spacious open plan reception room with a fully fitted kitchen, two well-proportioned double bedrooms, and a generous modern bathroom. The flat further benefits from excellent storage, including built-in wardrobes in both bedrooms and useful loft storage.

Jeffreys Road is a quiet and highly desirable residential street, ideally positioned between the vibrant amenities of Clapham High Street and Vauxhall. Residents benefit from an excellent selection of cafés, restaurants, bars, and local shops, as well as superb transport connections. Clapham North Underground Station (Northern Line) and Stockwell Underground Station (Northern and Victoria Lines) are both within easy reach, providing swift access to the City, West End, and beyond.

Features

Period Conversation
First Floor
Two Bedroom

Jeffreys Road, London, SW4



Total area (approx.): 44.5 sq. m (478.9 sq. ft)