



The Green, TW2

£1,450 Per calendar month

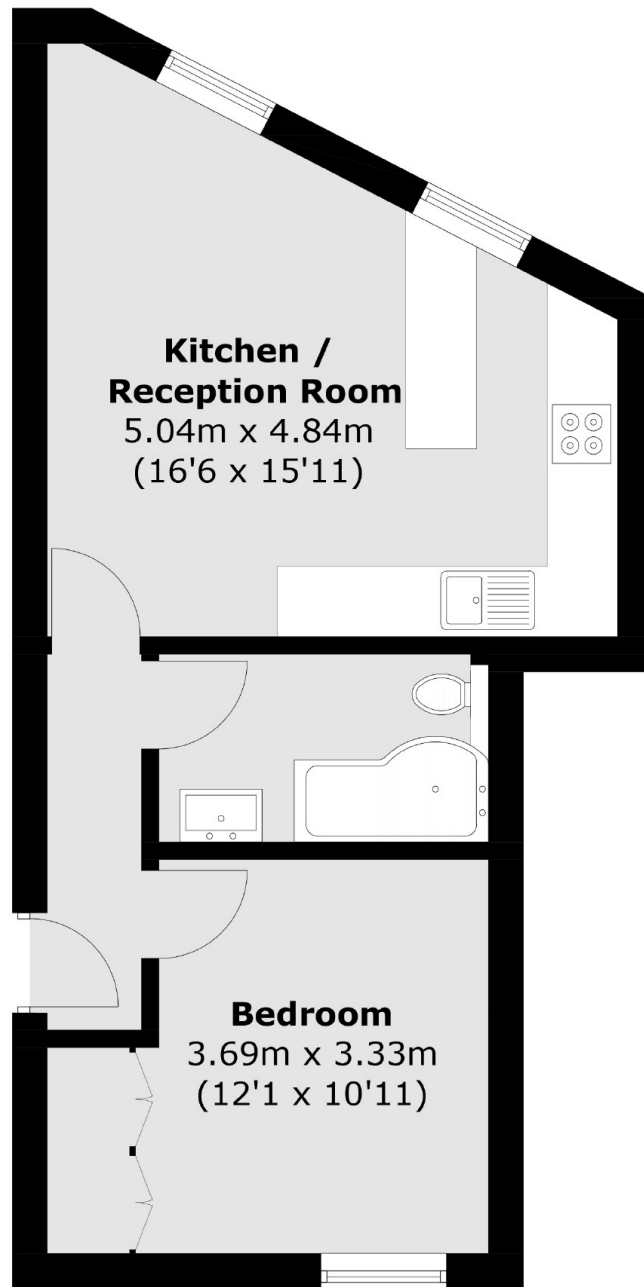
This delightful apartment overlooks Twickenham Green and offers a large double bedroom to the rear with built-in storage, an open plan lounge with a modern fitted kitchen and a large bathroom.

Positioned directly on Twickenham Green, this property is just moments from excellent local amenities, some of the areas best schools and fantastic transport links.

Features

- One Bedroom
- Open Plan Living
- Stylish Living
- Period Features
- Great Location
- Views Over The Green

The Green, Twickenham, TW2



Total area (approx.): 39.0 sq. m (419.7 sq. ft)