



## Park Road, TW11

£1,195 Per calendar month

This studio is set within this wonderful period property and has an open plan living room with a Juliette balcony.

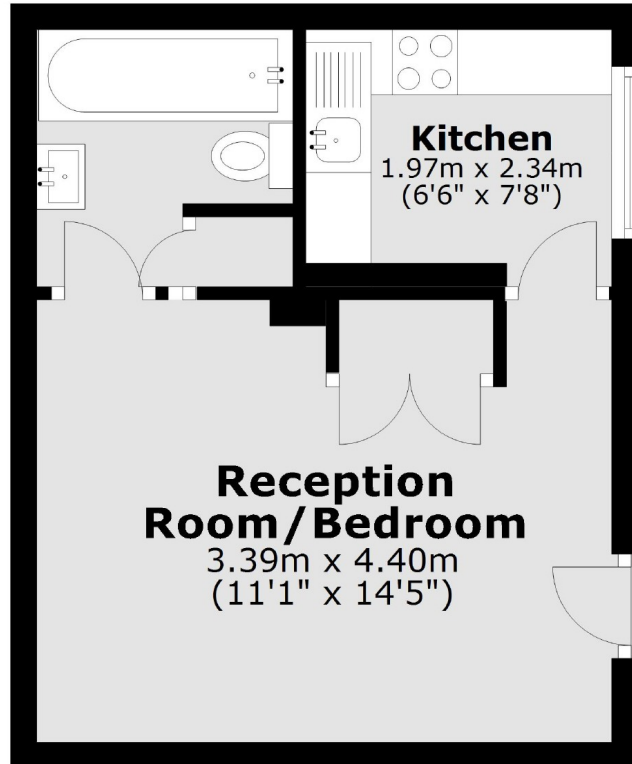
Park Road is an excellent location for transport links and access to the High Street. Bushy Park is opposite with a weekly park run and Kingston Town Centre is also within easy reach.

### Features

- Studio Apartment
- Private Entrance
- Period Conversion
- Separate Kitchen
- Central Location
- Good Condition

**Park Road,  
Teddington, TW11**

## **Ground Floor**



Total area: approx. 24.0 sq. metres (258.8 sq. feet)