



A well presented two bedroom apartment set within an exclusive development  
Rickmansworth Road, Northwood, HA6 2HE

**ROBSONS**

**Asking Price: £2,200 pcm**

## **A well presented two bedroom apartment set within an exclusive development**

Rickmansworth Road, Northwood, HA6 2HE

---

- EXCLUSIVE MODERN DEVELOPMENT
- SECOND FLOOR with LIFT ACCESS
- ENTRANCE HALL
- MASTER BEDROOM with ENSUITE BATHROOM
- OPEN PLAN LIVING ROOM/KITCHEN
- SECOND BEDROOM
- FAMILY BATHROOM
- INTERCOM ENTRY SYSTEM
- ALLOCATED UNDERGROUND PARKING
- COMMUNAL GARDENS
- UNFURNISHED

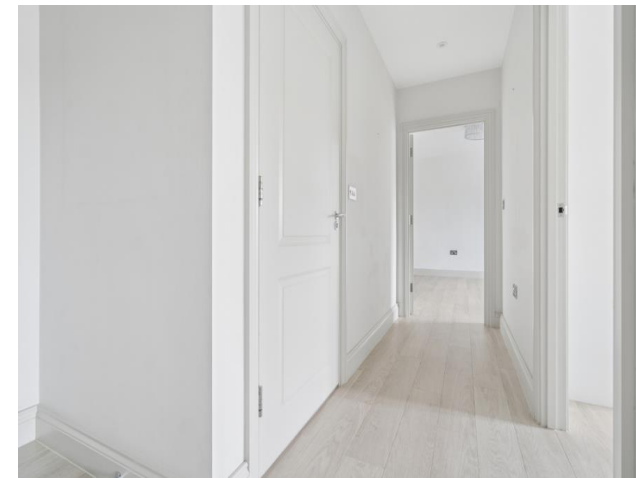
---

### **Description**

A well-presented two-bedroom, two-bathroom flat in the Woodchester Court development in Northwood. Offered in good condition throughout, the property features a bright open-plan living and dining area and a modern fitted kitchen. Both bedrooms are well-proportioned, with the principal bedroom benefiting from an en-suite, alongside a stylish family bathroom. Ideally located close to local amenities, transport links, and green spaces. \* To secure this property an advance payment of one weeks rent is required\*

### **Location**

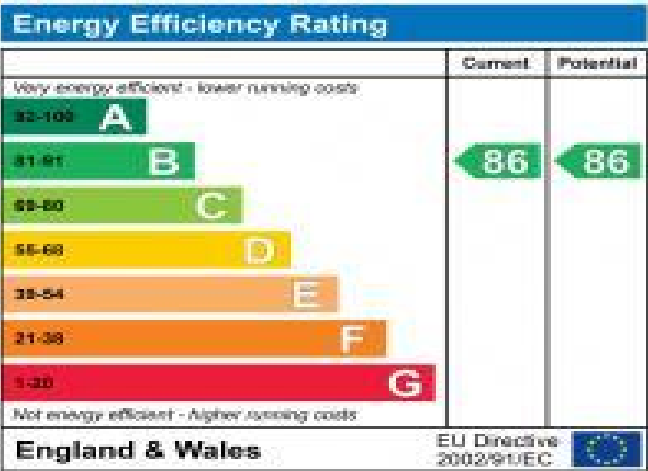
Northwood provides a range of shopping facilities, a Waitrose supermarket, restaurants and the Metropolitan Line Station providing access to Baker Street and the city beyond. The area has a range of both private and state schools. Places of worship and recreational facilities are also well catered for in the surrounding area and major motorway links to M25 and M1 are nearby.





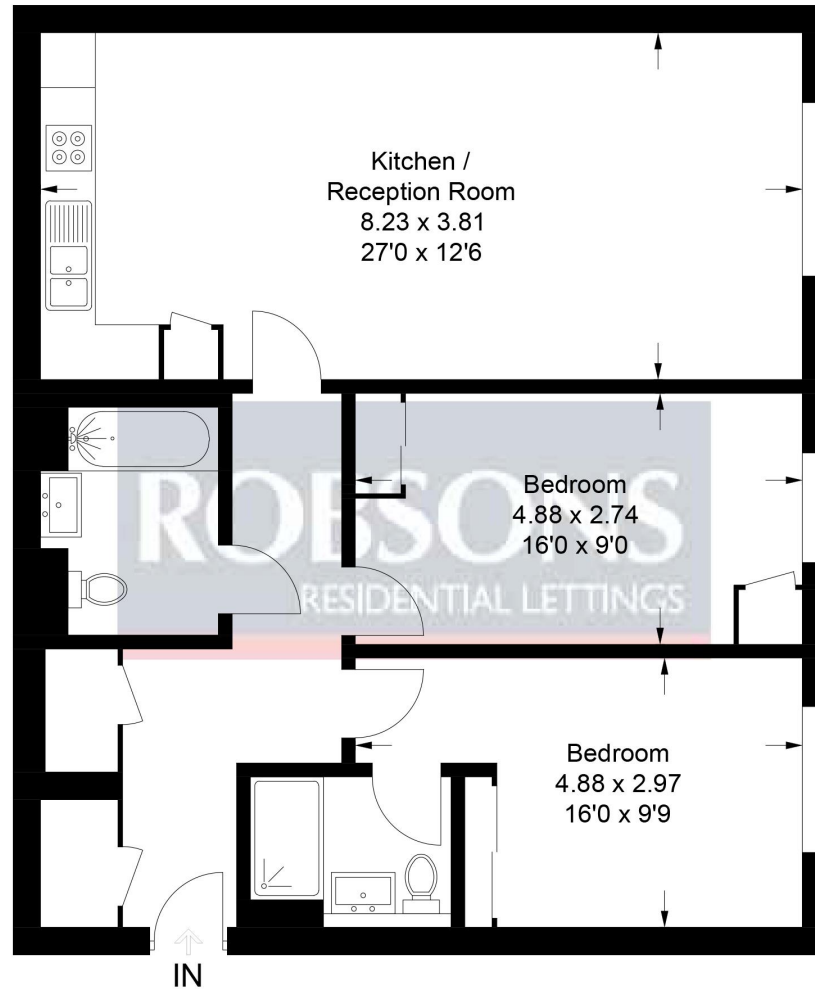
**Additional Information**

- Local Authority: Hillingdon
- Council Tax Band: E
- Deposit Amount: £2,538.00
- Reservation Payment: One weeks rent
- Energy Efficiency Rating: Band B
- Available Date: 07/04/2026



# 18 Woodchester Court

Approximate Gross Internal Area = 81.9 sq m / 881 sq ft



This plan is for layout guidance only. Not drawn to scale unless stated. Windows and door openings are approximate. Whilst every care is taken in the preparation of this plan, please check all dimensions, shapes and compass bearings before making any decisions reliant upon them.  
© CJ Property Marketing Ltd Produced for Robsons



REGISTERED OFFICE 2-4 PACKHORSE ROAD, GERRARDS CROSS, BUCKINGHAMSHIRE, ENGLAND, SL9 7QE. COMPANY NO. 07557114. VAT NO. GB211239453