



HONEYWOOD ROAD, NW10

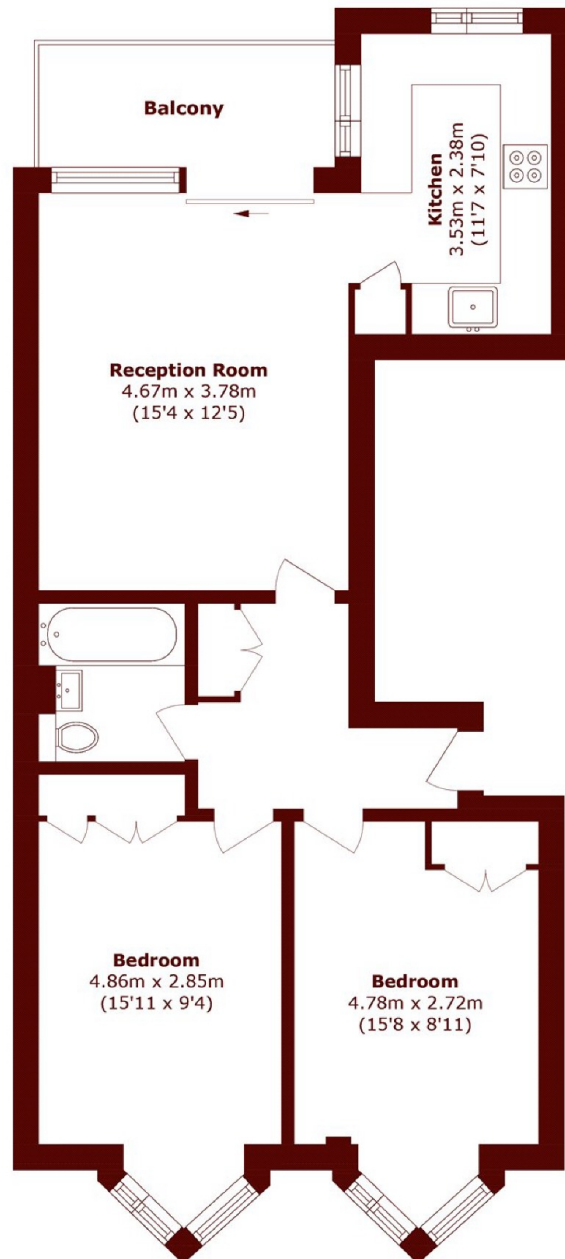
£400,000

This superb, two-bedroom apartment is ideally located on the first floor of a boutique development, arranged over 655sqft comprising a spacious, open plan kitchen/reception with direct access to a private balcony, two

Two Bedrooms
Private Balcony
Modern Development

Great Transport Links
Lots Of Natural Light
First Floor

STEP INSIDE HONEYWOOD ROAD



Total area (approx.): 60.9 sq. m (655.5 sq. ft)
Balcony area (approx.): 5.2 sq. m (55.9 sq. ft)

Willesden Green
020 8451 0420

Energy Rating: B We aim to make our particulars both accurate and reliable. However, they are not guaranteed; nor do they form part of an offer or contract. If you require clarification on any points then please contact us, especially if you're traveling some distance to view. Please note that appliances and heating systems have not been tested and therefore no warranties can be given as to their good working order

**MARSH &
PARSONS**