



## Cleaveland Road, KT6

£500,000

A unique and immaculately presented freehold house nestled behind stable doors. This one of a kind property is full of character and thought to be the old stables for the workman's cottages built in the mid 1800's.

Cleaveland Road is one of Surbiton's premier river roads with everything you need on your doorstep, including the River Thames, the desirable Maple Road, Surbiton's popular high street and the mainline train station with it's fast links into London.

### Features

- Freehold House
- One Double Bedroom
- Immaculately Presented
- Courtyard
- River Road Location
- Juliet Balcony



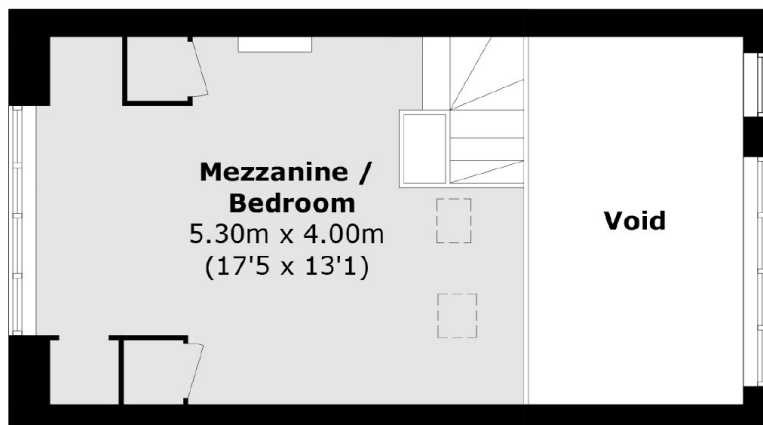
## Cleaveland Road, KT6

Upon entering through the stable doors there is a partly covered courtyard perfect for hosting, exercising or relaxing. There is also a large storage cupboard which doubles up as a utility cupboard.

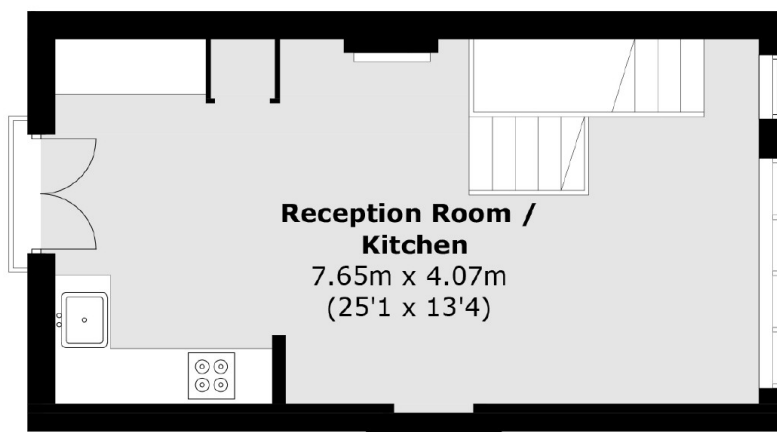
On the ground floor there is a smart and contemporary bathroom suite. On the first floor there is an open plan modern kitchen/reception room, with exposed brick walls, log burner and Juliet Balcony. Upstairs on the second floor there is a dual aspect double bedroom with exposed beams and ample storage.



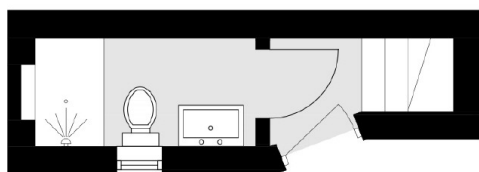
# Cleaveland Road, Surbiton, KT6



**Mezzanine**



**First Floor**



**Ground Floor**

Total area (approx.): 56.7 sq. m (610.3 sq. ft)  
(Including Mezzanine / Excluding Void)