



**Connells**

Stonehenge Road  
Durrington SALISBURY





## Property Description

This high specification bungalow in the heart of Durrington offers a sitting room with log burner, stylish kitchen/dining room, two double bedrooms and shower room. At the front of the bungalow there is a driveway and a large rear garden with a lovely patio and decorative stone is to the rear, This beautiful mature garden also has an open aspect. Durrington itself offers many amenities, including two supermarkets, a doctors surgery, petrol station and leisure centre with pool. The A303 and Salisbury are just minutes away.

## Living Room

Windows to front aspect with dual fireplace and log burner.

## Kitchen/Diner

Newly fitted kitchen with a range of wall and base units, Belfast sink with mixer tap, built in oven, hob with cooker hood, integrated dishwasher and integrated fridge/freezer, windows side and rear aspect, storage cupboard, fireplace with log burner and door to patio section of the rear garden.

## Bedroom One

Double bedroom with window to front aspect

## Bedroom Two

Double bedroom with window to side aspect

## Shower Room

Modern shower room comprising of shower cubicle, vanity style wash hand basin, W.C, rear window aspect

## Rear Garden

A large rear garden with large patio area and an open aspect.

## Driveway

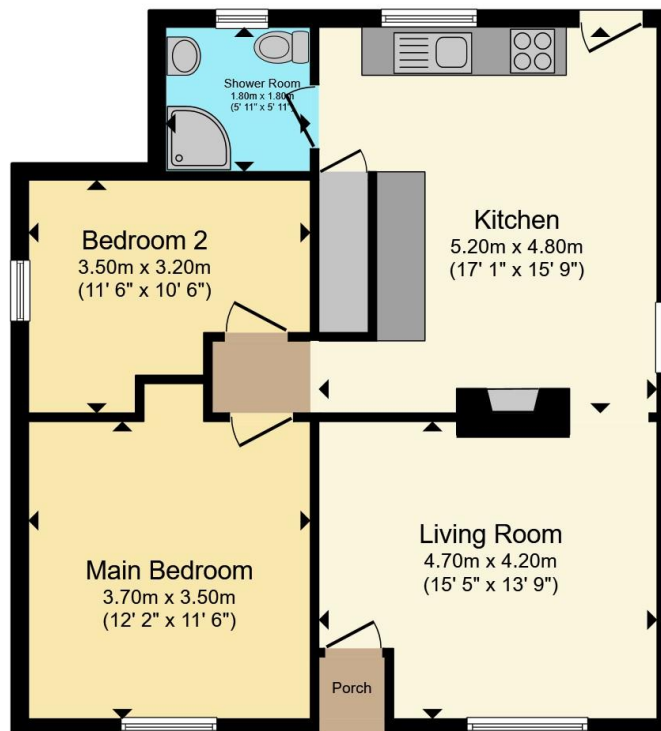












Total floor area 63.8 m<sup>2</sup> (687 sq.ft.) approx

This floor plan is for illustrative purposes only. It is not drawn to scale. Any measurements, floor areas (including any total floor area), openings and orientation are approximate. No details are guaranteed, they cannot be relied upon for any purpose and they do not form part of any agreement. No liability is taken for any error, omission or misstatement. A party must rely upon its own inspection(s). Powered by [www.propertybox.io](http://www.propertybox.io)

**Connells**

To view this property please contact Connells on

**T 01980 622 662**  
**E [amesbury@connells.co.uk](mailto:amesbury@connells.co.uk)**

Unit 3 23 Salisbury Street AMESBURY  
 SALISBURY SP4 7AW

EPC Rating: D Council Tax  
 Band: D

Tenure: Freehold

**view this property online [connells.co.uk/Property/ABY308504](http://connells.co.uk/Property/ABY308504)**



1. MONEY LAUNDERING REGULATIONS Intending purchasers will be asked to produce identification documentation at a later stage and we would ask for your co-operation in order that there will be no delay in agreeing the sale. 2. These particulars do not constitute part or all of an offer or contract. 3. The measurements indicated are supplied for guidance only and as such must be considered incorrect. Potential buyers are advised to recheck measurements before committing to any expense. 4. We have not tested any apparatus, equipment, fixtures, fittings or services and it is in the buyers interest to check the working condition of any appliances.

Connells Residential is registered in England and Wales under company number 1489613, Registered Office is Cumbria House, 16-20 Hockliffe Street, Leighton Buzzard, Bedfordshire, LU7 1GN. VAT Registration Number is 500 2481 05.

**See all our properties at [www.connells.co.uk](http://www.connells.co.uk) | [www.rightmove.co.uk](http://www.rightmove.co.uk) | [www.zoopla.co.uk](http://www.zoopla.co.uk)**

Property Ref: ABY308504 - 0010