



## Beards Hill, TW12

£335,000

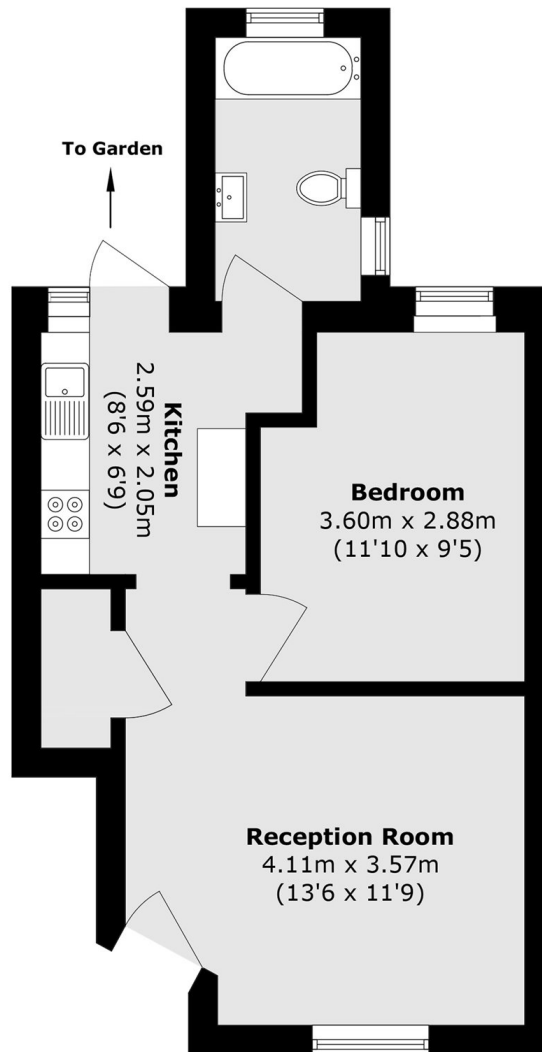
A pretty, one bedroom Victorian, ground floor maisonette that comes with a private garden. This would be perfectly suited to a downsizer, investor or first time buyer.

Found just off Oldfield Road, Beards Hill is an ideal location - minutes walk to the local shops, the train station, and Hampton Green at the heart of the village, with Bushy Park also nearby.

### Features

- One Bedroom
- Ground Floor Maisonette
- Victorian
- Private Garden
- Central Location
- Cul De Sac

# Beards Hill, Hampton, TW12



Total area (approx.): 37.4 sq. m (402.5 sq. ft)