



118 The Avenue

, Middlesbrough, TS5 6RT

£275,000



Igomove are delighted to offer to the market this exclusive four bedroom, three storey, semi-detached property, situated within the much sought after and popular residential area in Linthorpe. Meticulously refurbished and modernised, this property ensures a fresh and timeless living space ready to welcome its new owners. Boasting originality such as high ceilings and large rooms, this perfect home will certainly appeal to an array of buyers looking for a property boasting uniqueness and character.



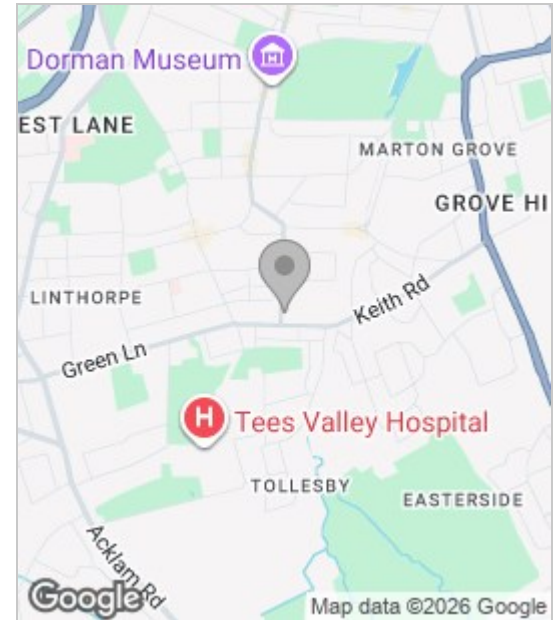
This home is in a category entirely of its own and is possessed of a truly unique personality which is obvious upon arrival where you are greeted into the spacious entrance leading you into generously sized dining room. The interconnected lounge is invitingly comfortable featuring a bow window, maximising sunlight throughout the day as well as a log burning fire for those cozy nights in. The dining room features French doors that lead into the pristine and modern kitchen. This space is a cooking haven having ample space for appliances as well as benefiting from a range of built in appliances.

Moving upstairs are three well proportioned bedrooms that are beautifully styled in their own way. The master bedroom, to front aspect is highly spacious and flooded with natural light. Bedroom two, to the rear is of generous size as well as the third creating a generous single room. Completing the first floor is the extended and tastefully decorated shower room featuring a walk in shower, fitted bath, wash basin and WC.

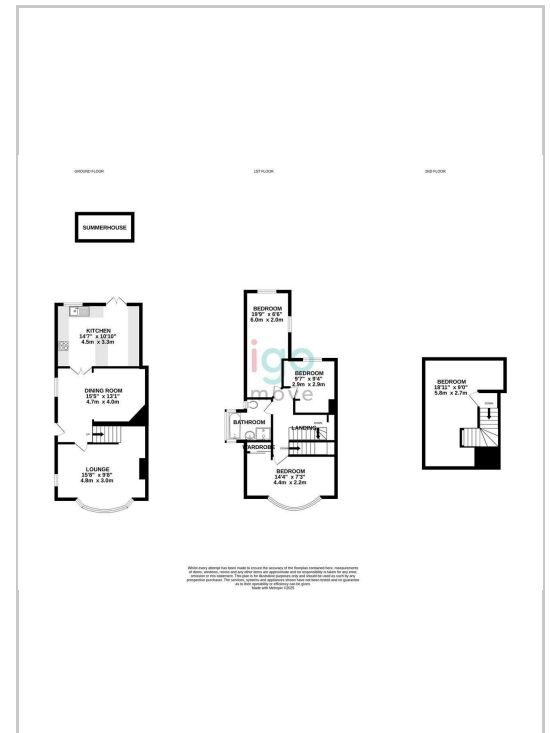
The second floor is home to an additional bedroom with ample living space, flooded with natural light.

Externally, this spectacular home boasts a spacious, garden which makes an ideal entertaining space for a growing family. A versatile summer house is also located to rear. The front of the property boasts an extensive block paved private driveway offering ample parking and side gated access. Make this exceptional home your own and book your viewing today. Igomove are open 7 days a week.

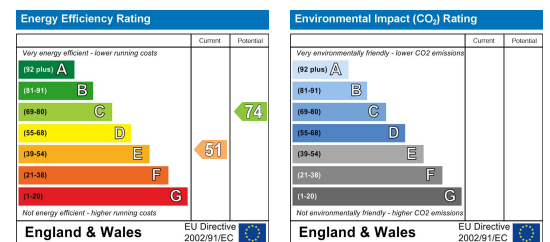
Area Map



Floor Plan



Energy Efficiency Graph



These particulars, whilst believed to be accurate are set out as a general outline only for guidance and do not constitute any part of an offer or contract. Intending purchasers should not rely on them as statements of representation of fact, but must satisfy themselves by inspection or otherwise as to their accuracy. No person in this firm's employment has the authority to make or give any representation or warranty in respect of the property.