



63 Kings Meade  
Coleford, GL16 8RS  
£185,000



# 63 Kings Meade, Coleford, GL16 8RS

A well-presented semi-detached bungalow, forming part of a popular development for the over 55's, conveniently situated within walking distance of Coleford town centre. The accommodation comprises a spacious lounge, fitted kitchen, two bedrooms and a modern shower room, offering comfortable and low-maintenance living throughout.

Coleford town centre provides a wide range of amenities including doctors' surgeries, supermarkets, independent shops and cafés, a library, cinema and restaurants.

Ideal for those seeking independent living within a friendly and supportive community, whilst still enjoying easy access to excellent local amenities and transport links.

## Area Map



Approached via front door into:

Entrance Hallway:

6'2" x 3'8" (1.88m x 1.14m)

Kitchen:

9'3" x 7'10" (2.83m x 2.39m)

Lounge:

9'11" x 15'1" (3.03m x 4.60m)

Bedroom One:

9'11" x 10'6" (3.03m x 3.21m)



Bedroom Two:

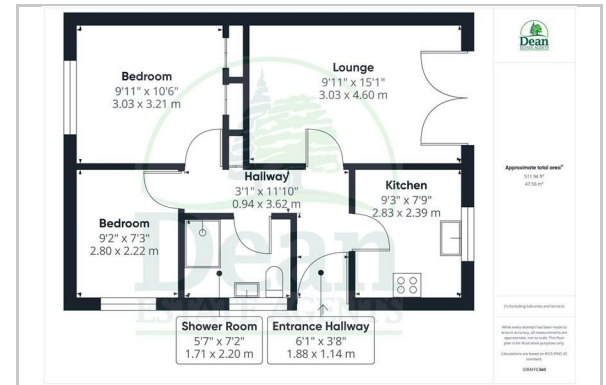
9'2" x 7'3" (2.80m x 2.22m)

Shower Room:

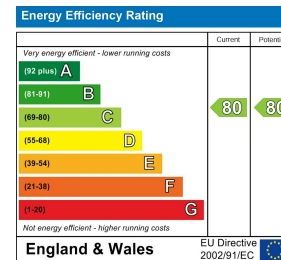
5'7" x 7'3" (1.71m x 2.22m)

Outside:

## Floor Plan



## Energy Efficiency Graph



These particulars, whilst believed to be accurate are set out as a general outline only for guidance and do not constitute any part of an offer or contract. Intending purchasers should not rely on them as statements of representation of fact, but must satisfy themselves by inspection or otherwise as to their accuracy. No person in this firm's employment has the authority to make or give any representation or warranty in respect of the property.