

RAINBOW REID



ESTATE AGENTS || LETTING AGENTS || PROPERTY MANAGEMENT



20 Chichele Road , London, NW2 3DA

****CURRENTLY UNDERGOING EXTENSIVE REFURBISHMENT, FURTHER PHOTOS TO FOLLOW****

Located on the sought after Chichele Road is this extremely spacious, period conversion first floor flat.

Measuring approximately 764 SQFT the property in full comprises: a brand new kitchen being fitted to create a open plan kitchen/dining area, a spacious bay fronted living living room, two double bedrooms and a modern bathroom.

Additionally, the property is being re-painted and is having large floor tiles fitted between the kitchen/dining area and lounge to create a seamless flow through the two spaces.

The works are due to be complete towards the end of March and the property is available to secure immediately, don't miss this opportunity to move in to a fresh, spacious, modern apartment in a sought after location.

Residents will benefit from being close to a variety of shops, cafes and restaurants within a few minutes walk. Additionally, excellent transport links nearby include Willesden Green tube (0.5 miles - Zone 2 Jubilee Line)

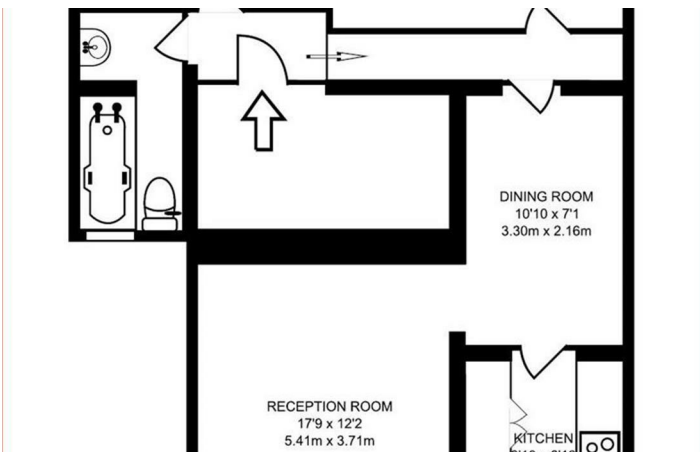
£2,000

20 Chichele Road

, London, NW2 3DA



Directions





Floor Plan

These particulars, whilst believed to be accurate are set out as a general outline only for guidance and do not constitute any part of an offer or contract. Intending purchasers should not rely on them as statements of representation of fact, but must satisfy themselves by inspection or otherwise as to their accuracy. No person in this firm's employment has the authority to make or give any representation or warranty in respect of the property.

