



Seymour Place, W1H

£2,491 Per calendar month

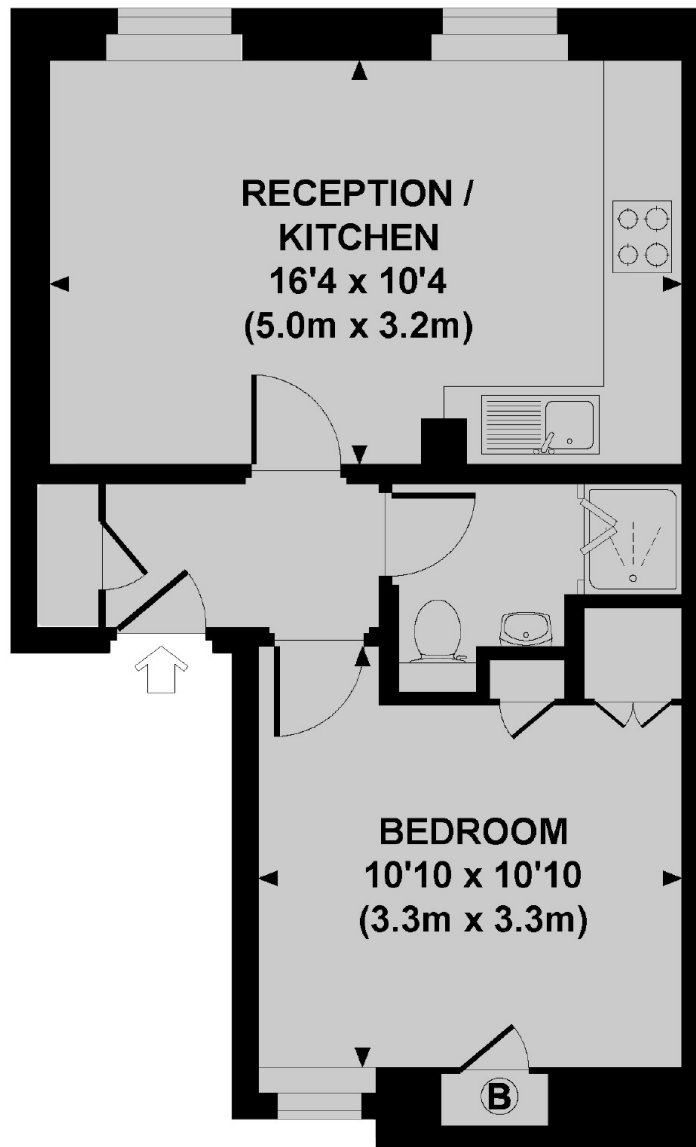
A bright one bedroom apartment on the second floor of a period building in Marylebone. The apartment has wooden flooring, and a modern open plan reception room.

Seymour Place is surrounded by boutique shops, cafés and restaurants in The Portman Village.

Features

- One Bedroom
- One Bathroom
- Second Floor
- Wood Flooring
- Open Plan
- The Portman Estate

Seymour Place, London, W1H



SECOND FLOOR

Approx. gross internal area
363 Sq Ft. / 33.7 Sq M.

Dexters

Marylebone
53-55 Weymouth Street
London
W1G 8NJ
Lettings
0207 224 5545

Energy Rating: C. We aim to make our particulars both accurate and reliable. However they are not guaranteed; nor do they form part of an offer or contract. If you require clarification on any points then please contact us, especially if you're traveling some distance to view. Please note that appliances and heating systems have not been tested and therefore no warranties can be given as to their good working order.

 **RICS** | Regulated
Estate Agent
and Letting Agent

dexters.co.uk