



The Meadows, Flitwick  
£225,000



## The Meadows, Flitwick

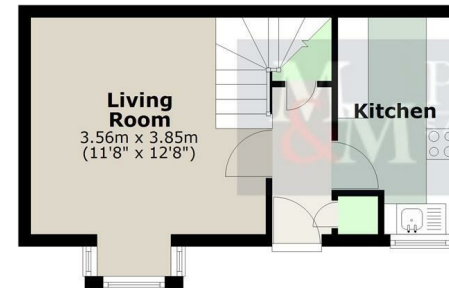
- Two-bedroom cluster house
- Located in the popular Meadows area of Flitwick
- Approximately 1.0 mile from Flitwick train station
- Direct train services to London St Pancras International
- Ideal first-time buy, downsize or investment purchase
- Entrance hallway with practical ground floor layout
- Fitted kitchen and separate living room
- Useful under-stairs storage
- Family bathroom to the first floor
- One allocated parking space directly in front of the property



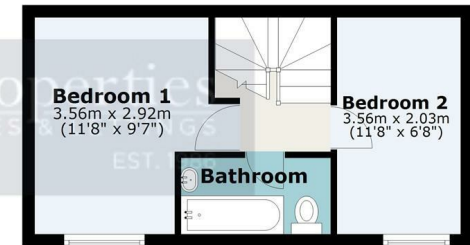
### Floor Plan



Ground Floor



First Floor



### Viewing

Please contact our Leighton Buzzard Office on 01525 377733.

If you wish to arrange a viewing appointment for this property or require further information.

IMPORTANT: Whilst we aim to make our details accurate and reliable, if there is any point of particular concern to you, please contact the office. The apparatus, equipment, fittings and services have not been checked and therefore it is in the purchaser's interest to establish the working condition of the appliance included. Personal items such as furnishings which may be shown in the photographs are not included in the asking price. No survey has been carried out by M & M Properties. Measurements have a tolerance of +/- 3". Please note that this floorplan has not been drawn to scale and is therefore for room layout purposes only. It does not constitute or form part of a contract. Doors may be hung in opposite directions.

27/29 Hockliffe Street, Leighton Buzzard - LU7 1EZ

Sales: 01525 377733 - Lettings: 01525 371997

sales@mandmproperties.co.uk - lettings@mandmproperties.co.uk

LOCAL PEOPLE WORKING FOR YOU