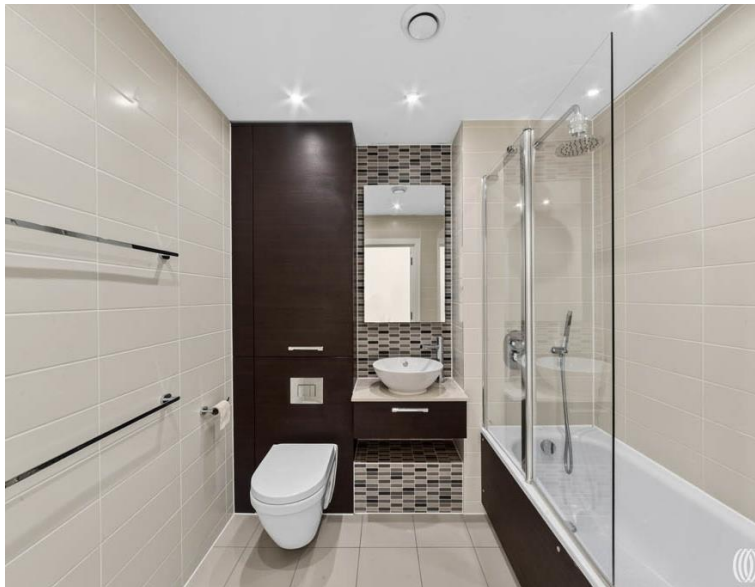


Station Street, London E15

£625,000 Leasehold







Description

This two-bedroom apartment on the nineteenth floor of Unex Tower offers exceptional connectivity and exclusive resident facilities. Located moments from Stratford Station, residents enjoy direct access to the Central, Jubilee, and Elizabeth lines, plus National Rail and DLR services, placing Canary Wharf, Liverpool Street, and the City within easy reach. The development features 24-hour concierge service and a residents' roof terrace with panoramic views across London's skyline, whilst the apartment itself spans 978 square feet of well-designed space.

The apartment's thoughtful design maximises natural light through expansive floor-to-ceiling curved windows along the western elevation, capturing spectacular sunset views, whilst the northeast-facing winter garden provides a versatile indoor-outdoor space for year-round enjoyment. Two well-proportioned bedrooms include a principal suite with en-suite facilities, complemented by a second contemporary bathroom, ensuring comfort and privacy for residents and guests alike. The generous reception and kitchen area forms the heart of the home, where the curved architecture creates a distinctive sense of space and flow.

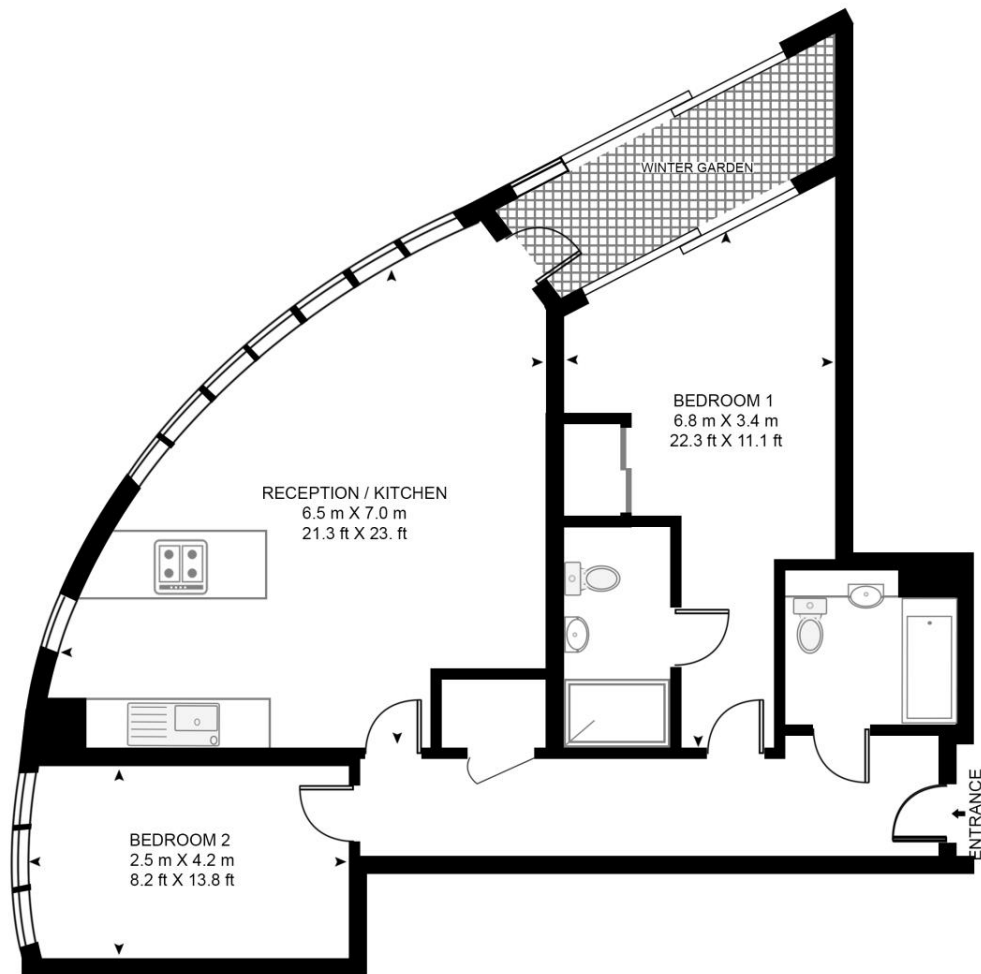
- Two bathrooms (one en-suite)
- Winter garden
- 24h Concierge service
- Residents' roof terrace
- Within moments of Stratford station & Westfield shopping centre
- Queen Elizabeth Olympic Park proximity
- EPC Rating B

Floorplan

978 sq ft | 91 sq m

UNEX TOWER, 5 STATION STREET

APPROXIMATE GROSS INTERNAL FLOOR AREA 978 SQ.FT (90.9 SQ.M)



NINETEENTH FLOOR



This floor plan has been defined by the RICS Code of Measurement. This floor plan and all others are for approximate representative purposes only and upon usage is agreed to as such by the client.
WWW: hdvirtualart.com | TEL: 0203.974.1567 | EMAIL: info@hdvirtualart.com

Stratford
5 Station Street,
London E15 1DA
+4420 3147 1500
Lettingsstratford@eu.jll.com

Urban living, your way.

jll.co.uk/residential

© 2019 Jones Lang LaSalle IP, Inc. All rights reserved. All information contained herein is from sources deemed reliable; however, no representation or warranty is made to the accuracy thereof.

