

Unit 6 13 Burton Place, Manchester, Lancashire, M15 4PT

Tel: 0161 637 8336

Email: contactus@ascendproperties.com

www.ascendproperties.com

Ascend

Built on higher standards



Petal Court, Worsley, M28

£885 PCM

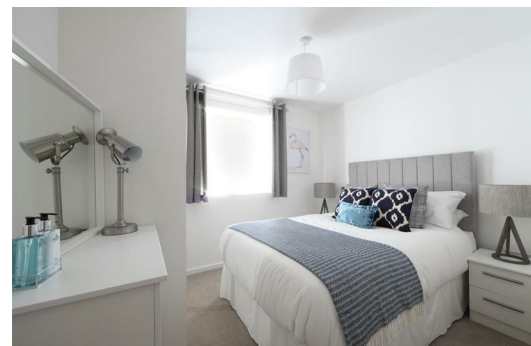
Welcome to Ascend Living at Heyfields. Located in Walkden, Heyfields is an impressive new development of 66 family homes and 72 apartments, 7 miles from Manchester city centre. Set in a picturesque location and within easy reach of the city centre, this development is ideal for both growing families and young professional couples.

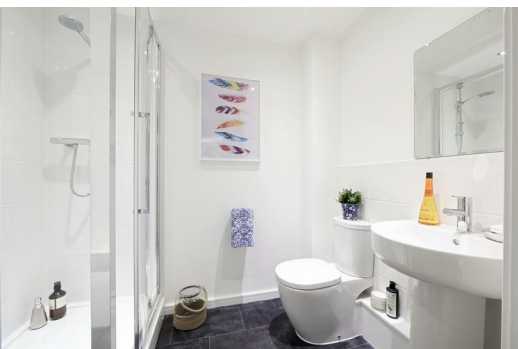
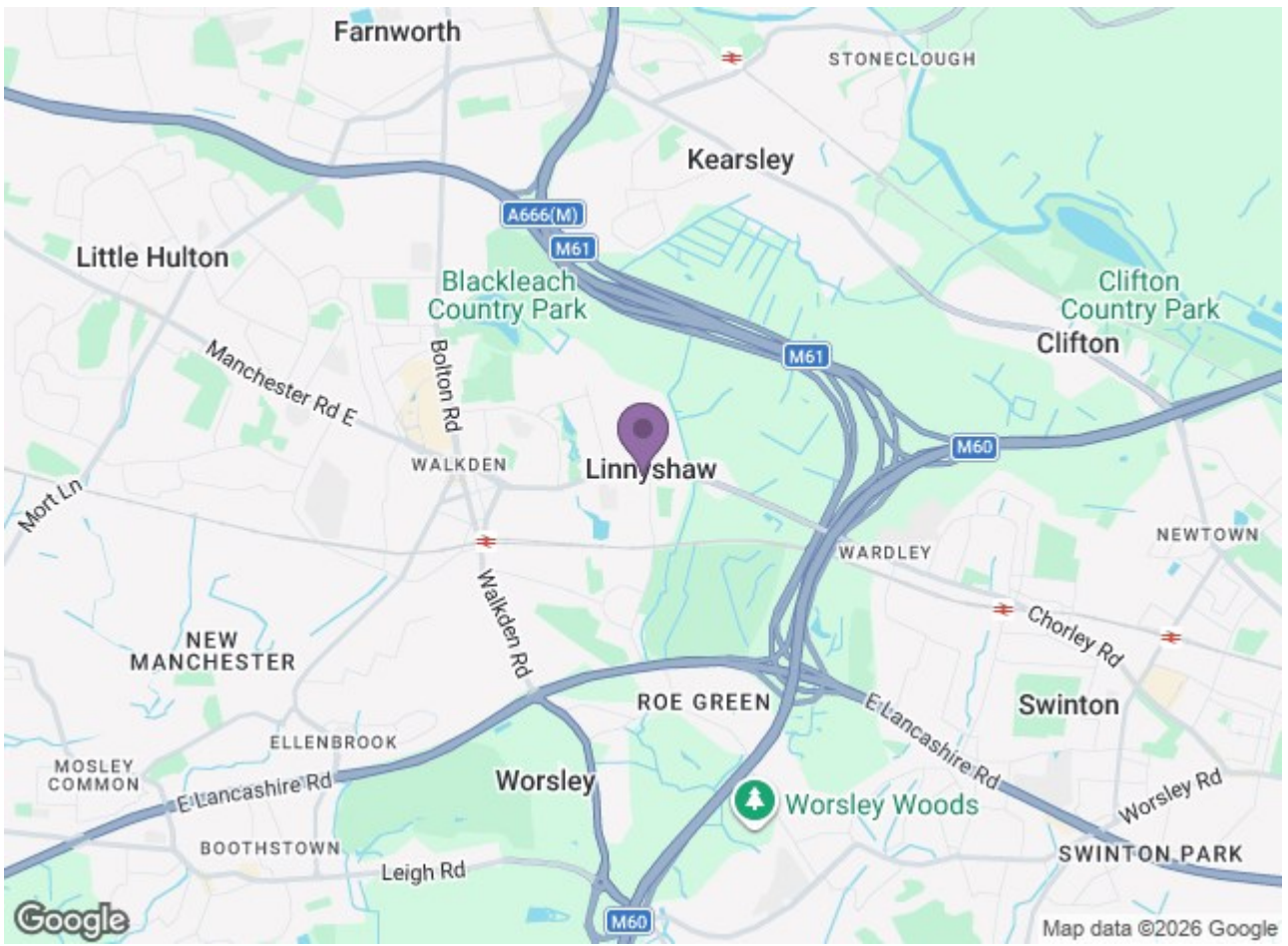
Feast your eyes on our Roosevelt apartments. Perfect for singles or a couple, they feature a contemporary open-plan kitchen, living and dining area, a beautiful double bedroom with fitted wardrobe, and a sizeable bathroom. Energy efficient, these apartments have quality flooring and blinds throughout. Secure as they are comfortable, you also benefit from feature fitted alarm systems and secure-by-design windows and doors.

Whilst this property is a new build property, it has been previously let. All properties are maintained and inspected once a tenant has moved out in order to keep the property to a high standard.

Images are demonstrative of this property type. The images are therefore not plot or site specific and spec may vary slightly. Properties are let unfurnished.

Available Now
Deposit: £1020
Unfurnished
Council tax: A





Energy Efficiency Rating		Environmental Impact (CO ₂) Rating	
Current	Target	Current	Target
Energy A	Energy B	CO ₂ 20	CO ₂ 20
Energy B	Energy C	CO ₂ 25	CO ₂ 25
Energy C	Energy D	CO ₂ 30	CO ₂ 30
Energy D	Energy E	CO ₂ 35	CO ₂ 35
Energy E	Energy F	CO ₂ 40	CO ₂ 40
Energy F	Energy G	CO ₂ 45	CO ₂ 45
Energy G	Energy H	CO ₂ 50	CO ₂ 50
Energy H	Energy I	CO ₂ 55	CO ₂ 55
Energy I	Energy J	CO ₂ 60	CO ₂ 60