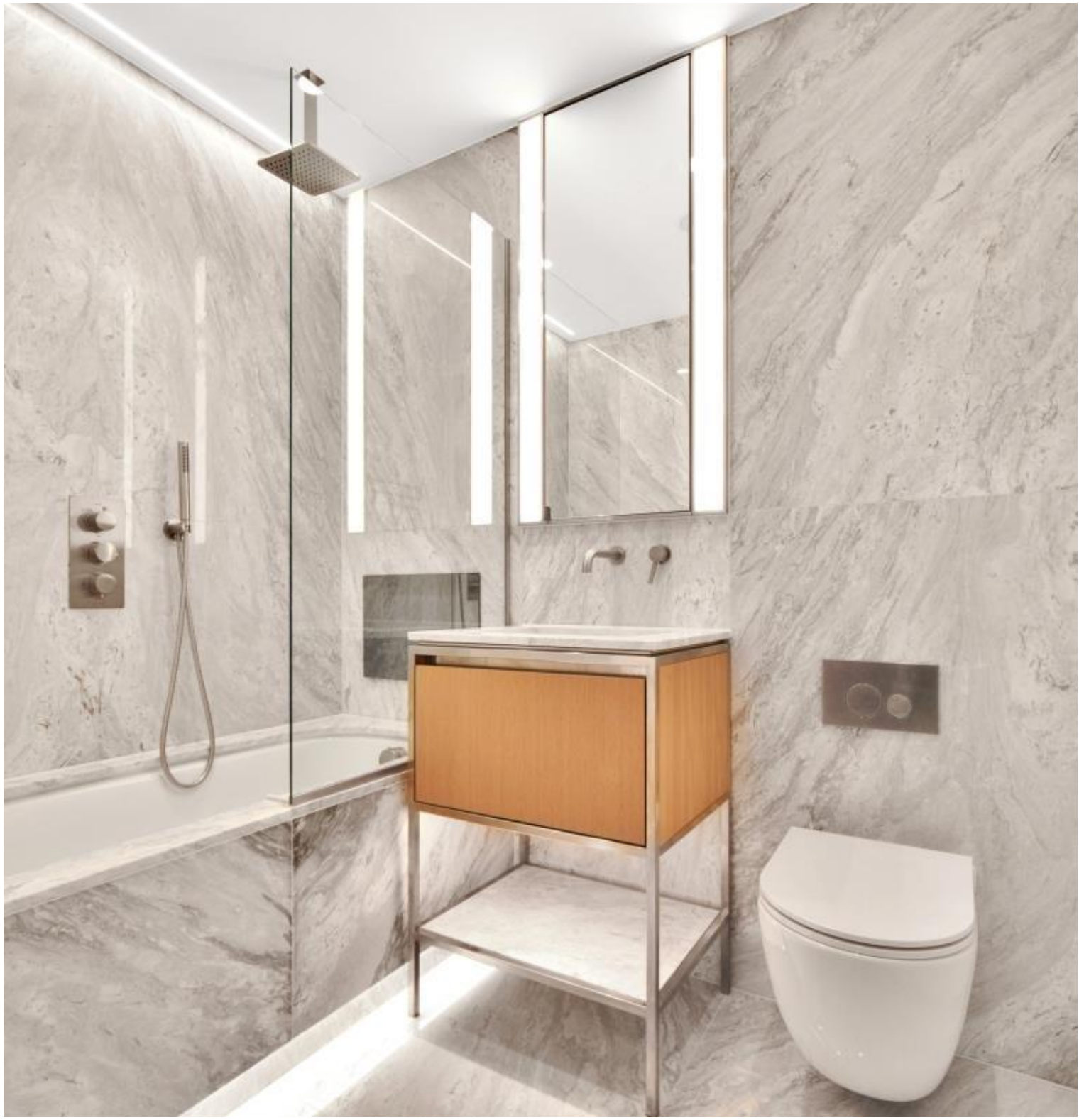


Minories, London EC3N
Price £675 per week - Furnished







Description

A brand new one bedroom apartment in the sought after development by Regal Homes, The Haydon. The development boasts 24 hour concierge, on site gym, yoga room, spa pool, cinema & roof top terrace

Situated on the 4th floor, this stunning apartment comprises a double bedroom with fitted wardrobes, spacious open plan living area, fully fitted kitchen with integrated appliances, contemporary bathroom, wood flooring and excellent storage space.

The Haydon has fantastic amenities which include 24 hour concierge, on site gymnasium, yoga room, spa pool and private cinema, along with a rooftop terrace. The development is moments from Aldgate station (0.1 mile), well situated for the City of London and it's fringes.

Council tax band: F. Rent is payable on a monthly basis and you may be required to pay more than a month's rent in advance, depending on your circumstances. You will be required to pay a 1 week holding deposit following a successful offer. Tenancies with annual rents up to £50,000 will require a 5 weeks' security deposit, while those exceeding this threshold will require a 6 weeks' deposit. Utility bills, council tax, telephone line and broadband are not included in the rent. As well as paying the rent, you may also be required to make some additional permitted payments. If your tenancy does not qualify as an AST, additional fees may apply. Please visit jll.co.uk/fees for details of fees that may be payable when renting a property. To check broadband and mobile phone coverage please visit Ofcom here ofcom.org.uk/phones-telecoms-and-internet/advice-for-consumers/advice/ofcom-checker

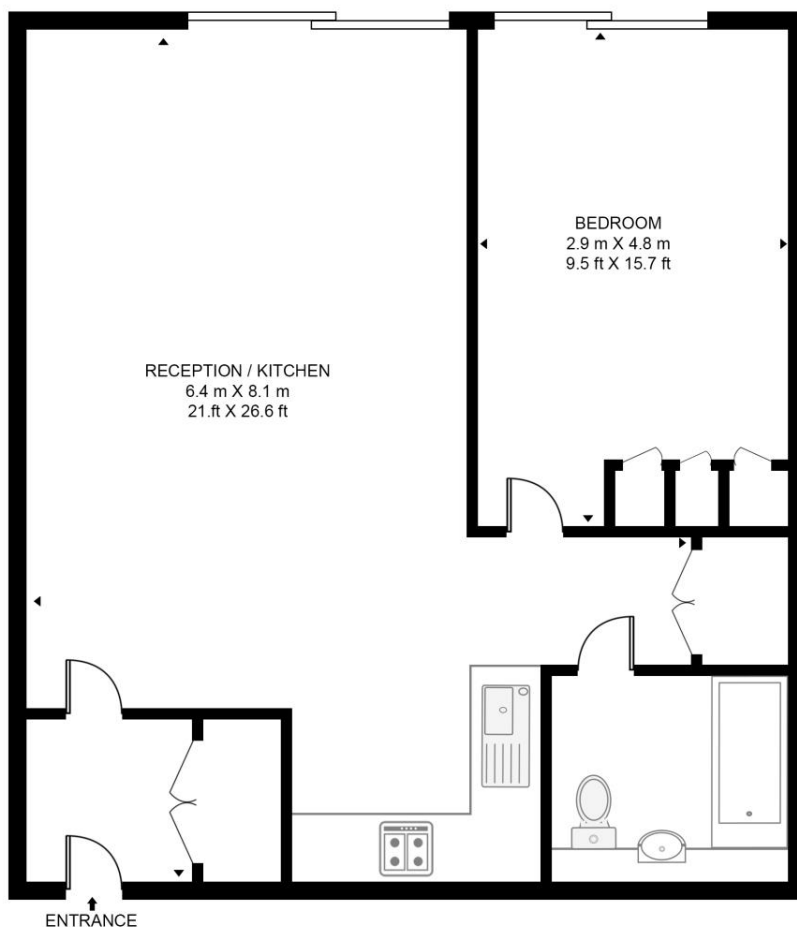
- Spacious one bedroom apartment
- Open plan living area
- Fully fitted kitchen
- 24 hour concierge
- On site gym
- Yoga room
- Spa pool
- Private cinema
- Rooftop terrace
- Approx 627 sq. ft (58.3 sq. m)

Floorplan

627 sq ft | 58 sq m

THE HAYDON

APPROXIMATE GROSS INTERNAL FLOOR AREA 627 SQ.FT (58.3 SQ.M)



FOURTH FLOOR



HDVA

This floor plan has been defined by the RICS Code of Measurement. This floor plan and all others are for approximate representative purposes only and upon usage is agreed to as such by the client.

WWW: hdvirtualart.com | TEL: 0203.974.1567 | EMAIL: info@hdvirtualart.com

City
25 Walbrook The Walbrook
Building,
London EC4N 8AF
+4420 7337 4000

Urban living, your way.

jll.co.uk/residential

© 2019 Jones Lang LaSalle IP, Inc. All rights reserved. All information contained herein is from sources deemed reliable; however, no representation or warranty is made to the accuracy thereof.

