



DM&Co.
— SALES & LETTINGS —

**32 Hazel Grove
Solihull, B94 6QW**

Situated on the sought after Hazel Grove in Hockley Heath, this semi-detached house is a beautifully presented family home, offering three generous bedrooms, a stylish open plan kitchen, living and dining space, study/playroom, underfloor heating and a private landscaped rear garden.



DETAILS

Your Text Here



OUTSIDE

Your Text Here



GENERAL INFORMATION

Planning Permission & Building Regulations:

It is the responsibility of Purchasers to verify if any planning permission and building regulations were obtained and adhered to for any works carried out to the property.

Tenure: Freehold.

Services: All mains services are connected to the property. However, it is advised that you confirm this at point of offer.

Local Authority: Solihull Metropolitan Borough Council.

Council Tax Band: D.

OTHER SERVICES

DM & Co. Homes are pleased to offer the following services:-

Residential Lettings: If you are considering letting your property, please contact the office on 0121 775 0101, Option 2.

Mortgage Services: If you would like advice on the best mortgages available, please contact us on 0121 775 0101.

Agents Note: Whilst every care has been taken to prepare these sales particulars, they are for guidance purposes only. All measurements are approximate and are for general guidance purposes only and whilst every care has been taken to ensure their accuracy, they should not be relied upon and potential buyers are advised to recheck the measurements.

FEATURES

- Immaculate Semi-Detached Home
- Three Generous Bedrooms
- Open Plan Kitchen/Living Space
- Modern Kitchen with Large Island
- Separate Study or Playroom
- Guest Cloakroom
- Built-in SONOS Sound System
- Underfloor Heating
- Private Landscaped Rear Garden
- Conveniently Located for Local Amenities

SIZE

Total - 1323.00 sq ft

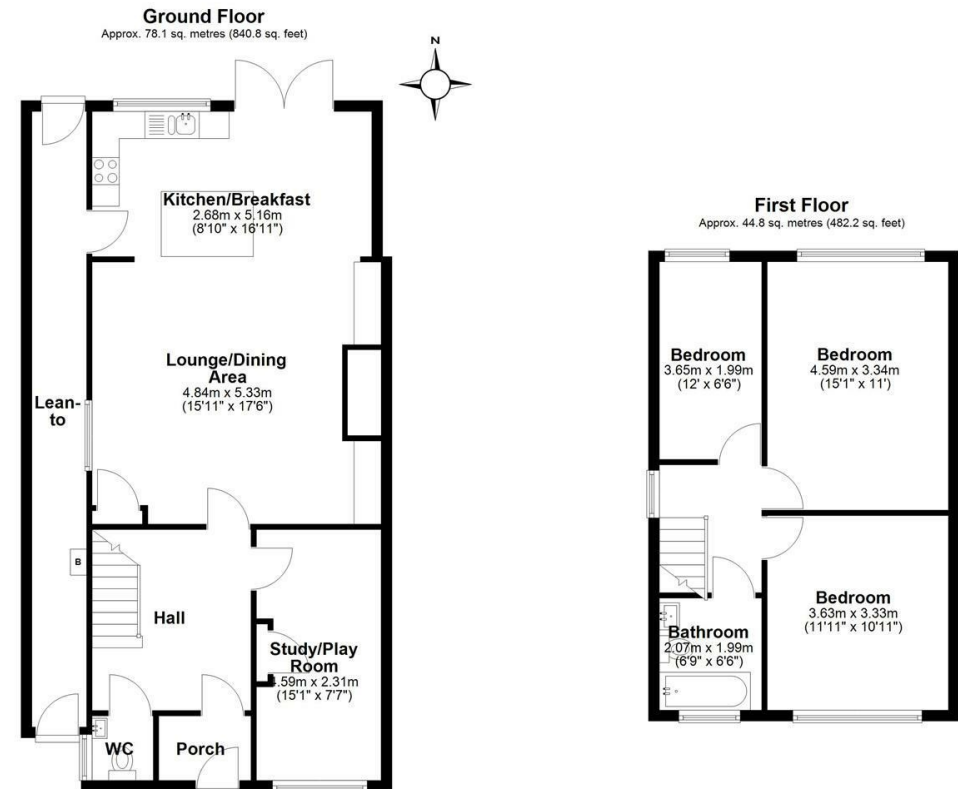
VIEWING

Book a viewing with Sole Agents DM & Co. Homes by phone or email:

📞 01564 777 314

@ dorridge@dmandcohomes.co.uk

Agents Note: Whilst every care has been taken to prepare these sales particulars, they are for guidance purposes only. All measurements are approximate are for general guidance purposes only and whilst every care has been taken to ensure their accuracy, they should not be relied upon and potential buyers are advised to recheck the measurements.



Total area: approx. 122.9 sq. metres (1323.0 sq. feet)

This floor plan is for illustration purposes only, this is not intended to be a measured/scaled survey or comply with RICS guidelines. All measurements (including total floor area) openings, orientation and floor area are approximate. No details are guaranteed, they cannot be relied upon for any purpose and do not form part of any agreement. A party must rely upon its own inspection(s). No responsibility is taken for any error, omission, or mis-statement.
Plan produced using PlanUp.

