



**Guide Price**  
**£725,000**

**Freehold**

4x  2x  3x 

**Forson Close,  
Tenterden, Kent, TN30**

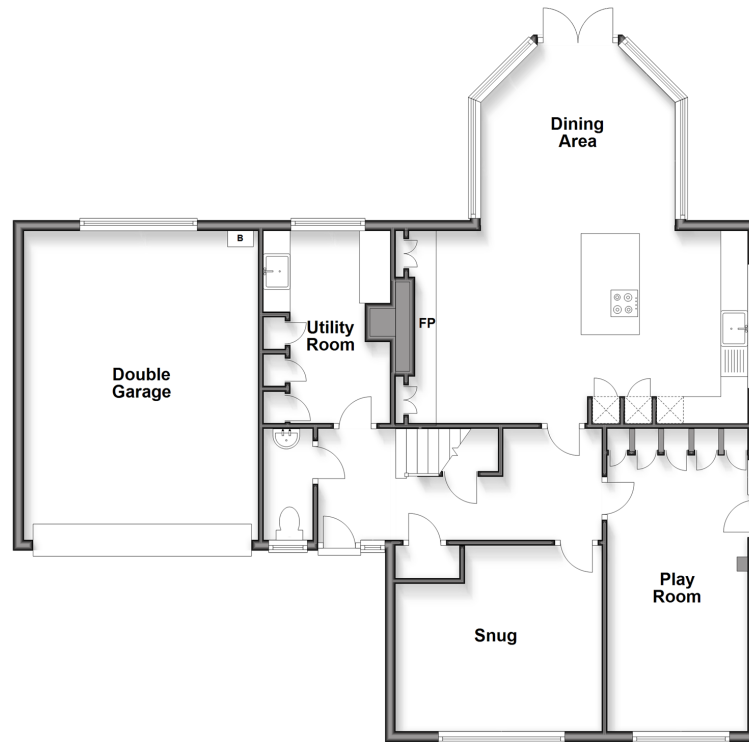
**OVER 60?**

Secure this property  
for up to **59% less!**

*Wards*  
Helping you move forwards

### Ground Floor

Approx. 113.0 sq. metres (1216.6 sq. feet)



## Accommodation

### GROUND FLOOR

#### Hallway

Snug: 12'6 x 12'0 (3.81m x 3.66m)

Play Room: 16'6 x 8'10 (5.03m x 2.69m)

Family Room/Kitchen/Diner Area: 24'2 x 21'7 (7.37m x 6.58m)

Utility Room: 11'9 x 7'11 (3.58m x 2.41m)

#### Cloakroom

### FIRST FLOOR

#### Landing

Family Bathroom: 7'10 x 7'4 (2.39m x 2.24m)

Bedroom 1: 14'1 x 11'6 (4.30m x 3.51m)

En-Suite Shower Room: 7'4 x 7'2 (2.24m x 2.19m)

Bedroom 4: 8'11 x 8'6 (2.72m x 2.59m)

Bedroom 2: 12'1 x 8'0 (3.69m x 2.44m)

Bedroom 3: 9'3 x 8'1 (2.82m x 2.47m)

Store Room: 19'0 x 7'6 (5.80m x 2.29m)

### OUTSIDE

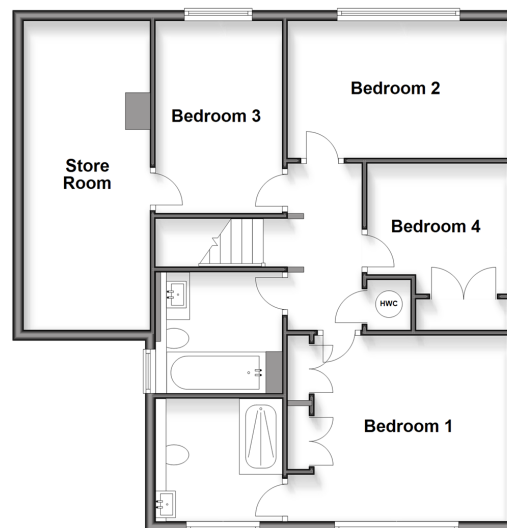
Double Garage with Office

Front and Rear Garden

Driveway

### First Floor

Approx. 75.7 sq. metres (815.3 sq. feet)





## Main features

- Large open plan kitchen/diner/family room
- Versatile layout to include 2 further reception rooms
- Bedroom 1 comes complete with an en-suite shower room
- Double garage with office section & large landscaped private sunny rear garden
- Tucked away in highly desirable Tenterden location, chain Free

## Nearest Schools

Primary Schools: Tenterden C of E Junior School 0.4 miles, St Michael's C of E Primary (Tenterden) 0.9 miles, High Halden C of E Primary 2.3 miles, Secondary & Further Education Schools: Homewood School and Sixth Form Centre 0.3 miles, Benenden School 5.1 miles,

## Transport Information

Train Stations: Appledore 5.9 miles, Pluckley 6.3 miles, Headcorn 7.0 miles

## Address

Forson Close, Tenterden, Kent, TN30

## Directions

For directions to this property please contact us.



**Wards**  
Helping you move forwards

Call Tenterden Branch 01580 766002 ■ [wardsof Kent.co.uk](http://wardsof Kent.co.uk)



- Legal advice should be taken to verify fixtures/fittings, planning, alterations and/or lease details
- Appliances & services are untested, dimensions are approximate and floor plans are not to scale
- Through a Homewise Home For Life Plan people aged 60+ can secure this property for up to 59% less, by purchasing a Lifetime Lease

EPC RATING

CURRENT: D(66) POTENTIAL: B(81)

14008232/20251119/CD/AQ