



Connells

Alexandra Place
Plymouth



Property Description

We are excited to introduce this versatile mid-terrace property to the market, situated in a prime central location. Benefiting from five double bedrooms, lounge, kitchen, utility room, two bathrooms, rear garden and permit on-street parking.

Located in the central location of Mutley, close to a host of local amenities such as shops and restaurants, well-regarded schools, local parks whilst being a stone's throw away from the city centre, Plymouth university and major transport links.

This property boasts ample space spread across three floors, with spacious rooms throughout making a perfect residential family home or a brilliant investment with a HMO license already in place, appealing to a wide range of buyers.

EARLY VIEWINGS ADVISED!

Ground Floor

Lounge

16' 2" maximum x 11' 8" maximum (4.93m maximum x 3.56m maximum)

Utility

10' x 9' 10" (3.05m x 3.00m)

Shower Room

First Floor

Bedroom Two

16' 7" maximum x 13' 7" maximum (5.05m maximum x 4.14m maximum)

Bedroom Three

13' 1" maximum x 11' 11" maximum (3.99m maximum x 3.63m maximum)

Kitchen

16' 1" x 10' 5" (4.90m x 3.17m)

Second Floor

Bedroom One

18' 4" maximum x 13' 11" maximum (5.59m maximum x 4.24m maximum)

En-Suite

Bedroom Four

13' 3" maximum x 10' 9" maximum (4.04m maximum x 3.28m maximum)

Bedroom Five

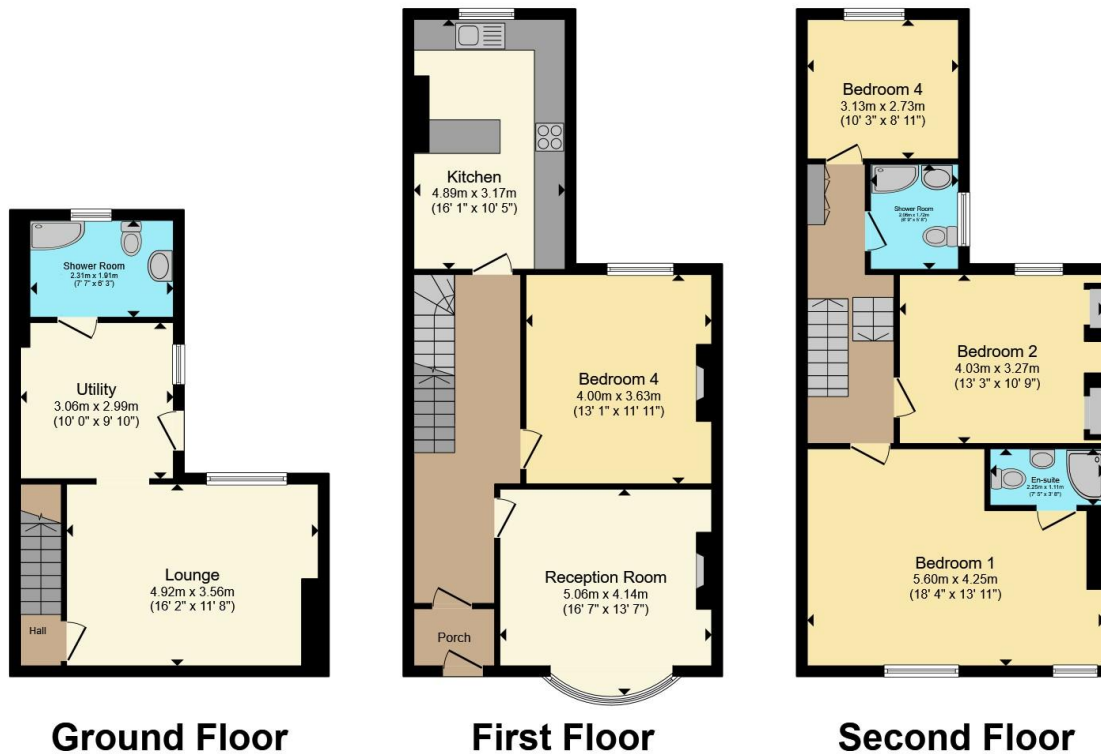
10' 3" x 8' 11" (3.12m x 2.72m)

Shower Room









Total floor area 155.9 m² (1,678 sq.ft.) approx
 This floor plan is for illustrative purposes only. It is not drawn to scale. Any measurements, floor areas (including any total floor area), openings and orientation are approximate. No details are guaranteed, they cannot be relied upon for any purpose and they do not form part of any agreement. No liability is taken for any error, omission or misstatement. A party must rely upon its own inspection(s). Powered by www.propertybox.io



To view this property please contact Connells on

T 01752 674 467
E plymouth@connells.co.uk

32 Mannamead Road
 PLYMOUTH PL4 7AA

EPC Rating: D Council Tax Band: B

Tenure: Freehold

view this property online connells.co.uk/Property/PLH313557



1. MONEY LAUNDERING REGULATIONS Intending purchasers will be asked to produce identification documentation at a later stage and we would ask for your co-operation in order that there will be no delay in agreeing the sale. 2. These particulars do not constitute part or all of an offer or contract. 3. The measurements indicated are supplied for guidance only and as such must be considered incorrect. Potential buyers are advised to recheck measurements before committing to any expense. 4. We have not tested any apparatus, equipment, fixtures, fittings or services and it is in the buyers interest to check the working condition of any appliances.

Connells Residential is registered in England and Wales under company number 1489613, Registered Office is Cumbria House, 16-20 Hockliffe Street, Leighton Buzzard, Bedfordshire, LU7 1GN. VAT Registration Number is 500 2481 05.

See all our properties at www.connells.co.uk | www.rightmove.co.uk | www.zoopla.co.uk

Property Ref: PLH313557 - 0003