

Bradmore Park Road W6



Bradmore Park Road W6

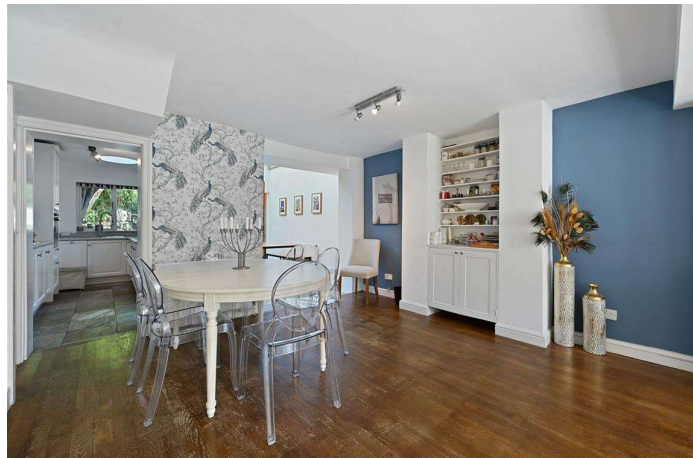
4 BEDROOMS
DOUBLE RECEPTION / DINING ROOM
KITCHEN / BREAKFAST ROOM
FAMILY BATHROOM & SHOWER ROOM
PAVED & WALLED GARDEN
EAVES STORAGE
GUEST CLOAKROOM
EPC RATING: D 63
COUNCIL TAX BAND: G

A wonderful 4 bedroom Victorian family home arranged over 4 floors located on one of Bracklenbury Villages most sought after roads. The lower ground floor is arranged with a bright and spacious semi open plan double reception, kitchen and dining room with direct access to a large and private rear garden. The raised ground floor has 2 bedrooms and a guest cloakroom. There is a double bedroom which spans the width of the first floor with a spacious family bathroom behind with the 3rd double bedroom and shower room occupying the top floor. This generous house of approximately 1590sq ft provides flexible living accommodation and the ability to add one's own taste and style.

Bradmore Park Road is ideally located for all the local amenities in addition to the beautiful green spaces of Ravenscourt Park. There are excellent state and private schools nearby as well as the fantastic transport hubs of Hammersmith and Shepherd's Bush and the retail, restaurant and leisure facilities of Westfield London.

PRICE GUIDE £1,390,000
FREEHOLD

SUBJECT TO CONTRACT









BRADMORE PARK ROAD, W6

