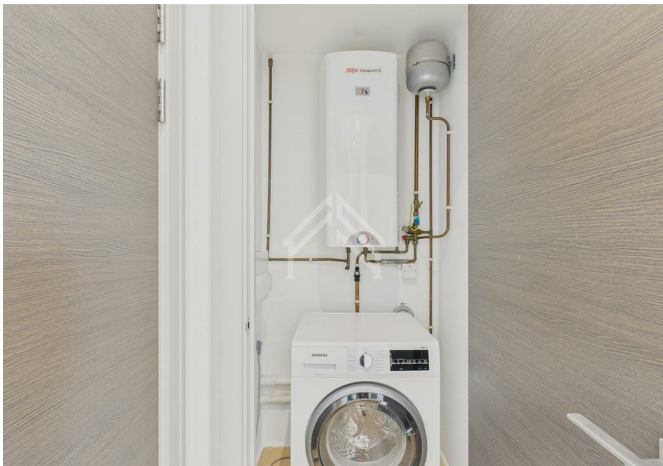




76544754 Flint Court, Finchley, London, N12 0BT
£1,400 Per month



76544754 Flint Court, Finchley, London, N12 0BT

£1,400 Per month

Be the first to view this new listing in a sought-after area, perfectly positioned close to the bus station and Tube for quick, stress-free commutes. The building offers secure, gated access and lift service, with dedicated bike storage for added convenience. Professionally managed throughout, residents benefit from responsive support and well-kept communal areas. Inside, the kitchen is fitted with a dishwasher and there's a washing machine & dryer for easy, everyday living. Daily essentials are just moments away with a supermarket nearby. An ideal choice for professionals or couples seeking a low-maintenance home with excellent transport links and modern comforts. Enquire today to arrange your viewing.

Description



Situation

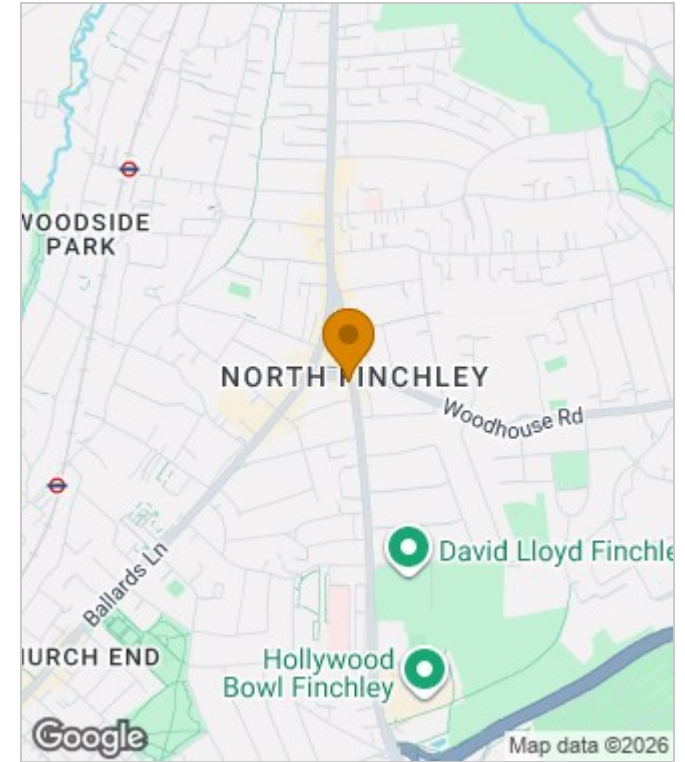


Furnished
Council Tax Band: C
Available:

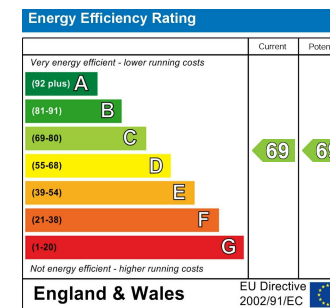
Floor Plans



Area Map



Energy Performance Graph



These particulars, whilst believed to be accurate are set out as a general outline only for guidance and do not constitute any part of an offer or contract. Intending purchasers should not rely on them as statements of representation of fact, but must satisfy themselves by inspection or otherwise as to their accuracy. No person in this firm's employment has the authority to make or give any representation or warranty in respect of the property.