

EDEN MIDCALF  
— SALES & LETTINGS —

£300,000  
Sandy Bank  
Bewdley, DY12 2AY



## PROPERTY SUMMARY

A wonderful period three-bedroom cottage situated very close to the heart of Bewdley and its local amenities, complete with a driveway; such a rarity so near to town. Available with No Upward Chain, the property is attractively presented, incorporating modern convenience with period-style charm, showcasing exposed timber beams and two feature fireplaces. Benefiting from gas central heating and double-glazing throughout, the property presents two spacious reception rooms, a kitchen with integrated appliances, three bedrooms, a newly updated bathroom, separate WC and an enclosed rear garden.

3



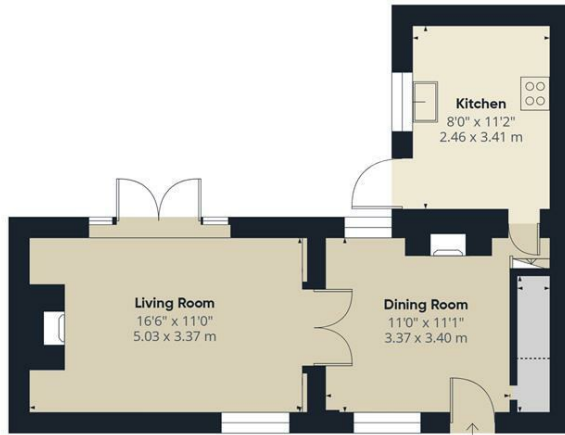
1



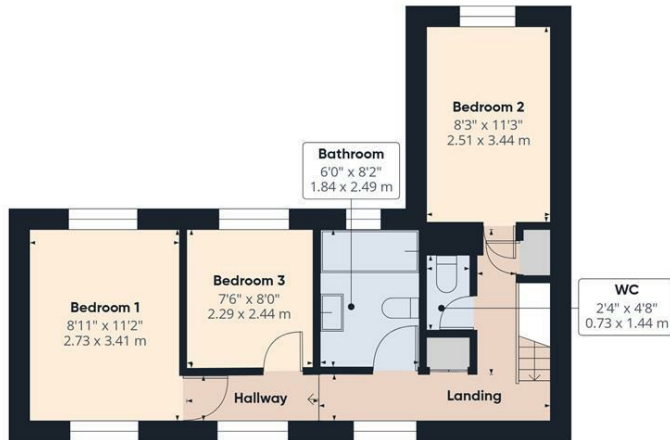
2







Ground Floor



Floor 1

Approximate total area<sup>(1)</sup>

821 ft<sup>2</sup>  
76.3 m<sup>2</sup>

Reduced headroom

11 ft<sup>2</sup>  
1 m<sup>2</sup>

(1) Excluding balconies and terraces

Reduced headroom  
..... Below 5 ft/1.5 m

Calculations reference the RICS IPMS 3C standard. Measurements are approximate and not to scale. This floor plan is intended for illustration only.

GIRAFFE360

**LOCAL AUTHORITY**

Wyre Forest

**TENURE**

Freehold

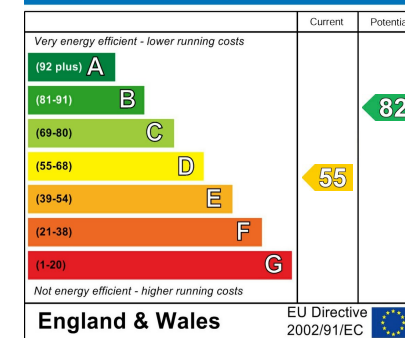
**COUNCIL TAX BAND**

D

**VIEWINGS**

By prior appointment only

**Energy Efficiency Rating**



Agents Note: Whilst every care has been taken to prepare these particulars, they are for guidance purposes only. All measurements are approximate and are for general guidance purposes only and whilst every care has been taken to ensure their accuracy, they should not be relied upon and potential buyers/tenants are advised to recheck the measurements.

**EDEN MIDCALF**  
SALES & LETTINGS

5 Load Street  
Bewdley  
DY12 2AF

01299 402392  
wyreforest@edenmidcalf.co.uk  
<https://www.edenmidcalf.co.uk/>  
us/