



Lime Kiln Lane, Thetford, IP24 2BU

Rent - £900 PCM Deposit - £1,038

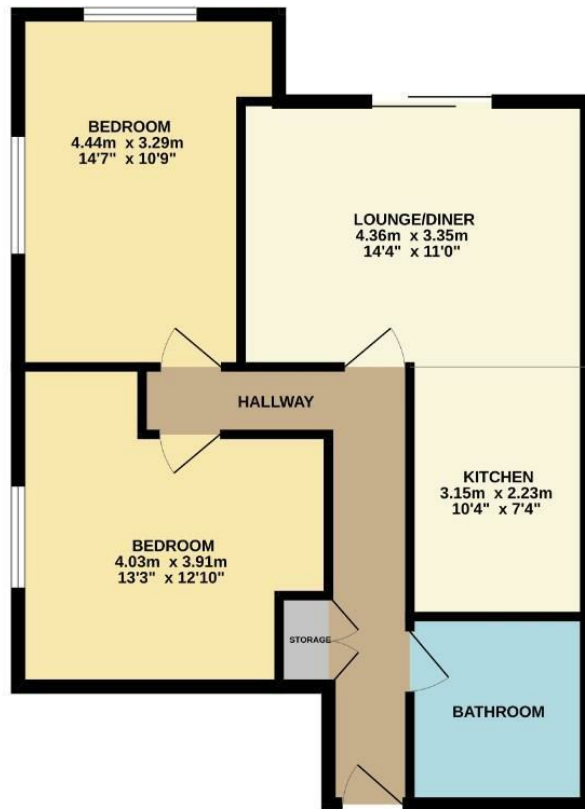
This modern first floor apartment offers well-presented accommodation in a convenient location close to the town centre, making it ideal for professionals. The property features an open plan kitchen and dining area, two good-sized double bedrooms and benefits from a private balcony, providing a pleasant outdoor space. Additional advantages include allocated parking, an EPC rating of B, council tax band A and easy walking access to local amenities. The apartment is available now and ready for move in.

- MODERN FIRST FLOOR APARTMENT
- 2 DOUBLE BEDROOMS
- PRIVATE BALCONY
- EPC RATING - B
- WALKING DISTANCE TO AMENITIES
- OPEN PLAN KITCHEN/DINER
- LOCATED CLOSE TO TOWN CENTRE
- ALLOCATED PARKING
- COUNCIL TAX BAND - A
- AVAILABLE NOW



Council Tax Band: A - EPC Rating: B 83

GROUND FLOOR
61.3 sq.m. (660 sq.ft.) approx.



TOTAL FLOOR AREA: 61.3 sq.m. (660 sq.ft.) approx.
Whilst every attempt has been made to ensure the accuracy of the floorplan contained here, measurements of doors, windows, rooms and any other items are approximate and no responsibility is taken for any error, omission or mis-statement. This plan is for illustrative purposes only and should be used as such by any prospective purchaser. The services, systems and appliances shown have not been tested and no guarantee as to their operability or efficiency can be given.
Made with Moxipix 52020.

