



## Squires Lane, N3

### £550,000

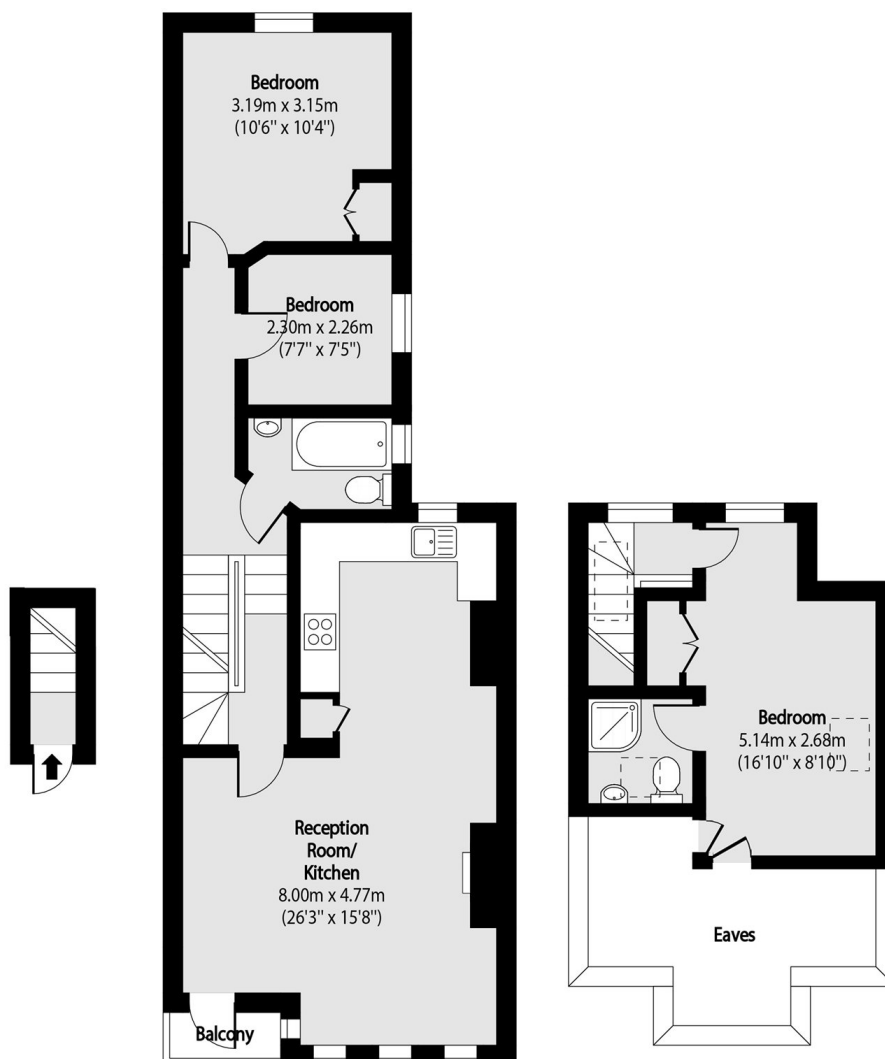
Arranged over the top two floors is this stunning three bedroom apartment, with an open plan kitchen and reception room, a private balcony and two bathrooms.

Squires Lane runs adjacent to Ballards Lane, proving easy access to local transport links including Finchley Central tube station and amenities found nearby including green spaces and Great North Leisure Park.

### Features

- Three Bedrooms
- Private Balcony
- Leasehold
- Two Bathrooms
- Excellent Condition
- Quiet Road

# Squires Lane, LONDON, N3



Total area (approx): 81.78 sq m (880 sq. ft)

Balcony total area (approx): 1.19 sq m (13 sq. ft)

Eaves total area (approx): 9.50 sq m (102 sq. ft)

## Dexters

Finchley  
126 Ballards Lane  
Finchley  
London  
Sales  
020 8742 4180

Energy Rating: D. We aim to make our particulars both accurate and reliable. However they are not guaranteed; nor do they form part of an offer or contract. If you require clarification on any points then please contact us, especially if you're traveling some distance to view. Please note that appliances and heating systems have not been tested and therefore no warranties can be given as to their good working order.

 **RICS** | Regulated  
Estate Agent  
and Letting Agent

[dexters.co.uk](https://www.dexters.co.uk)