



Dolphins Road, Folkestone, Kent

Folkestone

MATCH  
ESTATES

Guide Price

£425,000



**Bedrooms: 3 | Bathrooms: 1 | Receptions: 2**

Tucked away on the ever-popular Dolphins Road, this beautifully finished and extended three-bedroom semi-detached home is full of light, space, and charm, a property that is as practical for everyday life as it is inviting for entertaining and relaxation.

Step inside and you'll find a home that flows naturally from one space to the next. The extended kitchen is a real showpiece, filled with natural light from the roof window and designed with modern living in mind, perfect for everything from morning coffee to hosting friends over dinner. To the rear, the dining room and snug create a cosy yet spacious retreat, where two overhead roof windows bring in sunshine throughout the day, making it an ideal spot to read, work from home, or enjoy family time.

At the front, the lounge offers a warm and welcoming space with a bay window adding to its charm. For growing families or those in need of flexibility, this room can also double as a fourth bedroom, guest room, or even a home office.

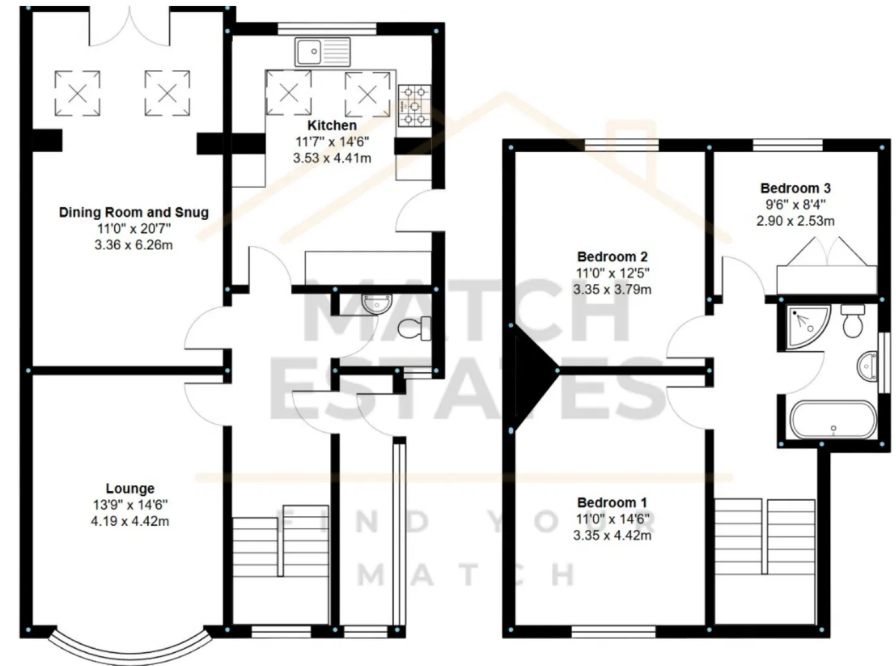
Upstairs, the three bedrooms offer comfortable sanctuaries, with plenty of space for both rest and creativity. The family bathroom feels more like a boutique hotel suite, with a luxurious free-standing bath and a remote-controlled shower, it's a place to truly unwind at the end of the day.

The garden is an absolute highlight. Generous in size and cleverly laid out, it offers something for everyone: a patio for summer evenings, a BBQ area for entertaining, additional seating areas for quiet moments, and even an allotment space at the end for those who love to grow their own produce. Three sheds and a utility outhouse ensure that practicality is covered too. Off-road parking adds further convenience.

This is a home that brings together style, flexibility, and a wonderful outdoor lifestyle, perfect for families, professionals, or anyone looking for a property with both comfort and character in Folkestone.







Measurements are approximate and for display purposes only

Score	Energy rating	Current	Potential
92+	A		
81-91	B		
69-80	C		78 C
55-68	D	62 D	
39-54	E		
21-38	F		
1-20	G		

## Match Estates

B3 Bouverie House 16 Bouverie Place Folkestone CT20 1AE

01303 475 085

folkestone@match-estates.co.uk

<https://www.match-estates.co.uk/>