



## Raydon Street, N19

£300,000

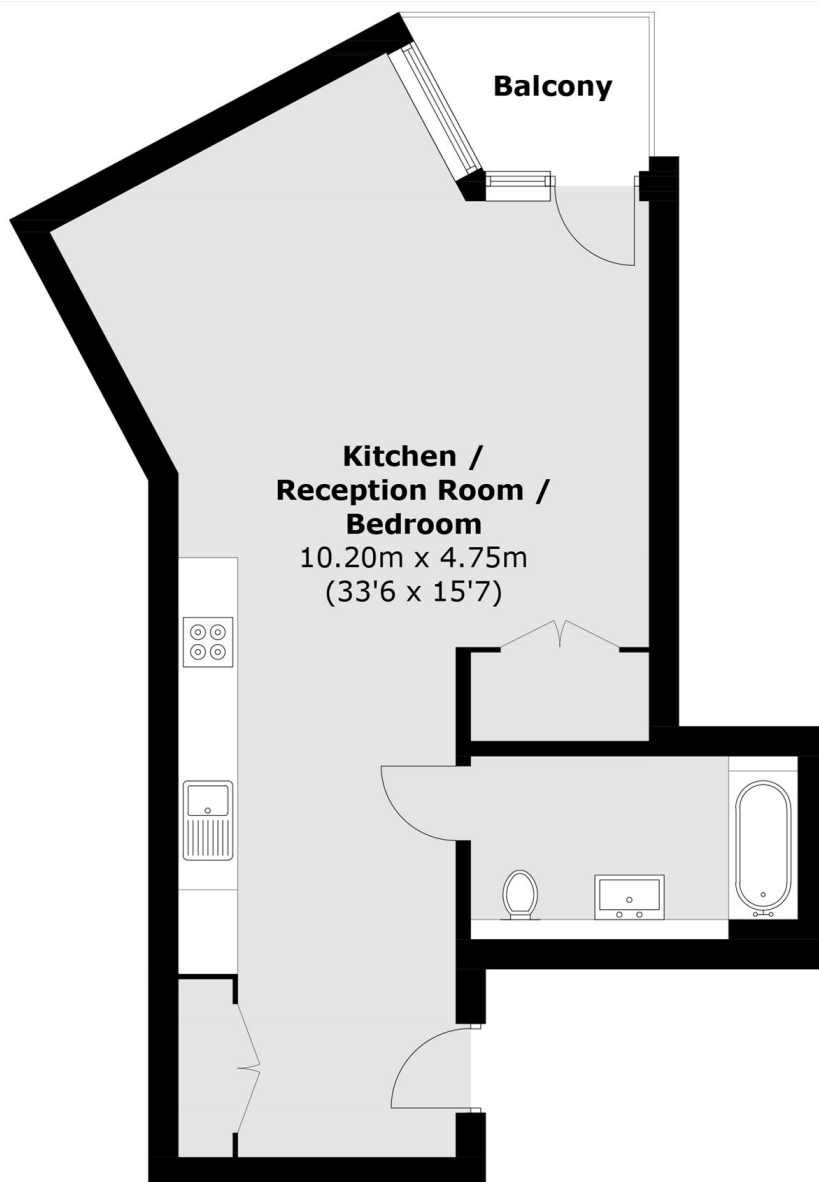
A very well-presented studio apartment situated in a modern building (with lift). The apartment offers a charming open plan kitchen/living space, wooden floors throughout, good storage space and a private balcony.

Raydon Street is ideally located moments from the independent shops and cafés on Swain's Lane and the Parliament Hill entrance to Hampstead Heath. Archway underground station is also conveniently located.

### Features

- Studio Apartment
- Private Balcony
- Lift Access
- Chain Free
- Great Transport Links
- Ample Storage

# Raydon Street, London, N19



## Third Floor

Total area (approx.): 36.23 sq. m (389.9764 sq. ft)  
Balcony area : 3.2 sq. m (34.4 sq. ft)