



8, Queens Court, Hertford
SG13 8AX
Offers In Excess Of £325,000



stevenoates.com



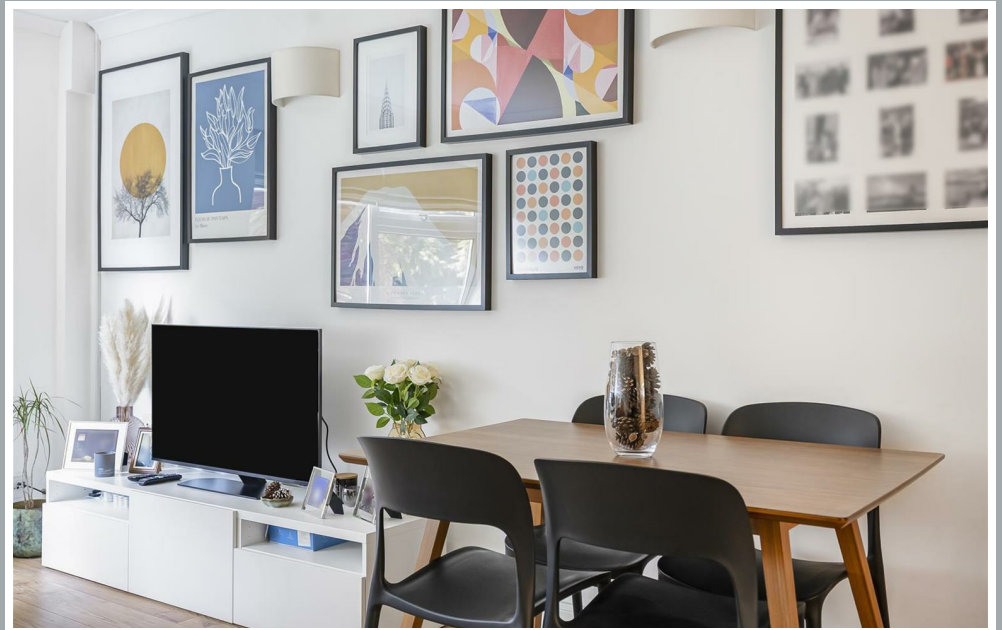
8 Queens Court, Hertford, Herts, SG13 8AX

****CHAIN FREE**** A well presented two bedroom split level maisonette situated in this popular development which is only a short walk from Hertford town centre. The property has been refurbished to a high standard and includes versatile living/bedroom accommodation. Benefits include; two double bedrooms, share of freehold, garage-en-bloc, uPVC double glazing, own front door, communal gardens and parking.

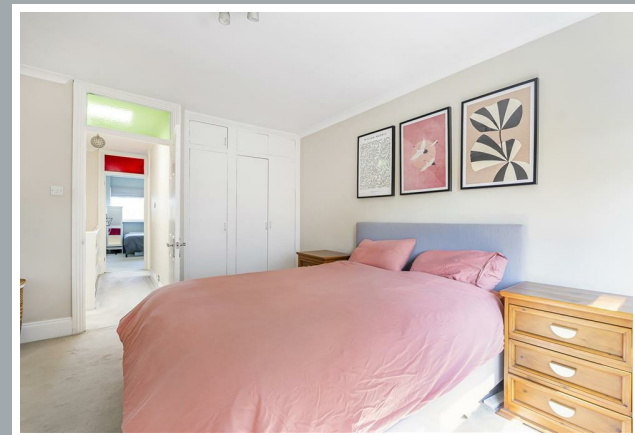
Set on one of Hertford's most sought-after and rarely available roads on the 'Southside', this property enjoys an exceptional location. The town centre is approximately a three-minute walk away, while some of Hertford's most highly regarded schools including Abel Smith Primary School, Simon Balle, and Richard Hale secondary schools, are all within easy reach. Both Hertford North and Hertford East stations are also conveniently close, offering direct links into London Moorgate and Liverpool Street.



70 Fore Street, Hertford, Hertfordshire, SG14 1BY



70 Fore Street, Hertford, Hertfordshire, SG14 1BY



70 Fore Street, Hertford, Hertfordshire, SG14 1BY





70 Fore Street, Hertford, Hertfordshire, SG14 1BY

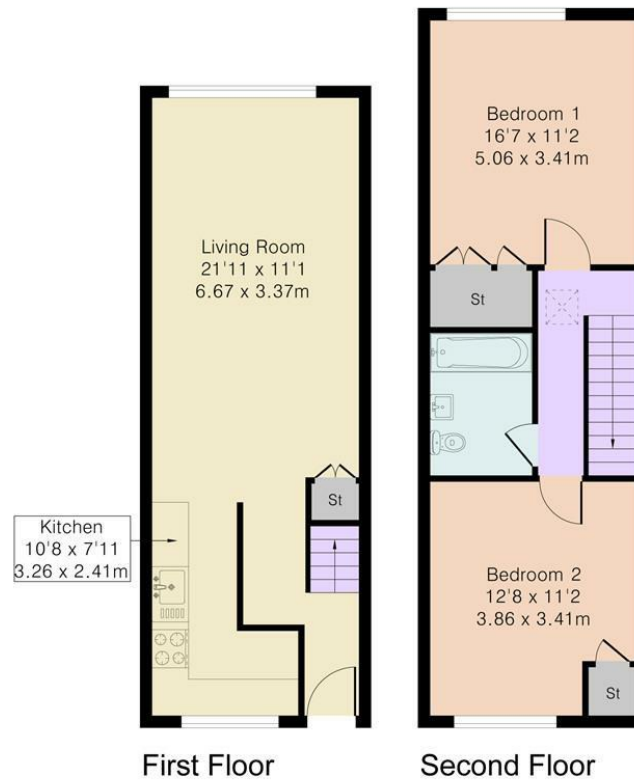


70 Fore Street, Hertford, Hertfordshire, SG14 1BY

Approximate Gross Internal Area 795 sq ft - 74 sq m

First Floor Area 374 sq ft – 35 sq m

Second Floor Area 421 sq ft – 39 sq m



These particulars, whilst believed to be accurate are set out as a general outline only for guidance and do not constitute any part of an offer or contract. Intending purchasers should not rely on them as statements of representation of fact, but must satisfy themselves by inspection or otherwise as to their accuracy. No person in this firm's employment has the authority to make or give any representation or warranty in respect of the property.

