



## Glyn Street offers over £175,000

- Dual aspect lounge with Log Burner
- Beautiful Views To Front Of Property
- Perfect First Time Purchase
- Council Tax Band B
- Downstairs Cloakroom and Utility Room
- EPC Rating: D



 3  1  2



## About the property

This immaculately presented and fully renovated three-bedroom semi-detached home offers an exceptional setting for modern family living. Thoughtfully designed throughout, the property boasts a bright, spacious layout that creates an immediate sense of comfort and welcome.

At the heart of the home is an impressive dual-aspect reception room, providing versatile space for both a cosy lounge and a separate TV area, deal for entertaining or relaxing with family. The inviting dining room flows seamlessly into the light-filled, contemporary kitchen, making it perfect for both everyday living and hosting.

Additional ground-floor benefits include a practical cloakroom and a well-planned utility area.

The first floor features two generous double bedrooms, a well-proportioned single bedroom, and a stylish family bathroom complete with a luxurious four-piece suite.

Outside, the property continues to impress with a charming and private courtyard leading to a sun-drenched, low-maintenance garden. Finished with decorative stone and a pleasant patio area, it provides an ideal space to unwind while enjoying picturesque views across the surrounding hills and valley. With its stunning outlook, high-quality finish, and excellent living space, this outstanding home comes highly recommended for internal viewing.





## Accommodation

### Entrance Hall

**Reception Room** - 20' 8" max x 11' 6" max ( 6.30m max x 3.51m max )

**Diner** - 12' 6" x 10' 6" ( 3.81m x 3.20m )

**Kitchen** - 12' 6" x 10' 2" ( 3.81m x 3.10m )

**Utility** - 4' 11" x 4' 1" ( 1.50m x 1.24m )

**W.C.**

### First Floor

#### Landing

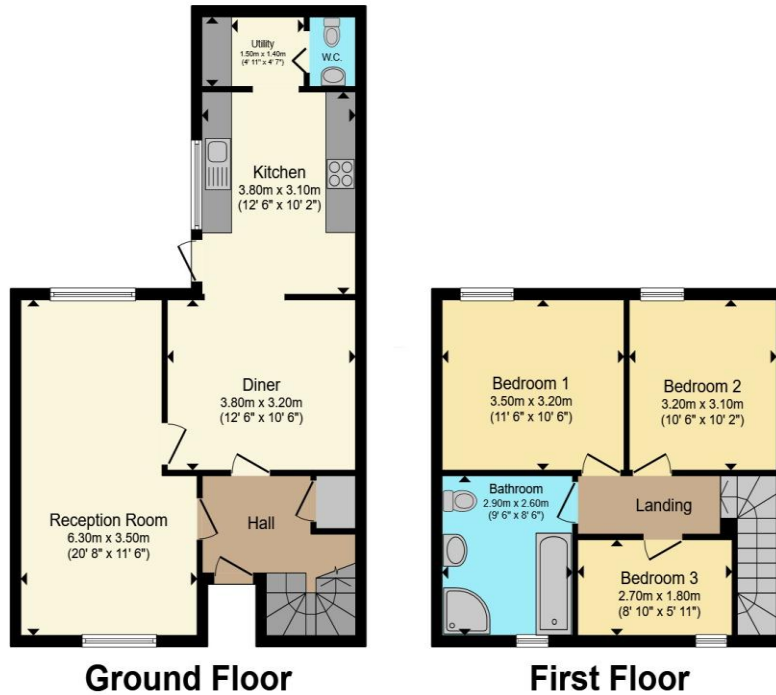
**Bedroom One** - 11' 6" x 10' 6" ( 3.51m x 3.20m )

**Bedroom Two** - 10' 6" x 10' 2" ( 3.20m x 3.10m )

**Bedroom Three** - 8' 10" x 5' 11" ( 2.69m x 1.80m )

#### Bathroom

## Floorplan



Total floor area 99.9 m<sup>2</sup> (1,075 sq.ft.) approx

This floor plan is for illustrative purposes only. It is not drawn to scale. Any measurements, floor areas (including any total floor area), openings and orientation are approximate. No details are guaranteed, they cannot be relied upon for any purpose and they do not form part of any agreement. No liability is taken for any error, omission or misstatement. A party must rely upon its own inspection(s). Powered by [www.propertybox.io](http://www.propertybox.io)

## Important Information

Note while we endeavour to make our sales details accurate and reliable, if there is any point which is of particular interest to you, please contact the office and we will be pleased to confirm the position for you. We have not personally tested any apparatus, equipment, fixtures, fittings or services and cannot verify they are in working order or fit for their purposes. Nothing in these particulars is intended to indicate that carpets or curtains, furnishings or fittings, electrical goods (whether wired or not). Gas fires or light fittings or any other fixtures not expressly included form part of the property offered for sale. This computer generated Floorplan, if applicable, is intended as a general guide to the layout and design of the property. It is not to scale and should not be relied upon for dimensions. Tenure: We cannot confirm the tenure of the property as we have not had access to the legal documents. The buyer is advised to obtain verification from their solicitor or surveyor.