



KENSINGTON GARDENS SQUARE, £800,000

Two bedrooms
Two bathrooms
Communal gardens
Amazing location
Open Plan Kitchen
Period Building

@marshandparsons
marshandparsons.co.uk

MARSH &
PARSONS



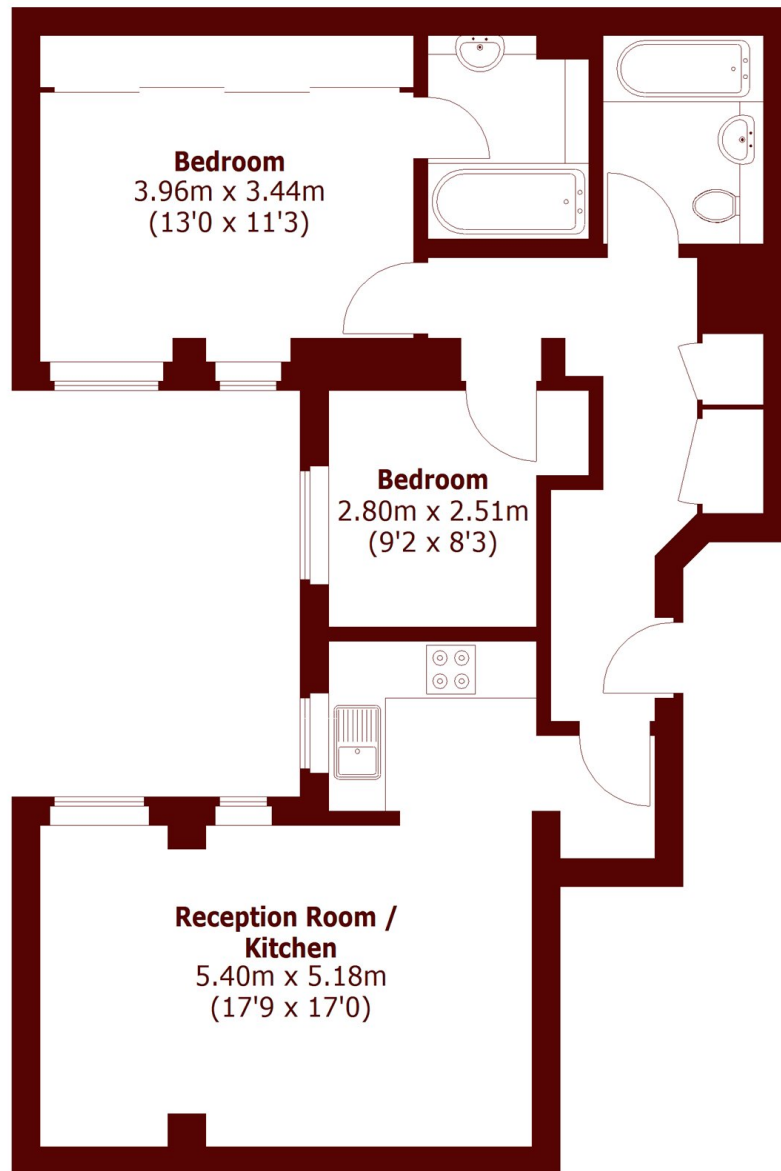
ABOUT THE PROPERTY

A well presented two-bedroom apartment on the ground floor of this handsome period building. The apartment benefits from a spacious master bedroom with an en suite bathroom, a second smaller bedroom and separate bathroom. The property also offers a modern reception room with a fully fitted open-plan kitchen, as well as access to the pretty communal gardens opposite.

Kensington Gardens Square is wonderfully positioned just a short stroll from the fabulous array of fashionable boutique shops, cafes and restaurants on Westbourne Grove, whilst the green open spaces of Hyde Park are just moments away. The central line is easily accessible from the underground at Bayswater which is close by.



STEP INSIDE KENSINGTON GARDENS SQUARE



Raised Ground Floor

Total area (approx.): 63.5 sq. m (683.5 sq. ft)

Notting Hill
020 7313 2890

Energy Rating: C We aim to make our particulars both accurate and reliable. However, they are not guaranteed; nor do they form part of an offer or contract. If you require clarification on any points then please contact us, especially if you're traveling some distance to view. Please note that appliances and heating systems have not been tested and therefore no warranties can be given as to their good working order

MARSH &
PARSONS