



Dalyell Road, SW9

£400,000

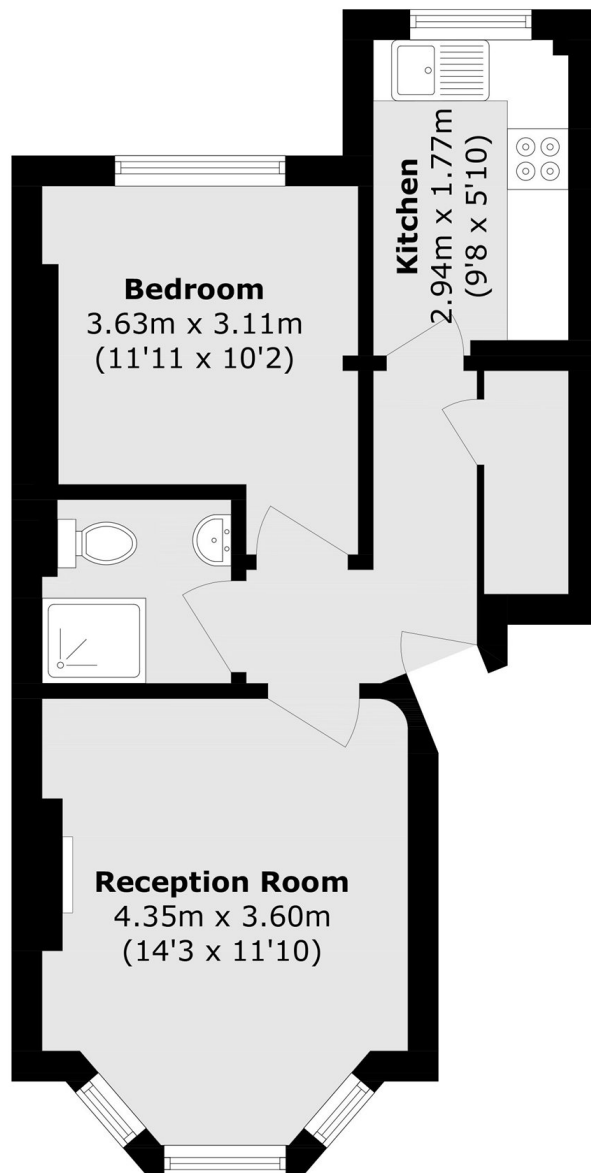
A charming one-bedroom Victorian apartment set on a desirable tree-lined street within the popular Brixton, Stockwell and Clapham triangle. The property combines period character with modern comforts, creating a bright and welcoming home ideal for a range of buyers.

Located on the sought-after Dalyell Road, the apartment enjoys a quiet residential setting with minimal through traffic, while being within easy reach of Brixton, Clapham and Stockwell. Brixton Station (Victoria Line), Clapham High Street (Northern Line and Overground) and Stockwell Station (Northern and Victoria Lines) are all nearby, along with the cafés, restaurants and amenities of Brixton Village, Clapham Old Town and Abbeville Village. The green spaces of Brockwell Park, Slade Gardens and Clapham Common are also within easy reach.

Features

- Chain Free
- Raised Ground Floor
- One Double Bedroom

Dalyell Road,
London, SW9



Total area (approx.): 41.7 sq. m (448.9 sq. ft)

Dexters

Clapham High Street
55 Clapham High Street
London
SW4 7TG
Sales
020 7483 6363

Energy Rating: D. We aim to make our particulars both accurate and reliable. However they are not guaranteed; nor do they form part of an offer or contract. If you require clarification on any points then please contact us, especially if you're traveling some distance to view. Please note that appliances and heating systems have not been tested and therefore no warranties can be given as to their good working order.

 **RICS** | Regulated
Estate Agent
and Letting Agent

dexters.co.uk