



Thomas Tower

Dalston Square, E8

Asking Price £500,000

This exceptional two double bedroom apartment is situated within this highly impressive modern development. The apartment comprises; spacious open plan reception room, master bedroom, second double bedroom and luxury bathroom.

CHESTERTONS



Thomas Tower

Dalston Square, E8

- Two bedrooms
- Two bathrooms
- Concierge
- Close to transport links



This exceptional two double bedroom apartment is situated within this highly impressive modern development. The apartment comprises; spacious open plan reception room, master bedroom, second double bedroom and luxury bathroom. It should be noted that the development benefits from numerous amenities including; on site residents gymnasium, communal roof garden, 24 hour concierge as well as bicycle storage. Burke house is situated in Dalston Square, which is brilliantly located in Dalston, an area full of interesting places to eat and drink, including the authentic Ridley Road market, roof top bars, brasseries and even an independent cinema. Also within walking distance to London Fields. For transport links Dalston Junction and Dalston Kingsland Overground stations are only moments away, taking you into Shoreditch and central London in minutes, with a vast array of buses which are available on Kingsland Road taking you into the City.

Tenure: Leasehold 110 years 1 months

Service Charge: £3260

Ground Rent: £552 The ground rent is to be reviewed every 10 years.

Local Authority: Hackney

Council Tax Band: D

Energy Efficiency Rating		Current	Potential
Very energy efficient - lower running costs	A		
(91-101)	B		
(81-90)	C	79	79
(69-80)	D		
(55-68)	E		
(39-54)	F		
(21-38)	F		
(1-20)	G		
Not energy efficient - higher running costs			
England, Scotland & Wales		EU Directive 2002/91/EC	

Chestertons Islington Sales

327-329 Upper Street

Islington

London

N1 2XQ

islington@chestertons.co.uk

020 7359 9777

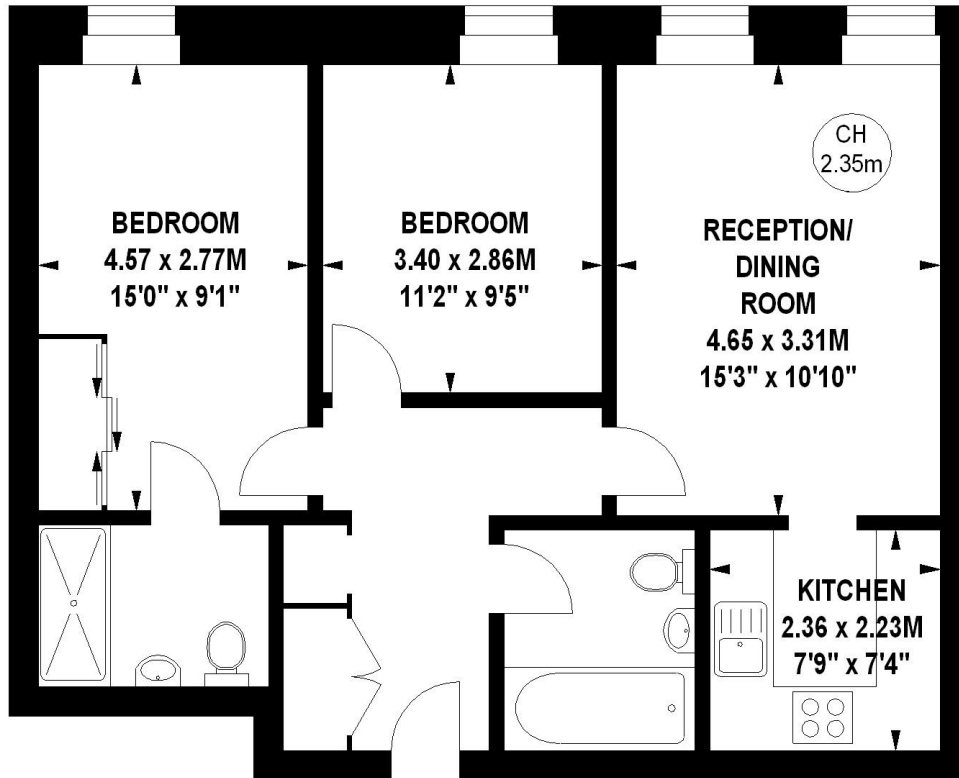
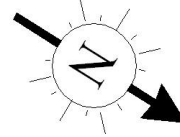
chestertons.co.uk

Thomas Tower, E8

Approximate gross internal area

62.80 sq m / 676 sq ft

Key :
CH - Ceiling Height



Third Floor

The floor plan is not to scale and measurements and areas shown are approximate and therefore should be used for illustrative purposes only. The plan has been prepared in accordance with the RICS code of Measuring Practice and whilst we have confidence in the information produced, it must not be relied on.

If there is any aspect of particular importance, you should carry out or commission your own inspection of the property.

Copyright of FeaturePRO.

