

Trusted since 1802
HENLEY-ON-THAMES | MARLOW | BASINGSTOKE

SIMMONS & SONS



Eliot Drive, Marlow

Mid-Terrace Family Home to the East Side of Marlow

Offers Over £450,000

Freehold

51 Eliot Drive, Marlow, SL7 1TT

- Through lounge/diner with double doors on to the garden
- Downstairs cloakroom
- Fitted kitchen with door to the garden
- Three good-sized bedrooms
- Four-piece family bathroom
- Front and rear gardens
- Within 1 mile level walk of the top of Marlow high street
- Great access to the A404 with easy links to the M4 & M40
- Close proximity to Great Marlow School



Situated on Eliot Drive on the east side of Marlow, this well-presented mid-terrace family home offers a comfortable and convenient lifestyle. This three-bedroom house is an ideal purchase for families or professionals seeking easy access to local amenities and excellent transport links. The accommodation comprises a spacious through lounge/diner featuring double doors that open onto the rear garden, creating a bright and welcoming living space. The fitted kitchen also benefits from direct garden access, enhancing indoor-outdoor flow. Additionally, a downstairs cloakroom provides practical convenience. Upstairs, there are three good-sized bedrooms serviced by a modern four-piece family bathroom, offering ample space for family living. Both front and rear gardens provide outdoor areas for relaxation and recreation. Located within a one-mile level walk of the top of Marlow High Street, the property enjoys proximity to a variety of shops, restaurants, and local services. Commuters will appreciate the excellent access to the A404, with easy links to the M4 and M40 motorways. Furthermore, the property is situated close to Great Marlow School, making it well-suited for families. Overall, this terraced house presents a fantastic opportunity to acquire a comfortable family home in a sought-after location with excellent amenities and transport connections.



Exterior

To the front of the property, it is mainly laid to lawn with a paved path leading to the front door. To the rear of the property, it is low maintenance with an area of artificial grass as well as an extensive decked area and a garden shed all enclosed by wooden fencing and a brick wall at the rear as well as gated access.

Situation

Marlow is a charming and historic town set on the banks of the River Thames, surrounded by the beautiful Chiltern countryside designated as an Area of Outstanding Natural Beauty. Marlow offers a variety of cafes, bars and restaurants and is a perfect place for enjoying the River Thames and shopping with a difference. Many recreational activities are available within the local area and there are excellent schools for children of all ages available in both Marlow and surrounding districts. Marlow station provides access to London Paddington (GWR & Elizabeth Line) and is within easy access of the M4 and M40.



Services

Heating: Gas fired hot water radiators

Water: Mains Supply

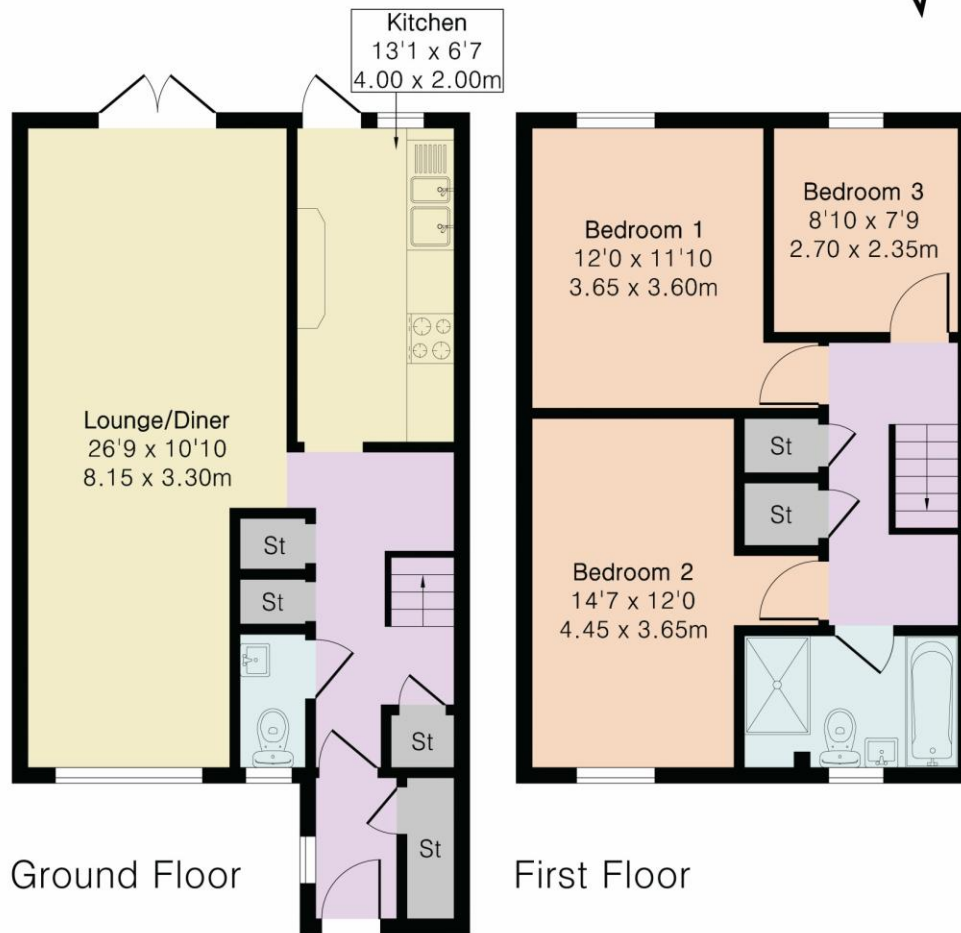
Sewerage: Mains Supply

Broadband: Ask Agent

Approximate Gross Internal Area 989 sq ft - 92 sq m

Ground Floor Area 513 sq ft – 48 sq m

First Floor Area 476 sq ft – 44 sq m



Local Authority - Buckinghamshire Council

Council Tax Band - D

Energy Performance Rating - C74

Score	Energy rating	Current	Potential
92+	A		
81-91	B		
69-80	C	74 C	79 C
55-68	D		
39-54	E		
21-38	F		
1-20	G		

VIEWINGS - Strictly by appointment only with Simmons & Sons - Marlow Sales

T: 01628 484353

E: marlowsales@simmonsandsons.com

W: <http://www.simmonsandsons.com>

Simmons & Sons Surveyors LLP for themselves and for the vendors or lessors of the property whose agents they are give notice that: (i) the particulars are produced in good faith, are set out as a general guide only and do not constitute any part of a contract or offer; (ii) all descriptions, dimensions, references to condition and necessary permissions for use and occupation, and any other details are given in good faith and are believed to be correct, but any intending purchasers or tenants should not rely on them as statements or representations of fact but must satisfy themselves by inspection or otherwise as to the correctness of each of them; (iii) No person in the employment of Simmons & Sons has any authority to make or give any representation or warranty whatsoever in relation to this property.

Sales

Lettings & Management

Commercial

Development

Rural

32 Bell Street
Henley-on-Thames
Oxon
RG9 2BH
T: 01491 571111

1 High Street
Marlow
Bucks
SL7 1AX
T: 01628 484353

12 Wote Street
Basingstoke
Hants
RG21 7NW
T: 01256 327711

Peper Harow
The Estate Office
Godalming
GU8 6BQ
T: 01483 418151

SIMMONS & SONS