



## Kelvedon Road, SW6

### £600,000

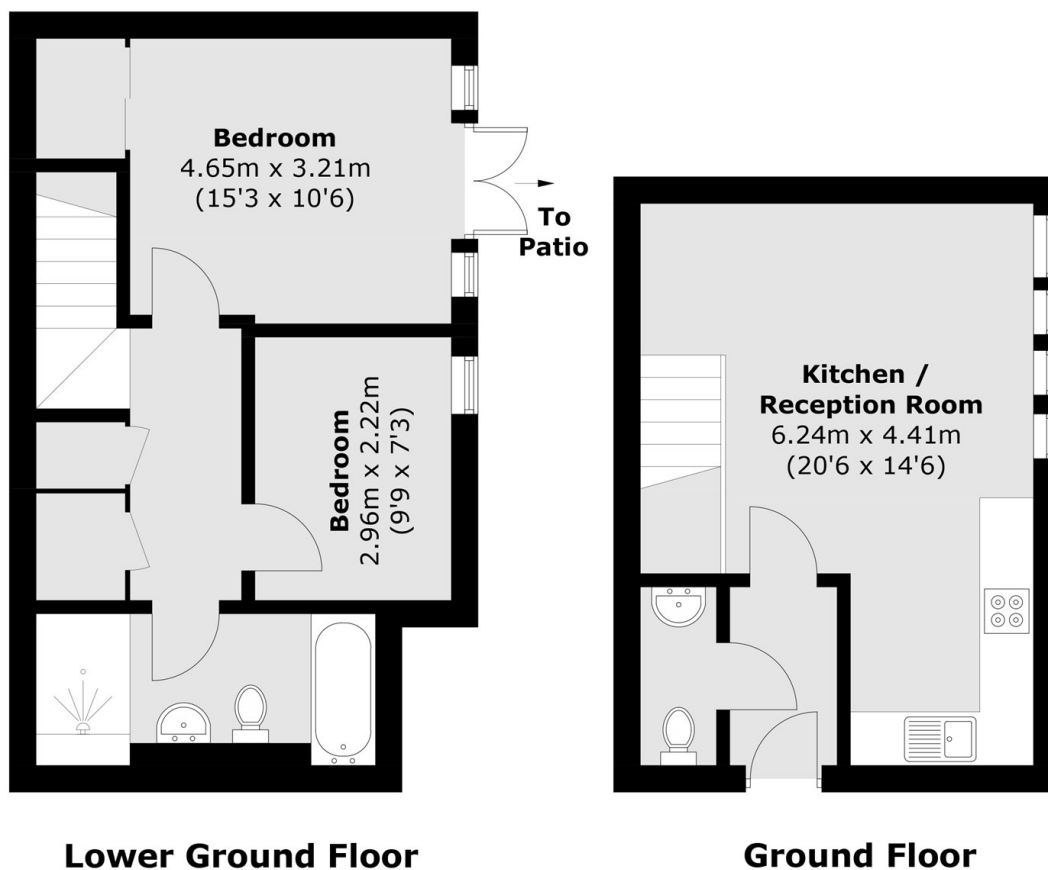
A fantastic opportunity to acquire a stylish split-level, two bedroom apartment. Set within a modern development, the property is arranged over the ground and lower ground floors and benefits from a private patio courtyard. The ground floor features a spacious open-plan kitchen and living area, ideal for modern living, along with a convenient guest W.C.

O'Connors Court is situated on Kelvedon Road, which is located in a prime Fulham, just north of the Fulham Road. It is conveniently located for the restaurants, independent cafes and boutique shops in Parsons Green and the green spaces of both Hurlingham Park and Eel Brook Common are a short walk away.

### Features

- Private Patio Garden
- Two Double Bedrooms
- One Bathroom and WC
- Split Level Apartment
- Sought After Mansion Block
- Sold Chain Free

# Kelvedon Road, London, SW6



Total area (approx.): 64.3 sq. m (692.1 sq. ft)