




 **3**
Bedrooms

 **2**
Bathrooms

 **2**
Receptions



- **ANOTHER FANTASTIC PROPERTY FOR SALE ON THE HIGHLY SOUGHT AFTER NORTON HEIGHTS!**
- **SPACIOUS AND INVITING LIVING ROOM WITH PLENTY OF SPACE**
- **CONTEMPORARY KITCHEN/DINER**
- **CONVENIENT DOWNSTAIRS WC**
- **THREE GOOD SIZED BEDROOMS**
- **MAIN BEDROOM BENEFITTING FROM A PRIVATE EN-SUITE**
- **BATHROOM WITH A BATHTUB PERFECT FOR RELAXING**
- **LARGE ENCLOSED REAR GARDEN WITH PATIO AREA AND LAWN**
- **PAVED DRIVEWAY FOR OFF-ROAD PARKING**



WE ARE THE CHAMPIONS, MY FRIEND... and we've gone and done it again!

Another fantastic home has arrived on the ever-popular **Norton Heights** – and this one truly deserves a place on the winner's podium.

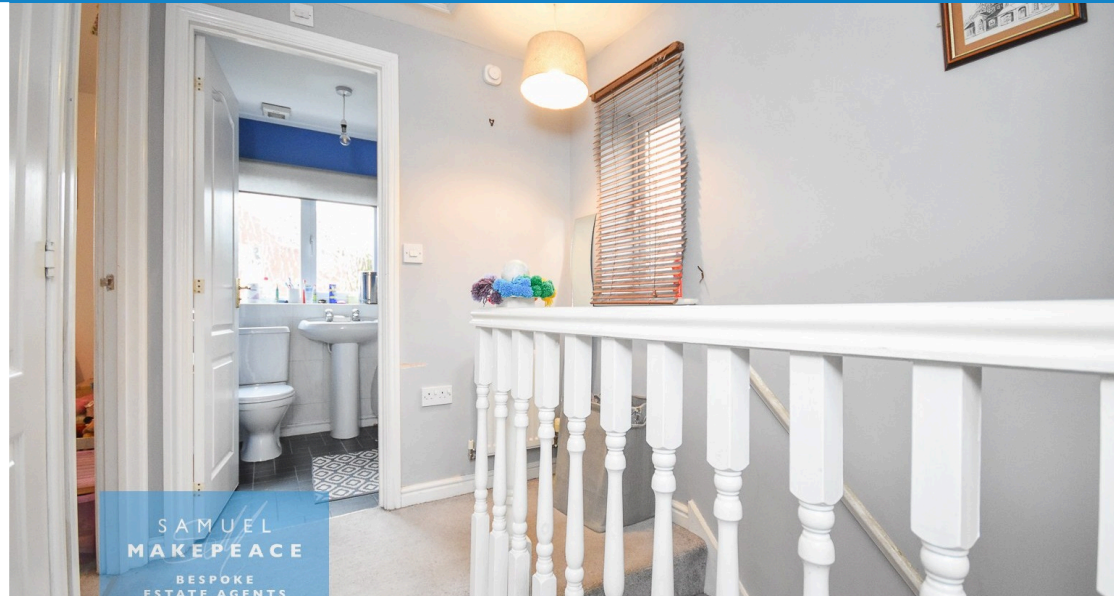
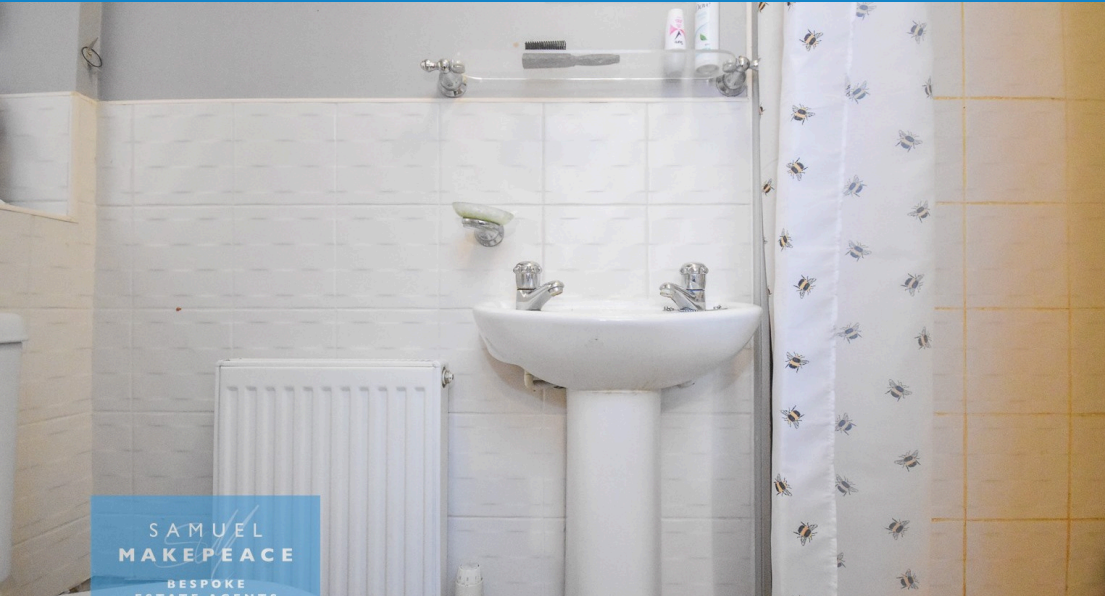
Step inside and you're welcomed by a practical entrance hall. From here, move through into the spacious living room a bright and inviting space with plenty of room for relaxing, entertaining, or simply putting your feet up after a long day. Next up is the **contemporary kitchen/diner**, designed with modern living in mind. Offering ample cupboard storage alongside plenty of storage. Completing the ground floor is a convenient downstairs WC and a useful understairs storage cupboard. Upstairs, you'll discover **three generously sized bedrooms**, ideal for families, guests or even a home office setup. The **main bedroom** benefits from its own **en-suite shower room**, adding that extra touch of comfort and privacy. The bathroom is partially tiled and features a bath tub – perfect for relaxing and unwinding. Externally, the property continues to impress with a large enclosed rear garden, complete with a patio area and lawn – ideal for summer evenings, children at play, or entertaining friends and family. To the front, a paved driveway means parking worries are a thing of the past.

Hyssop Place enjoys an excellent position close to local amenities, while also being within easy reach of the greenway and nearby park – perfect for walks, cycling and outdoor living.

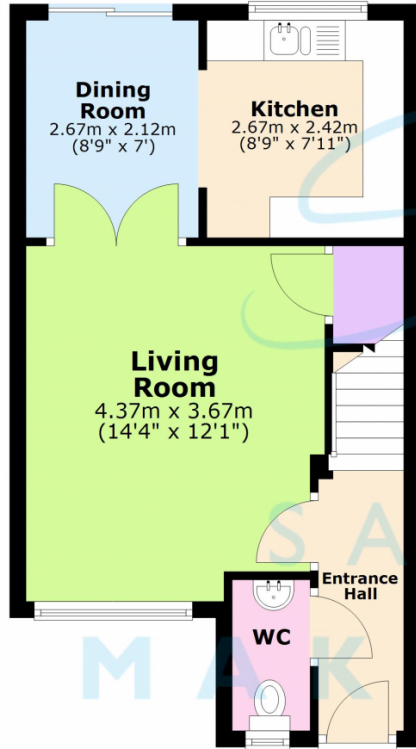
Remember... there's no time for losers — so don't miss out! Call Samuel Makepeace today to arrange your viewing.

Disclaimer:

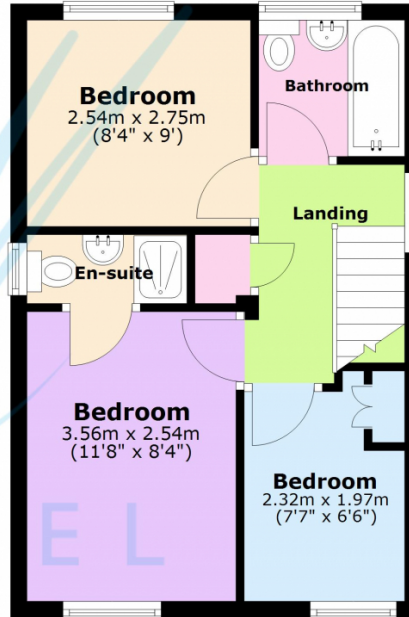
All property particulars are provided in good faith and are believed to be accurate to the best of our knowledge at the time of publication. Samuel Makepeace (Newcastle & Stoke) Ltd t/a Samuel Makepeace Bespoke Estate Agents cannot accept any responsibility for any errors, omissions, or misstatements. Prospective purchasers are advised to verify the details independently and should not rely solely on the information provided when making decisions. These particulars remain the property of Samuel Makepeace Bespoke Estate Agents Stoke on Trent, Newcastle Under Lyme & Alsager.



Ground Floor



First Floor



Total area: approx. 69.3 sq. metres (746.0 sq. feet)

Floorplans are provided as a guide only. All measurements are not to be relied upon. To confirm any measurements and layouts you must check yourself. Samuel Makepeace Bespoke Estate Agents do not accept any liability for the accuracy of this. Plan produced using PlanUp.



Scan me for more info

