



Lakenheath, Brandon, Suffolk, IP27 9AU

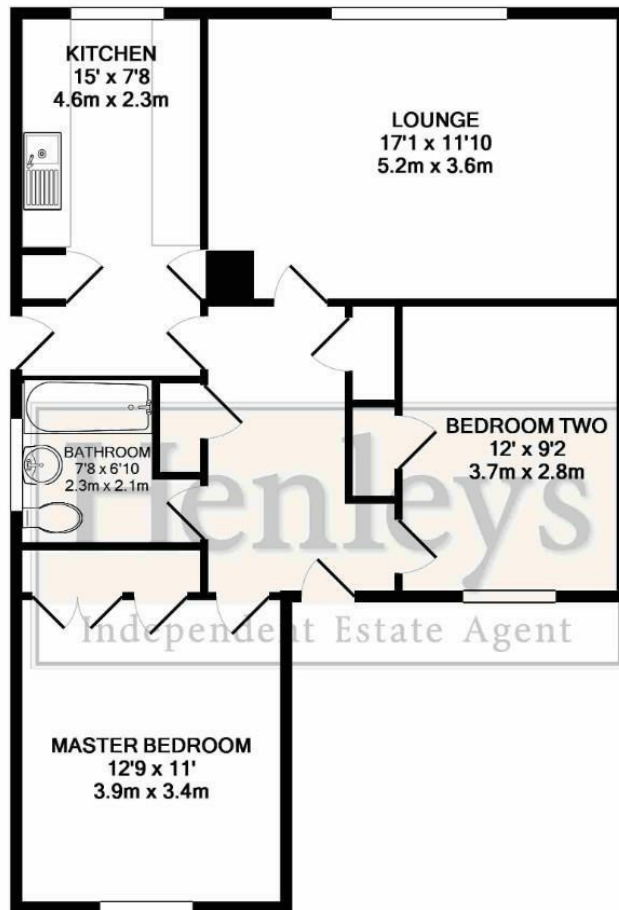
Rent - £1,150 PCM Deposit - £1,326

Detached two bedroom bungalow in the village of Lakenheath. Located on a popular cul - de - sac the property benefits from two spacious bedrooms both with integrated wardrobes, large lounge, fitted kitchen, family bathroom, gardens and garage with driveway parking.

- DETACHED BUNGALOW
- 2 BEDROOMS
- GARAGE & OFF ROAD PARKING
- CLOSE TO BOTH RAF BASES
- OIL HEATING & ENERGY RATING E



Council Tax Band: - EPC Rating: E 45



TOTAL APPROX. FLOOR AREA 727 SQ.FT. (67.5 SQ.M.)

Whilst every attempt has been made to ensure the accuracy of the floor plan contained here, measurements of doors, windows, rooms and any other items are approximate and no responsibility is taken for any error, omission, or mis-statement. This plan is for illustrative purposes only and should be used as such by any prospective purchaser. The services, systems and appliances shown have not been tested and no guarantee as to their operability or efficiency can be given
Made with Metropix ©2019

