



18 Globe House, Chertsey Road, Twickenham, TW1 1LJ

£1500 per calendar month

Unfurnished

Square Footage : 391 sq ft

EPC : Band E

020 8876 2222

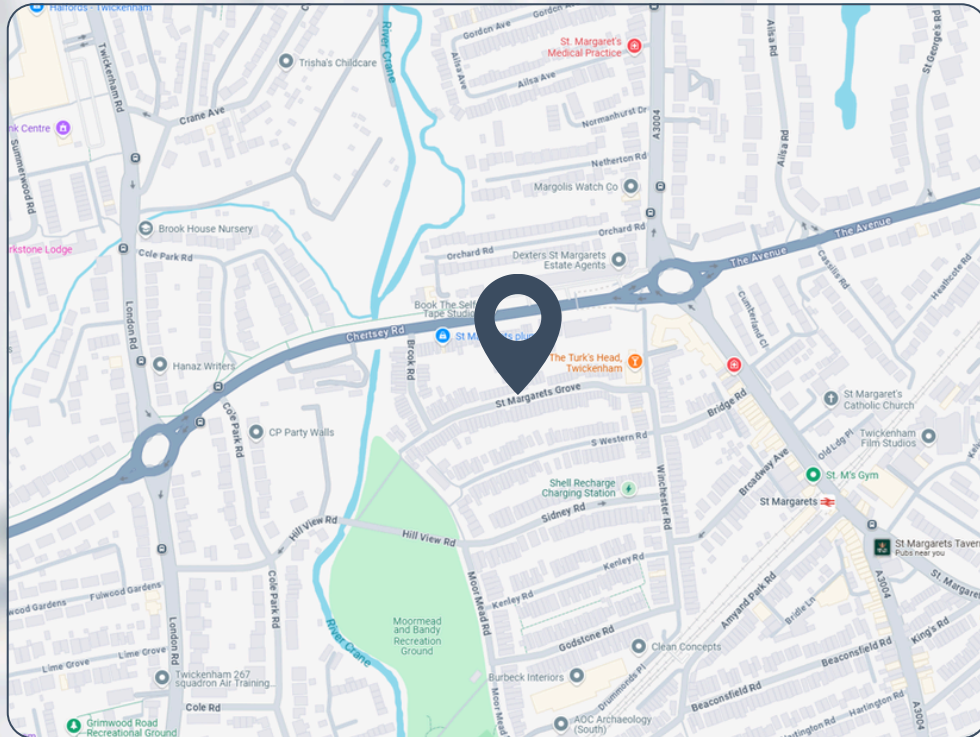
hello@village-properties.co.uk

Location

You'd be hard pressed to find another community like St Margarets and Richmond. It's fun, vibrant and a mix of thoroughly interesting and creative types who love their neighbourhood, reflected in the colourful list of coffee shops, delis, independent retail shops, great pubs and the much-loved Richmond Theatre.

This extraordinary city fringe destination was recently deemed the happiest place in London to live and you can see why. With its exceptional public spaces (such as Richmond Park, Marble Hill and the Thames Path), award winning restaurants, great schools, and a theatre famous for its productions, there is always something to perk up your day. Heathrow is 20 minutes (on a good day) and Gatwick airport is 55 minutes by train from Richmond station. On that point, Richmond station is ideal for the City - 18 minutes into Waterloo and it also has the District Line Tube. For the hard-core sports fan, this is also the capital of Rugby Union, with Twickenham, (England), the Stoop (Harlequins) and the Old Deer Park (London Welsh) all close by as well as Ham Polo Club.

St Margarets is known for its village-like feel, and the local station is just a short walk away, so you can be in central London in under 40 minutes, perfect for a quick commute to work or heading into the city for after-work events. Nearby Richmond and Twickenham stations offer even more options, so whether you're working in the City or enjoying an evening out, the transport connections here are a real perk. Crown Road and St Margarets Road are lined with trendy cafes, independent shops, and great pubs. It's the perfect spot to grab a coffee, meet friends, or discover new places to hang out. Richmond Station offers both a district line service and also mainline trains to Waterloo. The A316 allows fast access to the M3, M25, M4 and beyond.



18 Globe House, Chertsey Road, Twickenham, TW1 1LJ

Summary

- Converted Art Deco 1 bedroom apartment on the 1st floor
- Shower room
- Open plan lounge/kitchen
- Double bedroom
- Built in wardrobes
- Private storage cage ideal for bikes
- Secure development
- Double glazed
- Allocated off-street parking
- Available now
- Council Tax Band C : £2209.87 (2026-2027)
- EPC - E rating
- Internal Floor Area - 391 sq ft

The Property

Converted 1 bedroom flat situated in this beautiful Art Deco building, only a 5 minute walk from St Margarets Station. Situated on the first floor, this apartment is ideal for a single professional - utter paradise. The open plan kitchen-come-living room is plenty big enough for cosy nights in watching your favourite box set, but there's still space to throw a dinner party for a couple of friends, or work from home at the neatly installed desk area. The spacious shower room has plenty of storage and the double bedroom has been cleverly designed with a light well and opaque glass to create a wonderful room which floods the flat with sunshine. Seriously. A dream.

Within 5 minutes walk of St Margarets Village, with its restaurants and shops and there are excellent transport links from St Margaret's Station (London Waterloo approx. 30 mins) or you can take a fabulous stroll over the Richmond Lock footbridge and be in Richmond and its Station within 20 minutes, where you can pick up the District Line Tube. Links to the motorway networks couldn't be easier, the A316 which leads to the M3 and beyond. Allocated off-street parking and a private secure storage 'cage' for all those things you need, but don't want to clog up the flat. Available now. EPC - E rating

Internal Floor Area - 391 sq ft

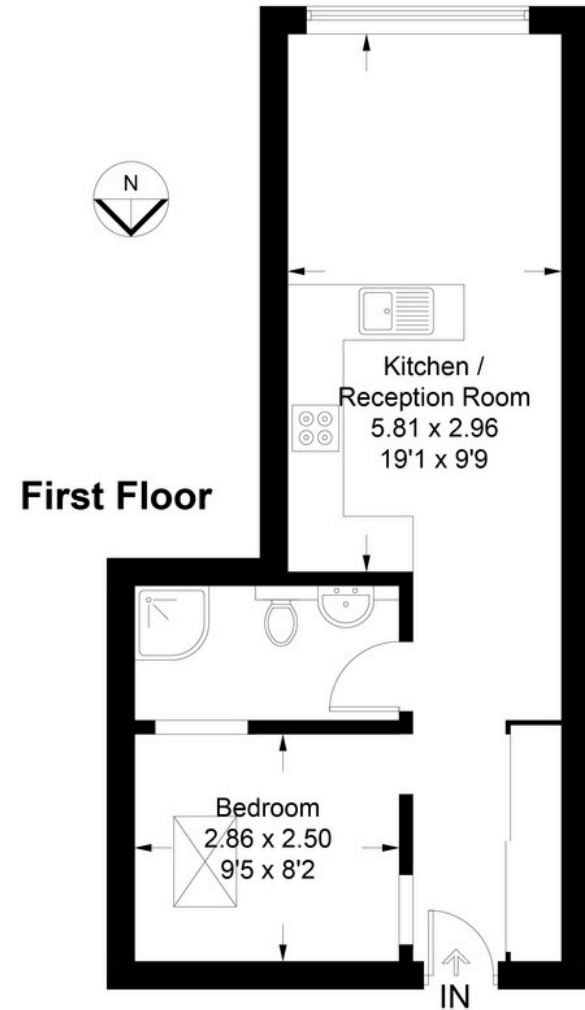
Council Tax Band C : £2209.87 (2026-2027)





Chertsey Road, St. Margaret's, TW1

Approximate Gross Internal Area = 36.3 sq m / 391 sq ft



All measurements are in accordance to the RICS Code Of Measuring Practice.
Measurements are approximate & only for illustrative purposes.
© Property Visual Ltd - info@propertyvisual.com - www.propertyvisual.com - 01580 241 428

Make Yourself at Home

We are fortunate to work in the property market of South West London and Surrey, offering beautiful homes in charming, village-like areas such as St Margarets, Richmond, Barnes, Mortlake, Kew, East Sheen.

With historical buildings, riverside walks, and excellent transport links (tube, rail, bus, and riverboat), these areas blend semi-rural charm with city convenience.

They feature independent shops, restaurants, leisure facilities, theatres, galleries, and museums. Families are drawn here by outstanding schools and the perfect balance of city and country life.

020 8876 2222

hello@village-properties.co.uk

