



## Bridgewater Square, EC2Y

£800,000

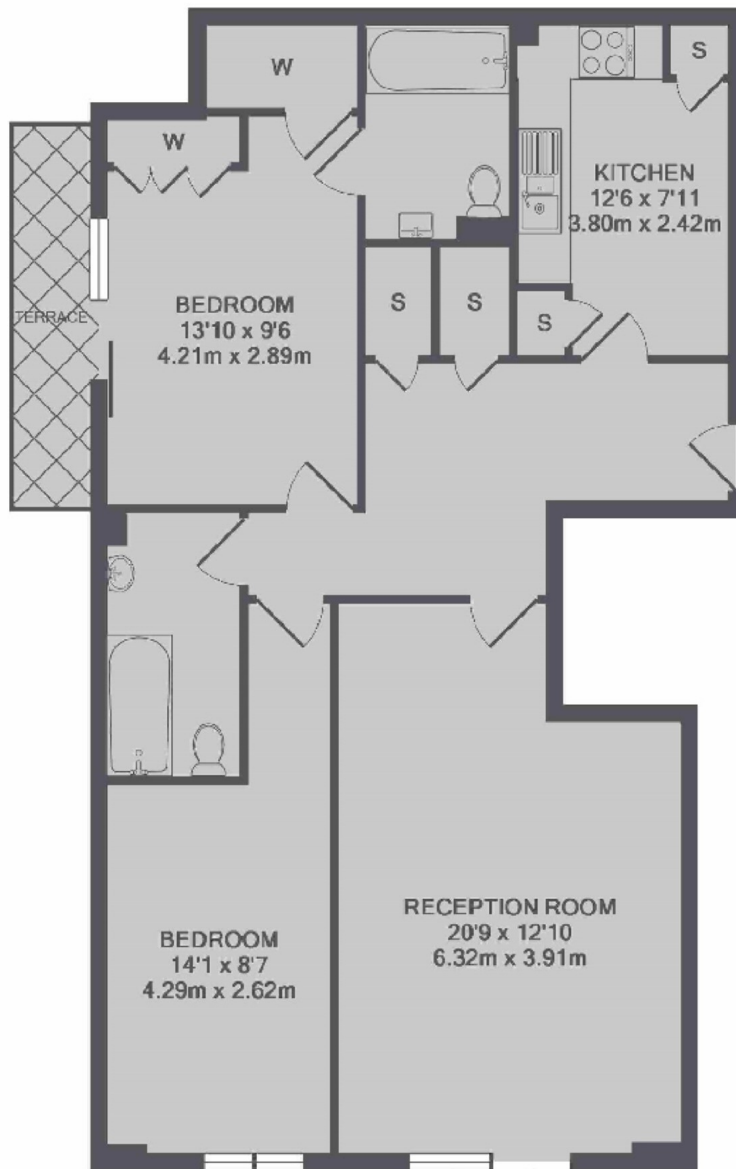
This two double bedroom, two bathroom apartment is located in the Cobalt Building and has a separate kitchen to living room with integrated appliances. The property has wooden flooring throughout, allocated parking space and sold chain free.

Cobalt Building has lift access and a secure entry system. The property is located a quarter mile from Barbican underground station, with easy access to large supermarkets and amenities on Whitecross Street and One New Change shopping centre by St Paul's.

### Features

- Two Double Bedrooms
- Two Bathrooms
- Private Terrace
- Allocated Parking Space
- Chain Free
- Day Time Porter

## Bridgewater Square, London, EC2Y



TOTAL APPROX. FLOOR AREA 907 SQ.FT. (84.2 SQ.M.)

### Contact

To arrange a viewing call our office on the number below or visit our website.



Energy Rating: C. We aim to make our particulars both accurate and reliable. However they are not guaranteed; nor do they form part of an offer or contract. If you require clarification on any points then please contact us, especially if you're traveling some distance to view. Please note that appliances and heating systems have not been tested and therefore no warranties can be given as to their good working order.